



Wynn Marine Ltd

2-4 Merse Road, North Moons Moat, Redditch, Worcestershire B98 9HL, United Kingdom

Tel: +44 (0) 1527 61243, Fax: +44 (0) 1527 66836

Email: customerservice@b-hepworth.com, website www.b-hepworth.co.uk

Installation and Operation Manual

Type C Straight Line Wiper - Inside Motor

Without Control System

Issue 16

WARNING: A suitably qualified person should perform all installation and maintenance. All electrical wiring should be carried out in accordance with relevant regulations. Ensure all products are correctly earthed and all connections are made in accordance with the wiring diagram. Non-compliance may result in damage, malfunction or personal injury. Before commencing any installation or maintenance work, ensure that the electrical supply is disconnected.

Index

Safety Summary	1
Wiper Description	2
Wiper Installation	4
Wiper Installation Drawing	12
Wiper Installation Drawing	14
Wiper Installation Drawing	16
Wiper Installation Drawing Twin	18
Wiper Motor Installation	20
Wiper Motor Installation	21
Parvalux Wiring Diagram	22
Wiper Wiring Diagram	23
Wiper Wiring Diagram	24
Wiper Wiring Diagram	25
Wiper Fault Finding	26
Wiper Maintenance	29
Wiper Inspection and Renewal	31
Wiper Spares List	34
Wiper Spares Drawing	37
Wiper Spares Drawing Twin	38
Wiper Arm	40
Wiper Arm	41
Double Wiper Arm	42
Double Wiper Arm	43
SLW Part Number Calculator	46
Documentation	48

GENERAL INFORMATION AND SAFETY SUMMARY

As we will have no influence on the installation of complete windscreen wiper systems if installation is to be carried out by the customer, we are unable to accept liability for installation errors.

If you require any additional information or any special problems arise which the installation/maintenance instructions do not treat in sufficient detail please contact Customer Service at B. Hepworth and Co Ltd directly.

Safety Precautions

CAUTION! BEWARE OF INJURY!

BEFORE WORKING ON THE WIPER SYSTEM, OBSERVE THE FOLLOWING REMARKS WITHOUT FAIL!

Most wiper motors have a park setting, which permits them to default to the parked position if connected to the vehicle electrical system, even when the wiper is switched off. FOR THIS REASON, AT THIS POINT IN TIME, NEITHER MAY THE WIPER ARM BE MOUNTED, NOR MAY ANY PERSON HAVE HANDS, FINGERS, ETC ANYWHERE NEAR THE WIPER SYSTEM. Even small wiper motors can neither be braked nor stopped by hand.

NEVER REACH INTO THE AREA OF THE DRIVE BELT WHEN THE SYSTEM IS RUNNING!

When putting into service (i.e. when connecting the wiper motor to the vehicle electrical system, even if the wiper switch is in the off position), never leave any loose items such as screwdrivers in the area of the wiper system, as flying objects could lead to injury.

Please ensure the equipment is handled with care. Do not drop or bang the equipment down on a hard surface taking extra care around the area where the motor shaft is situated. Do not hammer the motor shaft when installing the equipment, as this will cause the motor gear plate to deform causing premature failure of the unit.

Wipers should be wrapped in protective material after installation to protect them from damage. Type of material depends on work done in the vicinity, for instance, if welding or grinding work needs to be done near the wipers then a fire resistant blanket should be used. If no welding or grinding work is required near the wipers then bubble is sufficient.

Introduction

The Windscreen Wiper system utilised is detailed on the following pages. The primary components that form the Windscreen Wiper System are the wiper case assembly, the wiper arm assemblies and the wiper blades.

TYPE C WIPER DESCRIPTION AND SPECIFICATION

The 'Type C' is a Heavy Duty Straight Line Wiper with an electric motor mounted internally. The wiper can be mounted either above or below the window.

All electric motors incorporate a worm reduction gearbox. Windings are to Class F insulation.

The DC motor option is suitable for single speed operation. Complies with the EMC Directive according to the following: EN 60945:2002

The AC 1-phase motor option is single speed operation. Complies with the EMC Directive according to the following: EN 60945:2002

The standard AC 3-phase motor option is for either 1 or 2 speed operation. Complies with the EMC Directive according to the following: EN 60945:2002

The variable frequency AC 3-phase motor option is for 3 speed operation and must be used with the 8000 Series Controller. Complies with the EMC Directive according to the following: EN 60945:2002

Motor Specifications

Motor	Type	Nominal Voltage	Full load current at 50/60 Hz	Fusing Value 50/60 Hz	Speed	Compass Safe Distance	Protection Rating
PM3M	Permanent Magnet	24V DC	4.5 A	6.0 A	1.4 m/s	2.4 m	IP54
PM3M (L)	Permanent Magnet	24V DC	4.5 A	6.0 A	0.7 m/s	2.4 m	IP54
PARV65	1 Phase Induction	115 V	2.3/2.6 A	2.5/3.15 A	1.4 m/s	0.5 m	IP20
PARV65L	1 Phase Induction	115 V	1.5/1.6 A	2.5/3.15 A	0.7 m/s	0.5 m	IP20
PARV64-T	1 Phase Induction	230 V	1.2/1.6 A	2.5/3.15 A	1.4 m/s	0.5 m	IP20
PARV64L	1 Phase Induction	230 V	0.75/0.95 A	1.0/1.6 A	0.7 m/s	0.5 m	IP20
PARV61	3 Phase Induction	115V AC	1.3/1.1 A	2.0/1.6 A	0.7/1.4 m/s	0.5 m	IP20
PARV62D+	3 Phase Induction	220V AC	0.6/0.6 A	1.0/1.0 A	0.7/1.4 m/s	0.5 m	IP20
PARV81	3 Phase Induction	115V AC	1.5 A	8000 Controller	0.7/1.1/1.4	0.5 m	IP20
PARV82	3 Phase Induction	220V AC	1.1 A	8000 Controller	0.7/1.1/1.4	0.5 m	IP20

For protection it is recommended that the wiper system have fuses fitted. The fuses will not blow in normal conditions, however if the wiper is jammed, then the fuses are designed to blow before the motor is damaged. Each wiper requires its own fuse. Fuse values shown above.

Compass safe distances, BSH (Germany) certified, have the values shown above. The distance quoted is the maximum figure for 'Magnet-Regelkompass'.

Drive shaft lengths are optional. These are available in standard and gas tight versions. The standard length is 84 mm. Other lengths available are 35mm, 140mm, 200mm and 220mm. The Certificate of Conformity will advise which option has been fitted.

Spray nozzles & water connections

A fresh water supply can be plumbed directly to the wiper into a 6mm overall diameter compression fitting. On stroke lengths below 1015mm, 1 nozzle is fitted, above 1015mm, 2 nozzles are fitted at ¼ stroke + 137mm from either end. The installer needs to provide pressurised water supply and the interconnecting plumbing. When the wash option is installed, the maximum pressure for the system is 8 bar or 118 PSI and the minimum pressure for adequate spray reach is 1 bar or 15 PSI. Example flow rates for a single spray jet are shown below.

Water System Pressure And Flow Rates

Pressure		Flow rate	
Bar	Psi	Litres/min	Gallons/min
1.0	15	0.95	0.20
1.5	22	1.20	0.25
2.0	29	1.40	0.30
3.0	44	1.75	0.40

De-icing Heaters

Optional de-icing heaters may be fitted inside the wiper case to ensure effective operation in cold conditions. Standard cable length is 2M. Optional lengths are 5M, 10M, 15M and 20M. Power consumption is according to the wiper stroke length, shown below.

Heater Power Ratings – Single Wipers

STROKE (mm)	STROKE (inch)	HEATER SIZE	WATTS (24VDC)	STROKE (mm)	STROKE (inch)	HEATER SIZE	WATTS (24VDC)
305 up to 430	12 up to 17	1	97	1500 up to 1800	59 up to 71	8	390 (186)
457 up to 735	18 up to 29	2	135	1930 up to 2100	76 up to 83	10	485 (150)
760 up to 1095	30 up to 42	4	211	2260	89	12	574 (123)
1118 up to 1450	43 up to 57	6	301 (238)				

Quoted Power is for nominal 115 or 230 Volts (bracketed values are for 24 Volts). For stroke lengths up to 1065 mm, power ratings are the same for all voltages.

Heater Power Ratings – Twin Wipers

OVERALL STROKE (mm)	STROKE (inch)	HEATER SIZE	WATTS (24VDC)	OVERALL STROKE (mm)	STROKE (inch)	HEATER SIZE	WATTS (24VDC)
585 up to 685	2 x 12 – 2 x 15	2	135	1855 up to 2165	2 x 37 – 2 x 43	10	485 (150)
735 up to 1042	2 x 16 – 2 x 21	4	211	2210 up to 2565	2 x 44 – 2 x 51	12	574 (123)
1091 up to 1445	2 x 22 – 2 x 29	6	301 (238)	2645 and above	2x 53 – 2 x 89	14	663 (106)
1495 up to 1805	2 x 30 – 2 x 36	8	390 (186)				

Quoted Power is for nominal 115 or 230 Volts (bracketed values are for 24 Volts). For stroke lengths up to 1041 mm, power ratings are the same for all voltages.

TYPE C WIPER INSTALLATION

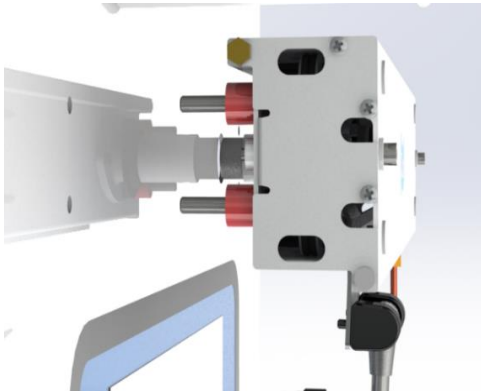


CAUTION: Ensure that the correct wiper, blade and arms are selected for each window.

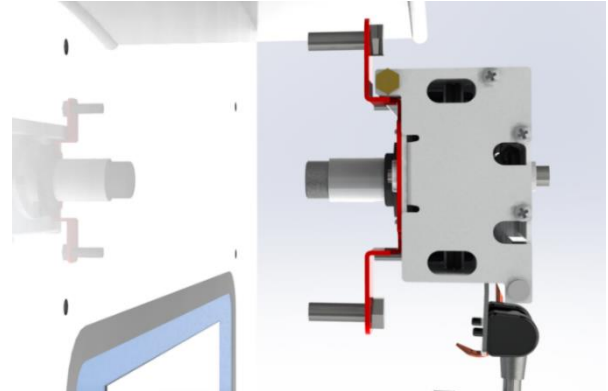
CAUTION: Before drilling, ensure that there are no obstructions / hazards at the chosen mounting position. The main frame should be mounted on a flat surface that will not bend or twist the casing, as this will prevent correct operation of the wiper.

CAUTION: Where more than one wiper unit is to be mounted close together, allow a distance of 70mm minimum between the wiper units.

Stud or Bracket Mounting



Stud Mounting



Bracket Mounting

1. Locate the self-adhesive template in the correct mounting position on the outside of bulkhead (stud mounting only).

NOTE: For motors mounted at the opposite end, the template should be inverted.

2. Drill the wiper 2 off fixing holes (11 mm diameter) and the drive shaft housing hole (57mm diameter).
3. Detach the front cover from main unit. Hold the back casing in the required position and mark-out the remaining fixing holes, or calculate their position from the drawing i.e. stroke length plus 266 mm.
4. Drill the remaining wiper fixing & cable holes for the heater and park sensor, ensuring that all holes are circular and carefully de-burred. Treat bare metal to prevent corrosion.
5. Fit the wiper case into position and secure with M10 bolts. Ensure that the bolts are sealed where they pass through the bulkhead.
6. Push the drive shaft seals into place. It is advisable to use a suitable sealant to prevent water ingress.
7. Using the supplied M6 x 10mm screws, secure the wiper arm to the carriage plate.

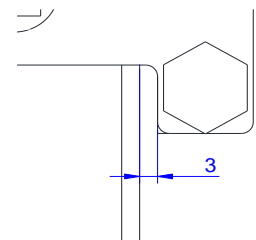


CAUTION: Ensure the correct length screws are used, as supplied. Longer screws will cause the carriage assembly to jam.

8. Bolt the front cover to the back case using the 2 off M8 bolts fitted.



CAUTION: Do not overtighten the cover bolts. There should be 3mm clearance between arm mounting plate and inside of wiper cover.



9. If necessary, slacken the screws on the wiper blade attachment clip, move the blade up or down for optimum position and then retighten screws.
10. Move the wiper arm/blade assembly over its full stroke and check that there is no restriction to movement (the motor will offer some resistance, but should not jam the wiper). Investigate and rectify any restrictions. If necessary adjust the wiper blade up or down on the arm to avoid the window frame.
11. Pass the cables through the bulkhead, leaving sufficient spare cable to allow the front cover to be lifted away from the rear case during the maintenance period. Ensure the wiper is correctly earthed.

NOTE: If a heater is fitted pass the heater cable through the bulkhead, leaving a loop as required, and seal.

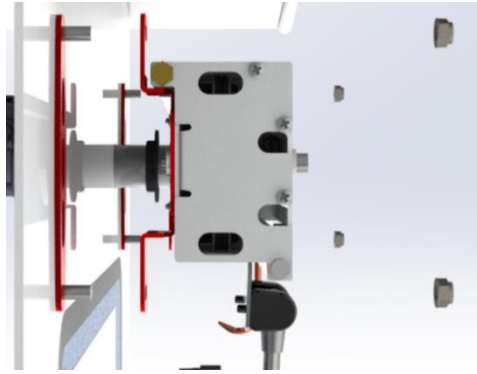
12. Ensure that wherever the cable passes through the bulkhead a suitable cable gland or seal is used to prevent water ingress and cable chaffing.
13. Put a small amount of grease on drive shaft body.



14. Slide motor onto the drive shaft making sure the drive gear on the motor fully engages with drive gear on drive shaft.



Universal Carrier & Bracket Mounting



Universal Bracket Mounting

1. Carefully mark the position of the drive shaft housing hole and 2 (3 for longer wipers) universal carrier plates.
2. Drill the drive shaft housing hole (57mm diameter).
3. Prepare the bulkhead and universal carrier plates carefully and weld the 2 (or 3 for longer wipers) universal mounting brackets into position. Treat bare metal to prevent corrosion.
4. Drill the remaining wiper fixing & cable holes for the heater and park sensor, ensuring that all holes are circular and carefully de-burred. Treat bare metal to prevent corrosion.
5. Fit the wiper case into position on the Universal Carrier studs and secure with supplied M10 spring washers, M10 flat washers and M10 nuts.
6. Push the drive shaft seals into place. It is advisable to use a suitable sealant to prevent water ingress.
7. Using the supplied M6 x 10mm screws, secure the wiper arm to the carriage plate.

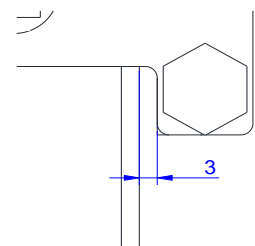


CAUTION: Ensure the correct length screws are used, as supplied. Longer screws will cause the carriage assembly to jam.

8. Bolt the front cover to the back case using the 2 off M8 bolts fitted.



CAUTION: Do not overtighten the cover bolts. There should be 3mm clearance between arm mounting plate and inside of wiper cover.



9. If necessary, slacken the screws on the wiper blade attachment clip, move the blade up or down for optimum position and then retighten screws.
10. Move the wiper arm/blade assembly over its full stroke and check that there is no restriction to movement (the motor will offer some resistance, but should not jam the wiper). Investigate and rectify any restrictions. If necessary adjust the wiper blade up or down on the arm to avoid the window frame.
11. Pass the cables through the bulkhead, leaving sufficient spare cable to allow the front assembly to be lifted away from the rear case during the maintenance period. Ensure the wiper is correctly earthed.

NOTE: If a heater is fitted pass the heater cable through the bulkhead, leaving a loop as required, and seal.

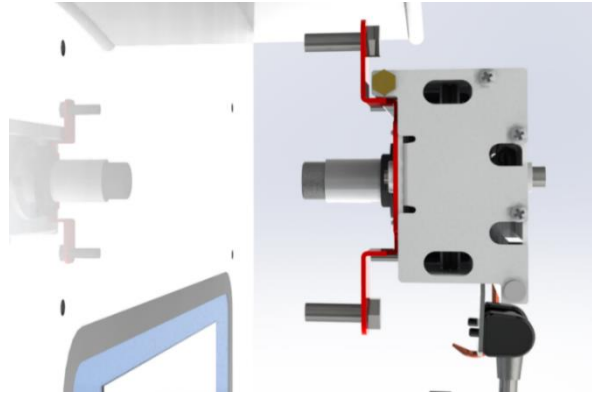
12. Ensure that wherever the cable passes through the bulkhead a suitable cable gland or seal is used to prevent water ingress and cable chaffing.
13. Put a small amount of grease on drive shaft body.



14. Slide motor onto the drive shaft making sure the drive gear on the motor fully engages with drive gear on drive shaft.

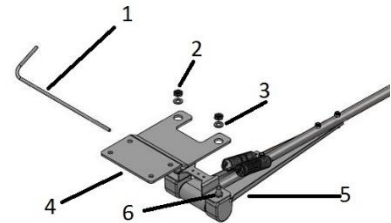


Bracket Mounting – Quick Release Arms



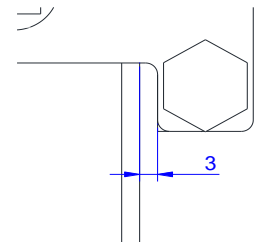
Bracket Mounting

1. Mark out and drill the 4 (6 for longer wiper units) off fixing holes (11 mm diameter) and the drive shaft housing hole (57mm diameter).
2. Mark out and drill the cable holes for the for the heater and park sensor, ensuring that all holes are circular and carefully de-burred. Treat bare metal to prevent corrosion.
3. The wiper unit should be supplied with the arm mounting plate (4) already fitted. If it is not fitted, remove 2 x ¼ UNF Thin Nuts (2) and 2 x M6 washers (3) from the pivot block threads and remove the wiper arm sub assembly (5) from the arm mounting plate (4). Fit the arm mounting plate (4) to the wiper unit before installing the wiper unit using the supplied M6 x 10mm screws.



CAUTION: Ensure the correct length screws are used, as supplied. Longer screws will cause the carriage assembly to jam.

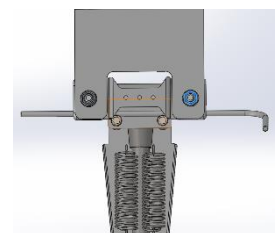
4. Fit the wiper blade to the wiper arm sub assembly (5), ensuring that the captive end of the wiper blade is at the top.
5. Bolt the front cover to the back case using the 2 off M8 bolts fitted.



CAUTION: Do not overtighten the cover bolts. There should be 3mm clearance between arm mounting plate and inside of wiper cover.

6. Fit the wiper case into position and secure with M10 bolts. Ensure that the bolts are sealed where they pass through the bulkhead.
7. Push the drive shaft seals into place. It is advisable to use a suitable sealant to prevent water ingress.
8. Fit the wiper arm sub assembly (5) to the arm mounting plate (4) ensuring that the wiper arm sub assembly pivot block nuts (6) sit inside the holes in the arm mounting plate (4). Refit the 2 x M6 washers (3) and 2 x ¼ UNF Thin Nuts (2) to the pivot block threads and tighten.

9. Gently lift the wiper arm away from the window and remove the spring retaining pin (1). Keep safe for future use.



10. Pass the cables through the bulkhead, leaving sufficient spare cable to allow the front cover to be lifted away from the rear case during the maintenance period. Ensure the wiper is correctly earthed.

NOTE: If a heater is fitted pass the heater cable through the bulkhead, leaving a loop as required, and seal.

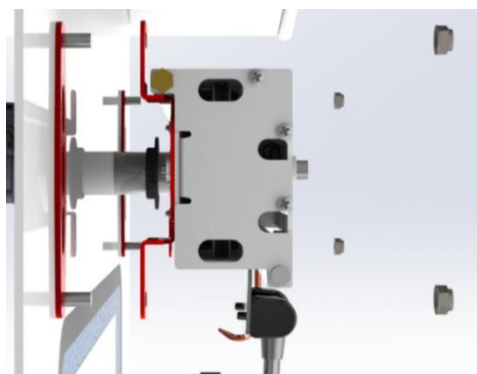
11. Ensure that wherever the cable passes through the bulkhead a suitable cable gland or seal is used to prevent water ingress and cable chaffing.
12. Put a small amount of grease on drive shaft body.



13. Slide motor onto the drive shaft making sure the drive gear on the motor fully engages with drive gear on drive shaft.



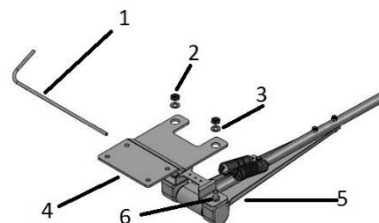
Universal Carrier & Bracket Mounting – Quick Release Arms



Universal Bracket Mounting

1. Carefully mark the position of the drive shaft housing hole and 2 (3 for longer wipers) universal carrier plates.
2. Drill the drive shaft housing hole (57mm diameter).
3. Prepare the bulkhead and universal carrier plates carefully and weld the 2 (or 3 for longer wipers) universal mounting brackets into position. Treat bare metal to prevent corrosion.
4. Mark out and drill the cable holes for the heater and park sensor, ensuring that all holes are circular and carefully de-burred. Treat bare metal to prevent corrosion.

5. The wiper unit should be supplied with the arm mounting plate (4) already fitted. If it is not fitted, remove 2 x ¼ UNF Thin Nuts (2) and 2 x M6 washers (3) from the pivot block threads and remove the wiper arm sub assembly (5) from the arm mounting plate (4). Fit the arm mounting plate (4) to the wiper unit before installing the wiper unit using the supplied M6 x 10mm screws.



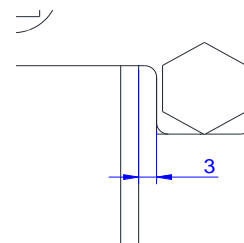
CAUTION: Ensure the correct length screws are used, as supplied. Longer screws will cause the carriage assembly to jam.

6. Fit the wiper blade to the wiper arm sub assembly (5), ensuring that the captive end of the wiper blade is at the top.
7. Bolt the front cover to the back case using the 2 off M8 bolts fitted.

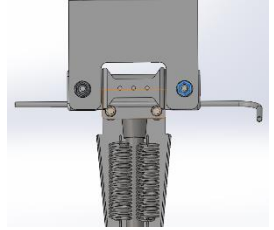


CAUTION: Do not overtighten the cover bolts. There should be 3mm clearance between arm mounting plate and inside of wiper cover.

8. Fit the wiper case into position on the Universal Carrier studs and secure with supplied M10 spring washers, M10 flat washers and M10 nuts.
9. Push the drive shaft seals into place. It is advisable to use a suitable sealant to prevent water ingress.



- Fit the wiper arm sub assembly (5) to the arm mounting plate (4) ensuring that the wiper arm sub assembly pivot block nuts (6) sit inside the holes in the arm mounting plate (4). Refit the 2 x M6 washers (3) and 2 x ¼ UNF Thin Nuts (2) to the pivot block threads and tighten.



- Gently lift the wiper arm away from the window and remove the spring retaining pin (1). Keep safe for future use.
- Pass the cables through the bulkhead, leaving sufficient spare cable to allow the front cover to be lifted away from the rear case during the maintenance period. Ensure the wiper is correctly earthed.

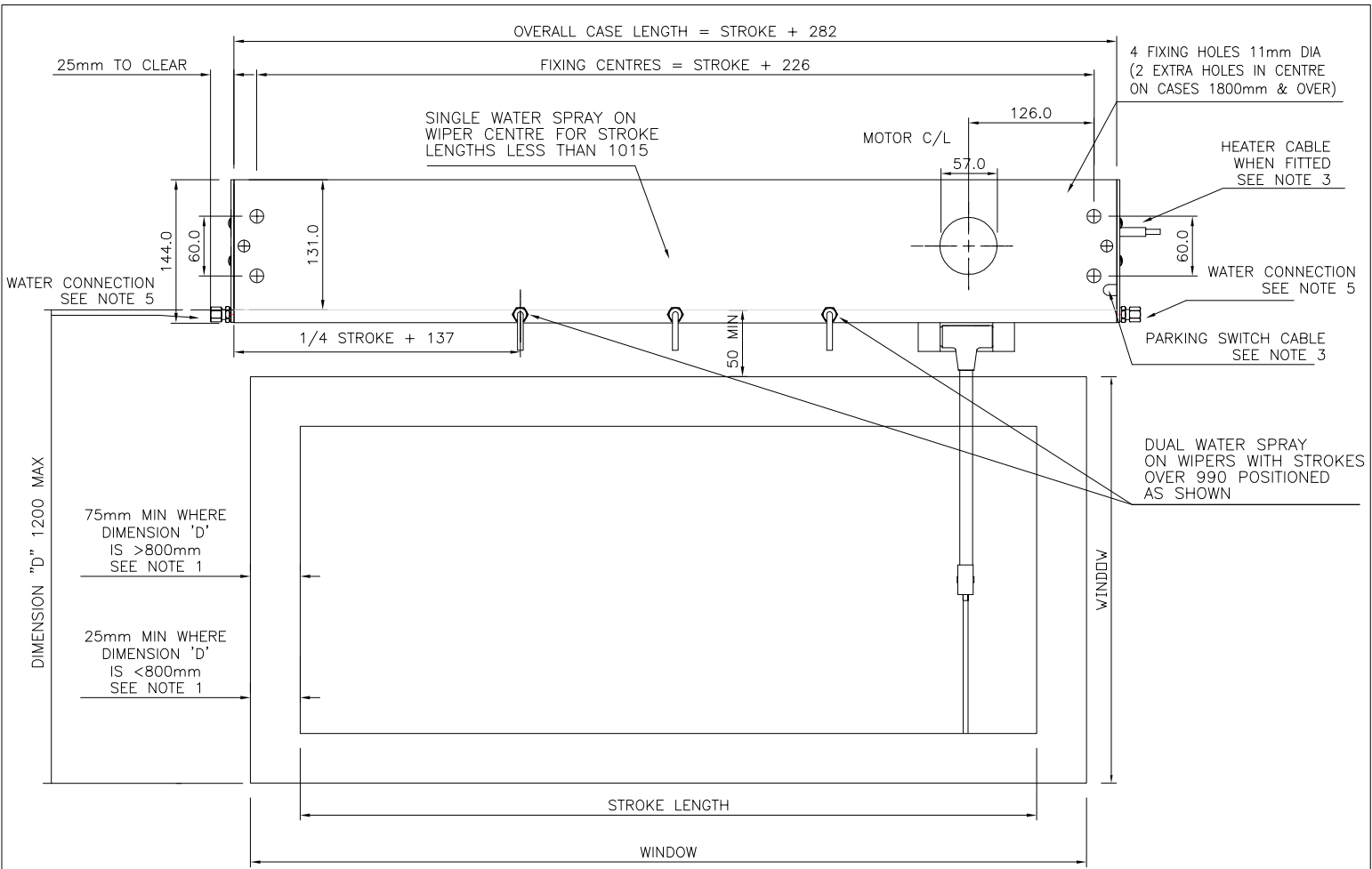
NOTE: If a heater is fitted pass the heater cable through the bulkhead, leaving a loop as required, and seal.

- Ensure that wherever the cable passes through the bulkhead a suitable cable gland or seal is used to prevent water ingress and cable chaffing.
- Put a small amount of grease on drive shaft body.



- Slide motor onto the drive shaft making sure the drive gear on the motor fully engages with drive gear on drive shaft.

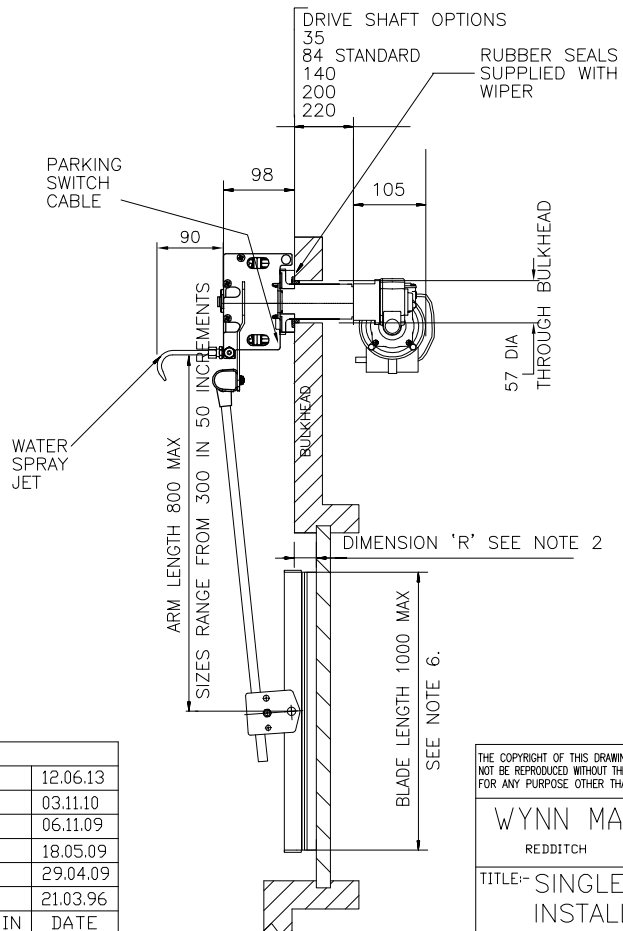




NOTES

1. THESE MINIMUM DIMENSIONS ARE LIMITED BY THE SIZE OF THE CORNER RADII ON THE WINDOW.
2. THE BLADE ARM MAY BE CRANKED WHERE DIMENSION "R" IS GREATER THAN 75.
3. OPTIONAL HEATER AND PARKING SWITCH STANDARD CABLE LENGTH 2 METRES. PARKING SWITCH POSITIONED AT MOTOR END WHEN FITTED.
4. THE HEATER AND PARK SWITCH CABLING TO RUN THROUGH THE BULKHEAD.
5. THE WATER CONNECTION BLANKING PLUG CAN BE FITTED AT EITHER END.
6. RIGID WIPER BLADE LENGTHS RANGE FROM 300 TO 800 AND ARTICULATED WIPER BLADE LENGTHS RANGE FROM 500 TO 1000 BOTH IN 50 INCREMENTS.
7. SEE MANUAL HEATER POWER RATINGS TABLE FOR STROKE OPTIONS AND HEATER DETAILS.
8. THE MOTOR CAN BE POSITIONED RADIALLY THROUGH 360 DEGREES AROUND THE DRIVE SHAFT CENTRE-LINE TO SUIT THE INSTALLATION. ENSURE THAT THE ACCESS SPACE AROUND THE MOTOR SHOWN ON THE DRAWING IS MAINTAINED.

ALL DIMENSIONS IN MM FOR REFERENCE ONLY



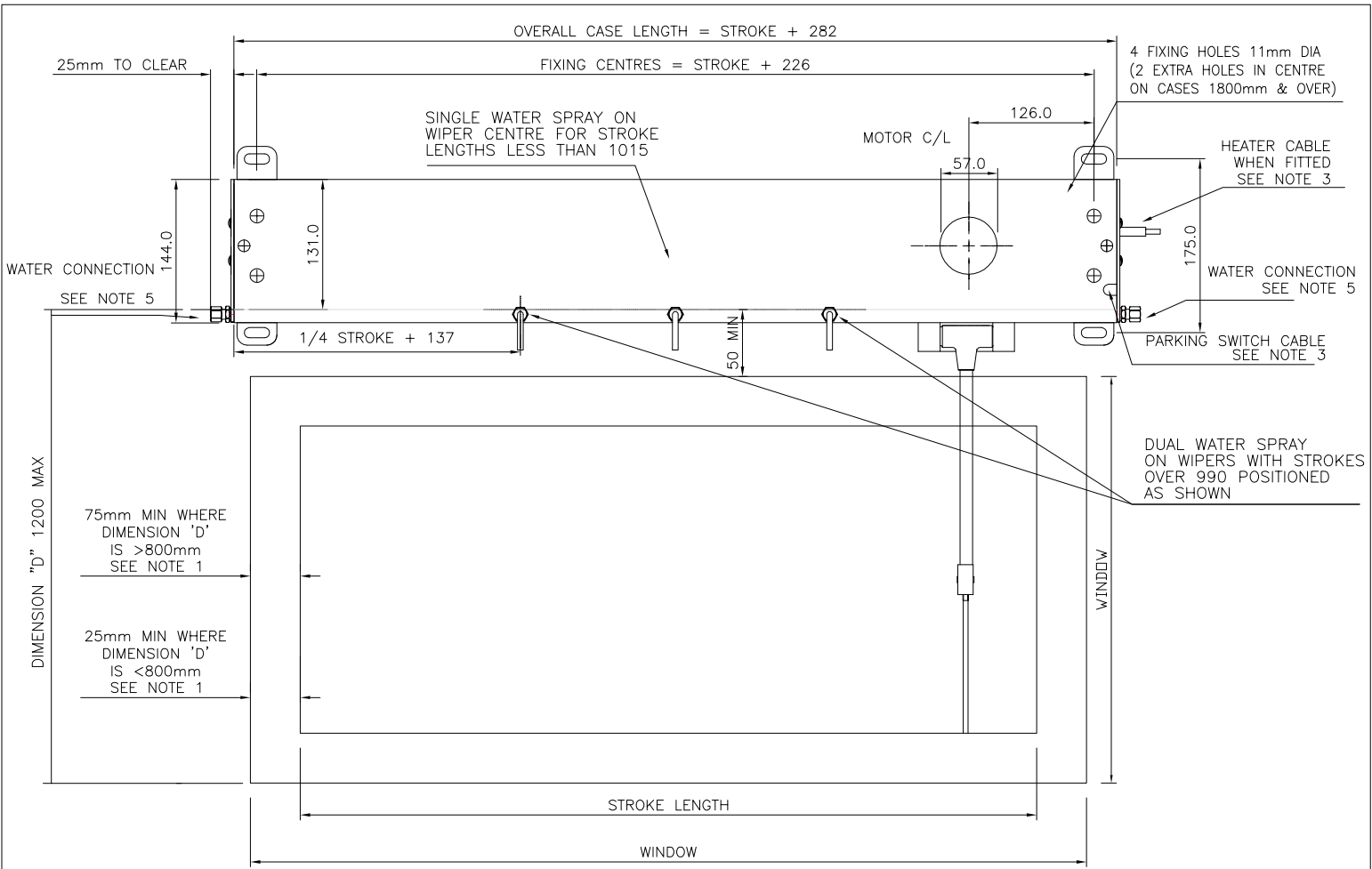
CAD FILENAME+DIRECTORY		M:\DRAW\1588\1588-01-CCOVER					
3rd ANGLE PRO.						6	12.06.13
						5	03.11.10
						4	06.11.09
			9		25.10.18	3	18.05.09
			8		19.01.16	2	29.04.09
			7		25.11.13	1	21.03.96
MAT'L:-	ISS. DIN	DATE	ISS. DIN	DATE	ISS. DIN	DATE	
FINISH:-	SCALE:- NTS	DRAWN:- DD	CHKD:-	CHANGED:-			

THE COPYRIGHT OF THIS DRAWING IS VESTED IN WYNN MARINE LTD. AND MUST NOT BE REPRODUCED WITHOUT THE WRITTEN PERMISSION OF THE COMPANY OR USED FOR ANY PURPOSE OTHER THAN THAT FOR WHICH IT HAS BEEN SUPPLIED.

WYNN MARINE LIMITED
 REDDITCH ENGLAND

TITLE:- SINGLE TYPE C
 INSTALLATION DRG.

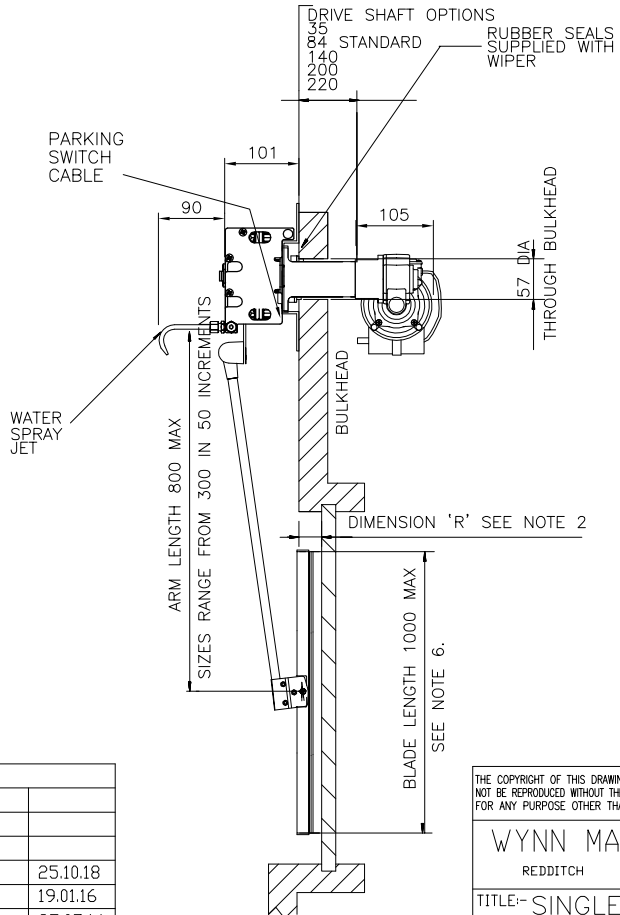
DRAWING No. 1588-01-CCOVER



NOTES

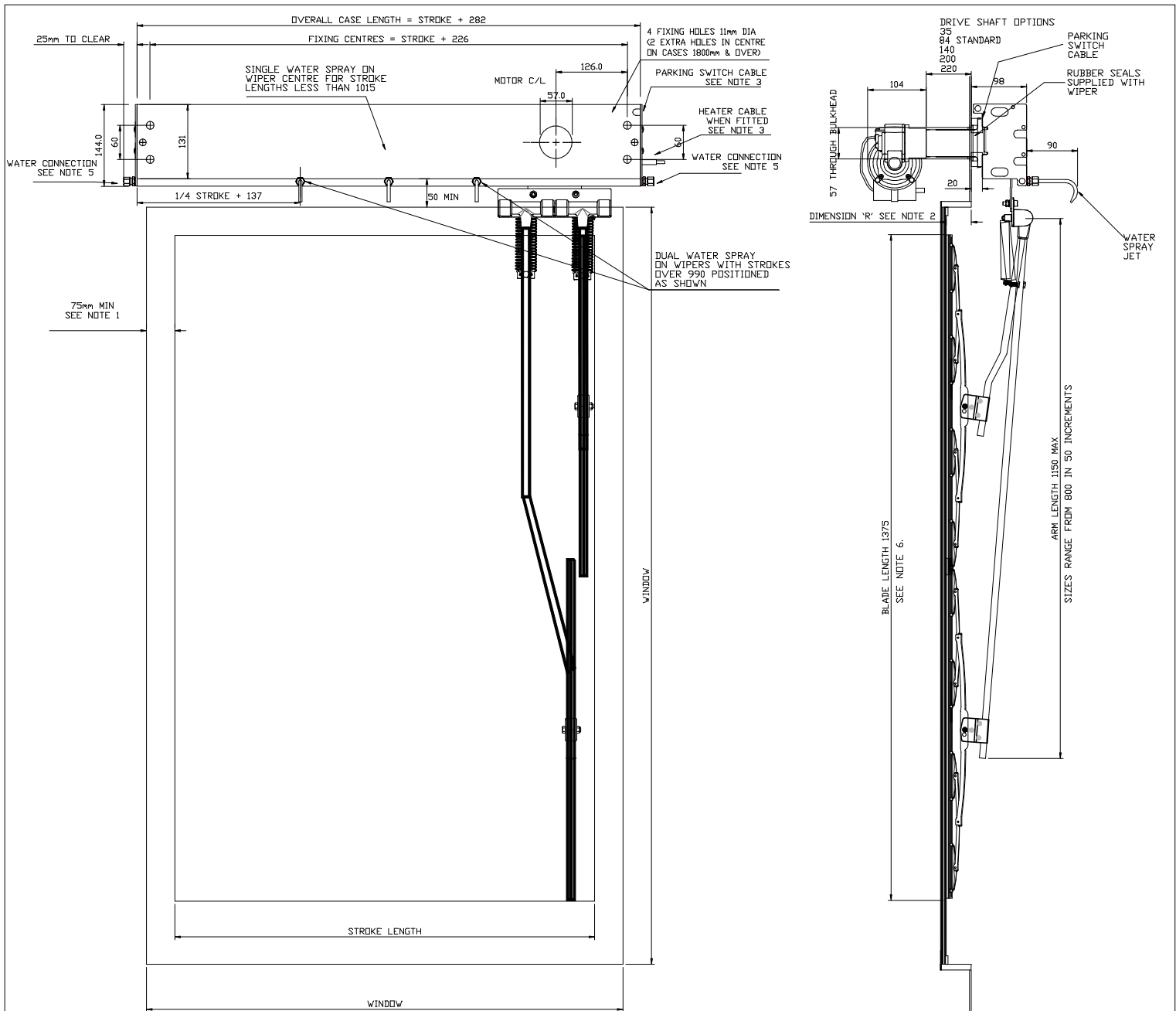
1. THESE MINIMUM DIMENSIONS ARE LIMITED BY THE SIZE OF THE CORNER RADII ON THE WINDOW.
2. THE BLADE ARM MAY BE CRANKED WHERE DIMENSION "R" IS GREATER THAN 75.
3. OPTIONAL HEATER AND PARKING SWITCH STANDARD CABLE LENGTH 2 METRES. PARKING SWITCH POSITIONED AT MOTOR END WHEN FITTED.
4. THE HEATER AND PARK SWITCH CABLING TO RUN THROUGH THE BULKHEAD.
5. THE WATER CONNECTION BLANKING PLUG CAN BE FITTED AT EITHER END.
6. RIGID WIPER BLADE LENGTHS RANGE FROM 300 TO 800 AND ARTICULATED WIPER BLADE LENGTHS RANGE FROM 500 TO 1000 BOTH IN 50 INCREMENTS.
7. SEE MANUAL HEATER POWER RATINGS TABLE FOR STROKE OPTIONS AND HEATER DETAILS.
8. THE MOTOR CAN BE POSITIONED RADially THROUGH 360 DEGREES AROUND THE DRIVE SHAFT CENTRE-LINE TO SUIT THE INSTALLATION. ENSURE THAT THE ACCESS SPACE AROUND THE MOTOR SHOWN ON THE DRAWING IS MAINTAINED.

ALL DIMENSIONS IN MM FOR REFERENCE ONLY



CAD FILENAME+DIRECTORY	M:\DRAW\1588\1588-01-BKT								
3rd ANGLE PRO.									
TOLERANCES UNLESS OTHERWISE STATED									
DECIMAL DIMS. TO 2 PLACES ± 0.1mm				3	25.10.18				
NO DECIMAL PLACES ± 0.25mm				2	19.01.16				
ANGLES ± 1°				1	25.07.14				
MAT'L:-	ISS.	DIN	DATE	ISS.	DIN	DATE	ISS.	DIN	DATE
FINISH:-	SCALE:-	NTS	DRAWN:-	DD	CHKD:-	CHANGED:-			

THE COPYRIGHT OF THIS DRAWING IS VESTED IN WYNN MARINE LTD. AND MUST NOT BE REPRODUCED WITHOUT THE WRITTEN PERMISSION OF THE COMPANY OR USED FOR ANY PURPOSE OTHER THAN THAT FOR WHICH IT HAS BEEN SUPPLIED.	
WYNN MARINE LIMITED	
REDDITCH	ENGLAND
TITLE:- SINGLE TYPE C INSTALLATION DRG.	
DRAWING No. 1588-01-BKT	



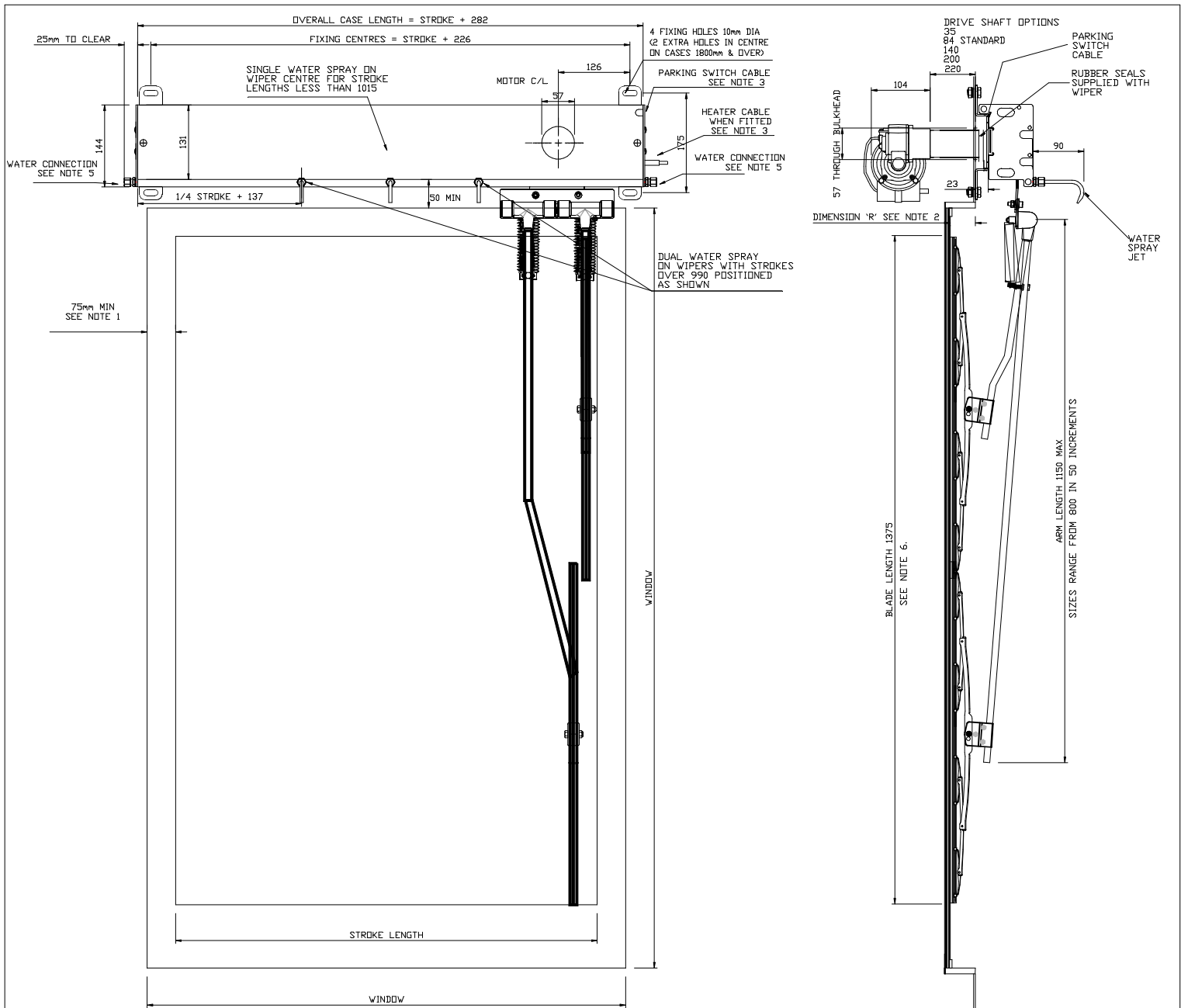
NOTES

1. THESE MINIMUM DIMENSIONS ARE LIMITED BY THE SIZE OF THE CORNER RADII ON THE WINDOW.
2. THE BLADE ARM MAY BE CRANKED WHERE DIMENSION 'R' IS GREATER THAN 75.
3. OPTIONAL HEATER AND PARKING SWITCH 'STANDARD CABLE LENGTH 2 METRES. PARKING SWITCH POSITIONED AT MOTOR END WHEN FITTED.
4. THE HEATER AND PARK SWITCH CABLING TO RUN THROUGH THE BULKHEAD.
5. THE WATER CONNECTION BLANKING PLUG CAN BE FITTED AT EITHER END.
6. WIPER BLADE LENGTH 700 EACH, OVERALL 1375.
7. SEE MANUAL HEATER POWER RATINGS TABLE FOR STROKE OPTIONS AND HEATER DETAILS.
8. THE MOTOR CAN BE POSITIONED RADIALLY THROUGH 360 DEGREES AROUND THE DRIVE SHAFT CENTRE-LINE TO SUIT THE INSTALLATION. ENSURE THAT THE ACCESS SPACE AROUND THE MOTOR SHOWN ON THE DRAWING IS MAINTAINED.

ALL DIMENSIONS IN MM FOR REFERENCE ONLY

CAD FILENAME+DIRECTORY		M:\DRAW\1588\1588-01-CCOVER Dbl Arm	
3rd ANGLE PRO.			
TOLERANCES UNLESS OTHERWISE STATED			
DECIMAL SIZES TO 2 PLACES ± 0.1mm			
BOTH SIZES TO 1 PLACE ± 0.25mm			
NO DECIMAL PLACES ± 0.5mm			
ANGLES ± 1°			
MAT'L-	ISS. DIN	DATE	ISS. DIN DATE
FINISH:-	SCALE:- NTS	DRAWN:- DD	CHKD:-
			1 06.11.18
			CHANGED:-

THE COPYRIGHT OF THIS DRAWING IS VESTED IN WYNN MARINE LTD. AND MUST NOT BE REPRODUCED WITHOUT THE WRITTEN PERMISSION OF THE COMPANY OR USED FOR ANY PURPOSE OTHER THAN THAT FOR WHICH IT HAS BEEN SUPPLIED.	
WYNN MARINE LIMITED	
REDDITCH	ENGLAND
TITLE-SINGLE TYPE C	
INSTALLATION DRG.	
DRAWING No. 1588-01-CCOVER Dbl Arm	



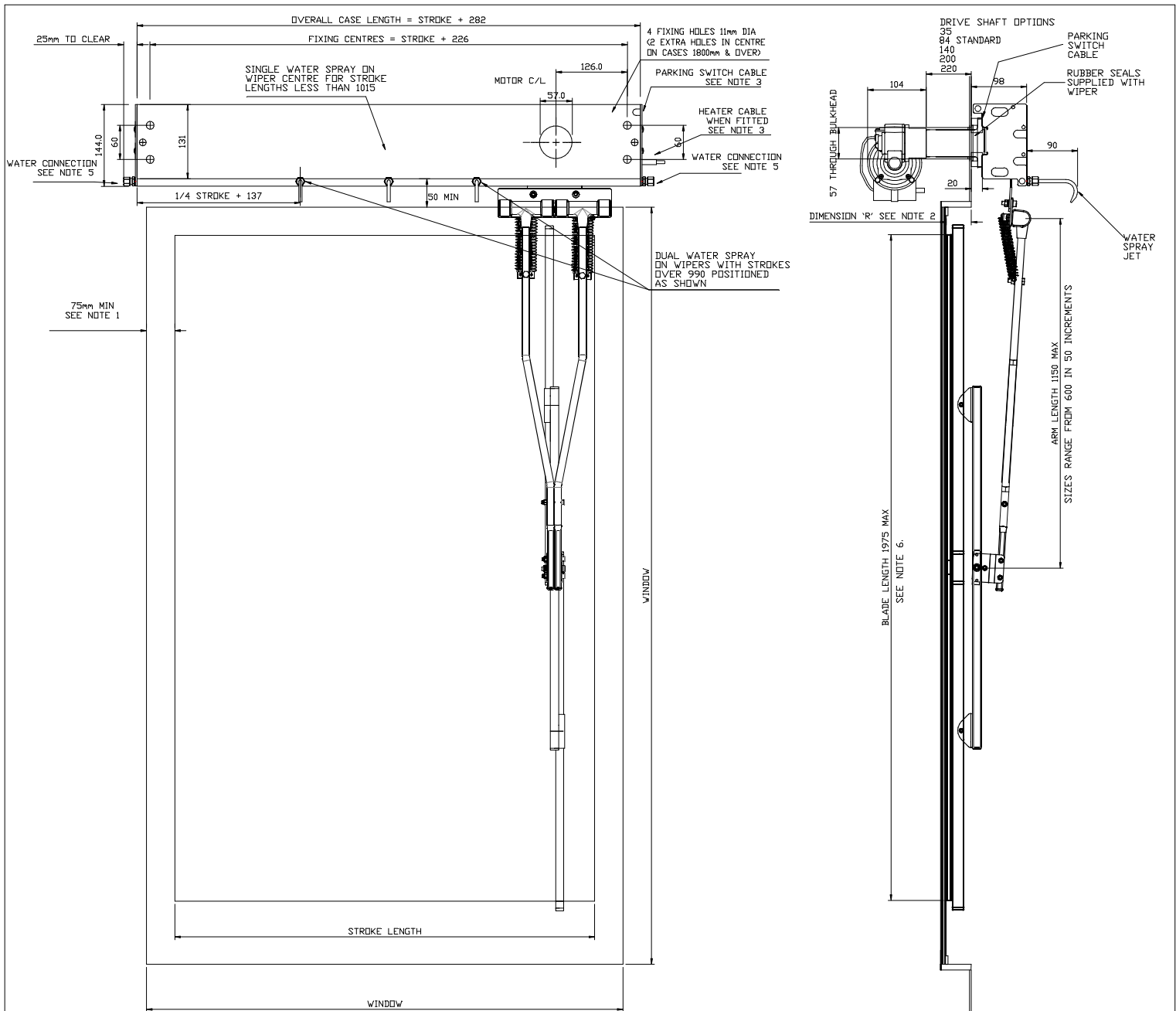
NOTES

1. THESE MINIMUM DIMENSIONS ARE LIMITED BY THE SIZE OF THE CORNER RADII ON THE WINDOW.
2. THE BLADE ARM MAY BE CRANKED WHERE DIMENSION 'R' IS GREATER THAN 75mm.
3. OPTIONAL HEATER AND PARKING SWITCH 'STANDARD CABLE LENGTH 2 METRES. PARKING SWITCH POSITIONED AT MOTOR END WHEN FITTED.
4. THE HEATER AND PARK SWITCH CABLING TO RUN THROUGH THE BULKHEAD.
5. THE WATER CONNECTION BLANKING PLUG CAN BE FITTED AT EITHER END.
6. WIPER BLADE LENGTH 700 EACH, OVERALL 1375.
7. SEE MANUAL HEATER POWER RATINGS TABLE FOR STROKE OPTIONS AND HEATER DETAILS.
8. THE MOTOR CAN BE POSITIONED RADIALLY THROUGH 360 DEGREES AROUND THE DRIVE SHAFT CENTRE-LINE TO SUIT THE INSTALLATION. ENSURE THAT THE ACCESS SPACE AROUND THE MOTOR SHOWN ON THE DRAWING IS MAINTAINED.

ALL DIMENSIONS IN MM FOR REFERENCE ONLY

CAD FILENAME+DIRECTORY		M:\DRAW\1588\1588-01-BKT Dbl Arm	
3rd ANGLE PRO.			
TOLERANCES UNLESS OTHERWISE STATED			
DECIMAL SIZES TO 2 PLACES ± 0.1mm			
BOTH SIZES TO 1 PLACE ± 0.25mm			
NO DECIMAL PLACES ± 0.5mm			
ANGLES ± 1°			
MAT'L:-	ISS. DIN	DATE	ISS. DIN DATE
FINISH:-	SCALE:- NTS	DRAWN:- DD	CHKD:-
			1 25.09.19
			CHANGED:-

THE COPYRIGHT OF THIS DRAWING IS VESTED IN WYNN MARINE LTD. AND MUST NOT BE REPRODUCED WITHOUT THE WRITTEN PERMISSION OF THE COMPANY OR USED FOR ANY PURPOSE OTHER THAN THAT FOR WHICH IT HAS BEEN SUPPLIED.	
WYNN MARINE LIMITED	
REDDITCH	ENGLAND
TITLE-SINGLE TYPE C	
INSTALLATION DRG.	
DRAWING No. 1588-01-BKT Dbl Arm	



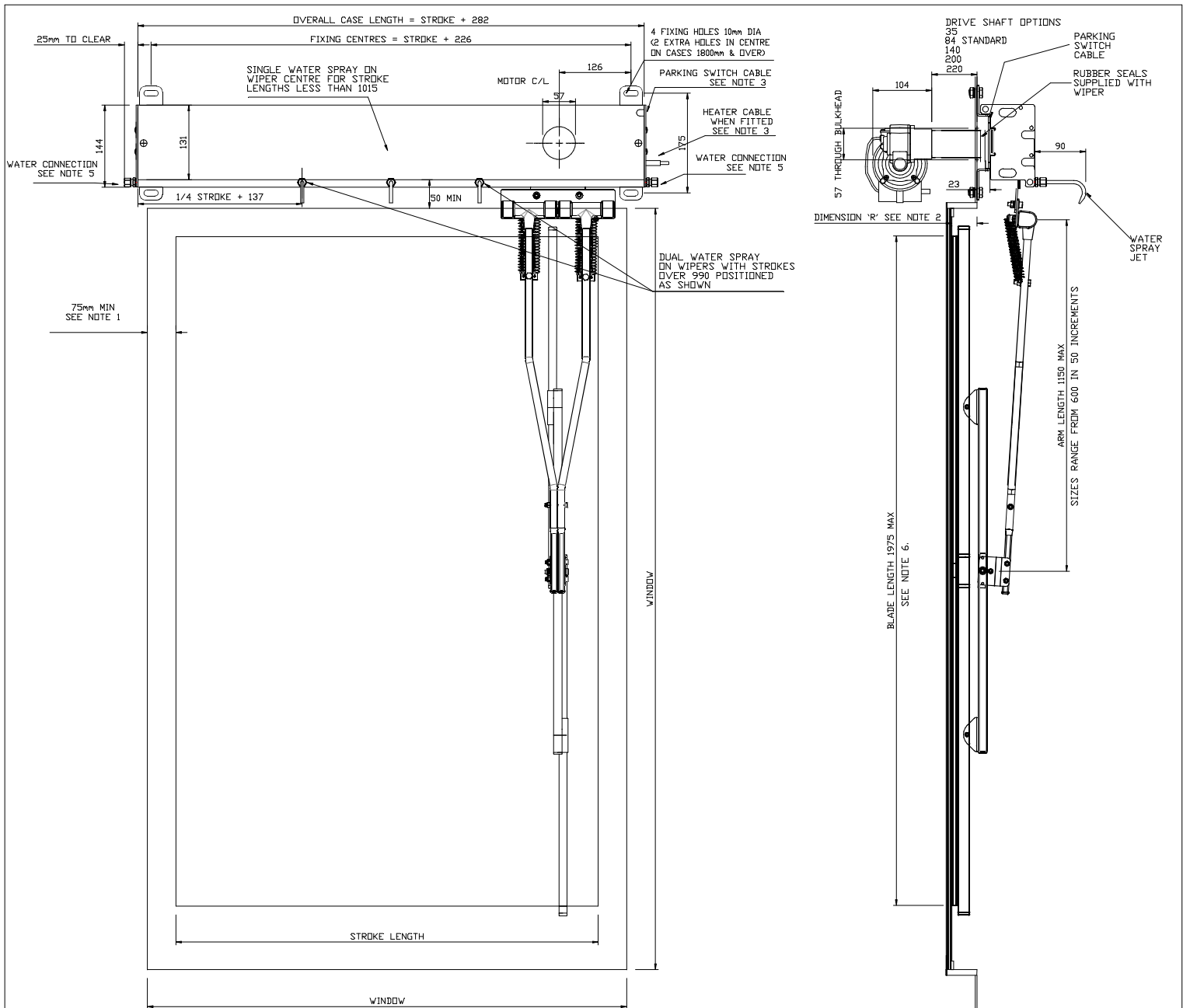
NOTES

1. THESE MINIMUM DIMENSIONS ARE LIMITED BY THE SIZE OF THE CORNER RADII ON THE WINDOW.
2. THE BLADE ARM MAY BE CRANKED WHERE DIMENSION 'R' IS GREATER THAN 75.
3. OPTIONAL HEATER AND PARKING SWITCH 'STANDARD CABLE LENGTH 2 METRES. PARKING SWITCH POSITIONED AT MOTOR END WHEN FITTED.
4. THE HEATER AND PARK SWITCH CABLING TO RUN THROUGH THE BULKHEAD.
5. THE WATER CONNECTION BLANKING PLUG CAN BE FITTED AT EITHER END.
6. DUAL WIPER BLADE LENGTHS RANGE FROM 1175 TO 1975 IN 100 INCREMENTS.
7. SEE MANUAL HEATER POWER RATINGS TABLE FOR STROKE OPTIONS AND HEATER DETAILS.
8. THE MOTOR CAN BE POSITIONED RADIALLY THROUGH 360 DEGREES AROUND THE DRIVE SHAFT CENTRE-LINE TO SUIT THE INSTALLATION. ENSURE THAT THE ACCESS SPACE AROUND THE MOTOR SHOWN ON THE DRAWING IS MAINTAINED.

ALL DIMENSIONS IN MM FOR REFERENCE ONLY

CAD FILENAME+DIRECTORY		M:\DRAW\1588\1588-01-CCOVER HD Arm	
3rd ANGLE PRO.			
TOLERANCES UNLESS OTHERWISE STATED			
DECIMAL SIZES TO 2 PLACES ± 0.1mm			
BOTH SIZES TO 1 PLACE ± 0.25mm			
NO DECIMAL PLACES ± 0.5mm			
ANGLES ± 1°			
MAT'L-	ISS. DIN	DATE	06.11.18
FINISH:-	SCALE:- NTS	DRAWN:- DD	CHKD:-

THE COPYRIGHT OF THIS DRAWING IS VESTED IN WYNN MARINE LTD. AND MUST NOT BE REPRODUCED WITHOUT THE WRITTEN PERMISSION OF THE COMPANY OR USED FOR ANY PURPOSE OTHER THAN THAT FOR WHICH IT HAS BEEN SUPPLIED.	
WYNN MARINE LIMITED	
REDDITCH	ENGLAND
TITLE-SINGLE TYPE C	
INSTALLATION DRG.	
DRAWING No. 1588-01-CCOVER HD Arm	



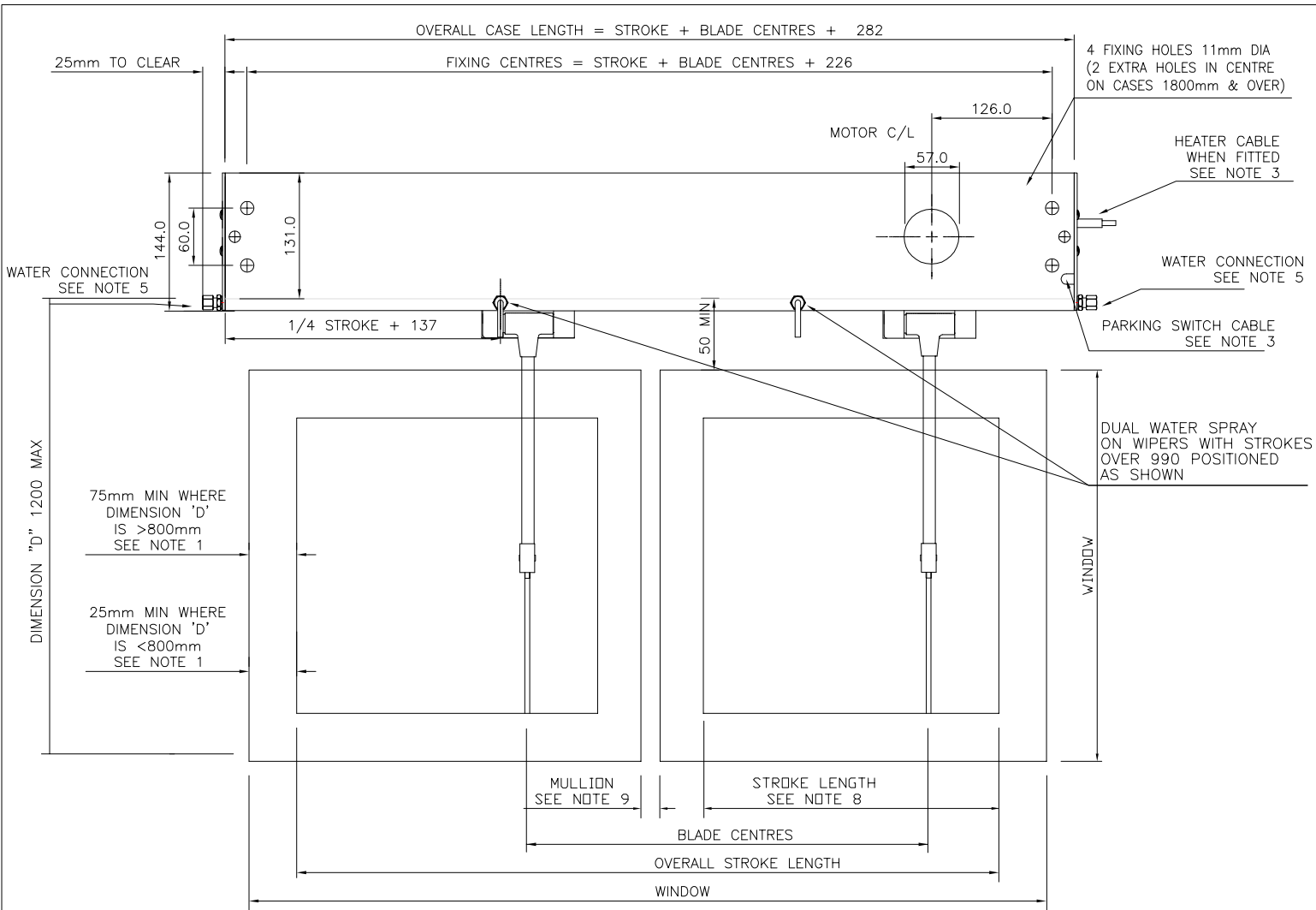
NOTES

1. THESE MINIMUM DIMENSIONS ARE LIMITED BY THE SIZE OF THE CORNER RADII ON THE WINDOW.
2. THE BLADE ARM MAY BE CRANKED WHERE DIMENSION 'R' IS GREATER THAN 75mm.
3. OPTIONAL HEATER AND PARKING SWITCH 'STANDARD CABLE LENGTH 2 METRES. PARKING SWITCH POSITIONED AT MOTOR END WHEN FITTED.
4. THE HEATER AND PARK SWITCH CABLING TO RUN THROUGH THE BULKHEAD.
5. THE WATER CONNECTION BLANKING PLUG CAN BE FITTED AT EITHER END.
6. DUAL WIPER BLADE LENGTHS RANGE FROM 1175 TO 1975 IN 100 INCREMENTS.
7. SEE MANUAL HEATER POWER RATINGS TABLE FOR STROKE OPTIONS AND HEATER DETAILS.
8. THE MOTOR CAN BE POSITIONED RADIALLY THROUGH 360 DEGREES AROUND THE DRIVE SHAFT CENTRE-LINE TO SUIT THE INSTALLATION. ENSURE THAT THE ACCESS SPACE AROUND THE MOTOR SHOWN ON THE DRAWING IS MAINTAINED.

ALL DIMENSIONS IN MM FOR REFERENCE ONLY

CAD FILENAME+DIRECTORY		M:\DRAW\1588\1588-01-BKT HD Arm	
3rd ANGLE PRO.			
TOLERANCES UNLESS OTHERWISE STATED			
DECIMAL SIZES TO 2 PLACES ± 0.1mm			
FRACTIONAL SIZES TO 1 PLACE ± 0.25mm			
NO DECIMAL PLACES ± 0.5mm			
ANGLES ± 1°			
MAT'L-	ISS. DIN	DATE	ISS. DIN DATE
FINISH:-	SCALE:- NTS	DRAWN:- DD	CHKD:-
			1 25.09.19
			CHANGED:-

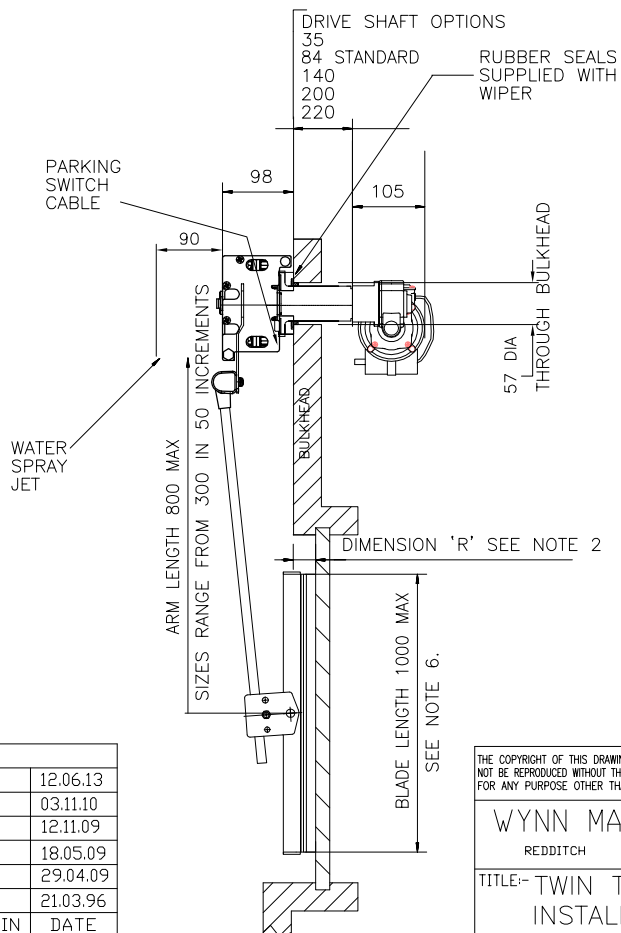
THE COPYRIGHT OF THIS DRAWING IS VESTED IN WYNN MARINE LTD. AND MUST NOT BE REPRODUCED WITHOUT THE WRITTEN PERMISSION OF THE COMPANY OR USED FOR ANY PURPOSE OTHER THAN THAT FOR WHICH IT HAS BEEN SUPPLIED.	
WYNN MARINE LIMITED	
REDDITCH	ENGLAND
TITLE-SINGLE TYPE C	
INSTALLATION DRG.	
DRAWING No. 1588-01-BKT HD Arm	



NOTES

1. THESE MINIMUM DIMENSIONS ARE LIMITED BY THE SIZE OF THE CORNER RADII ON THE WINDOW.
2. THE BLADE ARM MAY BE CRANKED WHERE DIMENSION "R" IS GREATER THAN 75.
3. OPTIONAL HEATER AND PARKING SWITCH STANDARD CABLE LENGTH 2 METRES. PARKING SWITCH POSITIONED AT MOTOR END WHEN FITTED.
4. THE HEATER AND PARK SWITCH CABLING TO RUN THROUGH THE BULKHEAD.
5. THE WATER CONNECTION BLANKING PLUG CAN BE FITTED AT EITHER END.
6. RIGID WIPER BLADE LENGTHS RANGE FROM 300 TO 800 AND ARTICULATED WIPER BLADE LENGTHS RANGE FROM 500 TO 1000 BOTH IN 50 INCREMENTS.
7. SEE MANUAL HEATER POWER RATINGS TABLE FOR STROKE OPTIONS AND HEATER DETAILS.
8. THE MOTOR CAN BE POSITIONED RADIALLY THROUGH 360 DEGREES AROUND THE DRIVE SHAFT CENTRE-LINE TO SUIT THE INSTALLATION. ENSURE THAT THE ACCESS SPACE AROUND THE MOTOR SHOWN ON THE DRAWING IS MAINTAINED.

ALL DIMENSIONS IN MM FOR REFERENCE ONLY



CAD FILENAME+DIRECTORY	M:\DRAW\1588\1588-03-CCOVER					
3rd ANGLE PRD.					6	12.06.13
					5	03.11.10
					4	12.11.09
		9	25.10.18	3	18.05.09	
		8	19.01.16	2	29.04.09	
		7	25.11.13	1	21.03.96	
MAT'L:-	ISS. DIN	DATE	ISS. DIN	DATE	ISS. DIN	DATE
FINISH:-	SCALE:- NTS	DRAWN:- DD	CHKD:-	CHANGED:-		

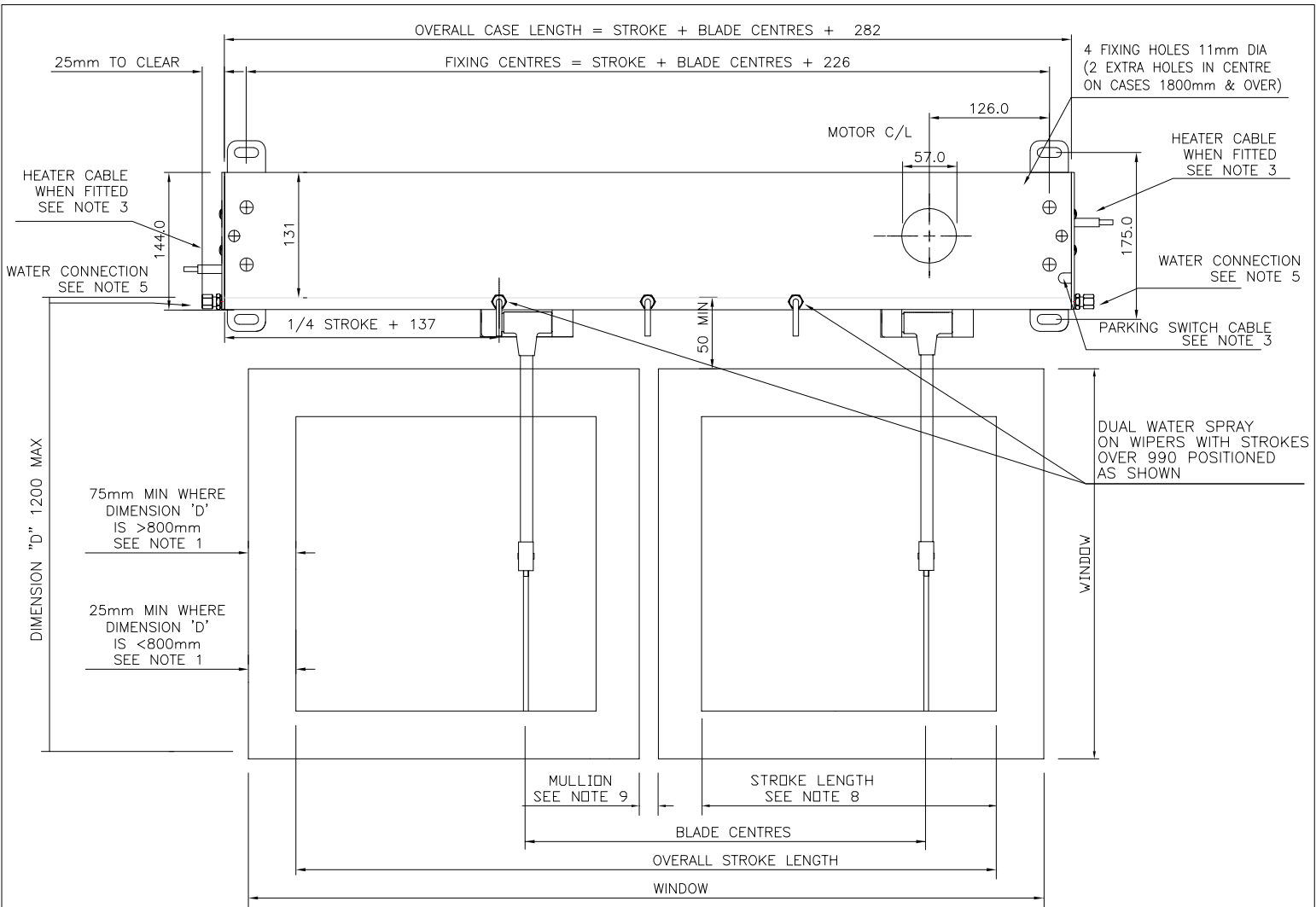
THE COPYRIGHT OF THIS DRAWING IS VESTED IN WYNN MARINE LTD. AND MUST NOT BE REPRODUCED WITHOUT THE WRITTEN PERMISSION OF THE COMPANY OR USED FOR ANY PURPOSE OTHER THAN THAT FOR WHICH IT HAS BEEN SUPPLIED.

WYNN MARINE LIMITED

REDDITCH ENGLAND

TITLE:- TWIN TYPE C
INSTALLATION DRG.

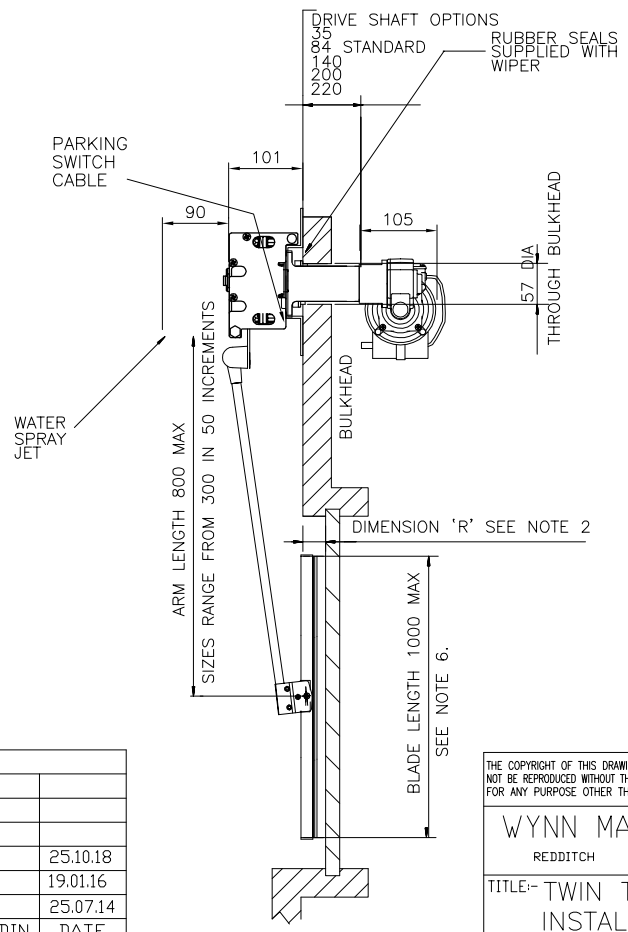
DRAWING No. 1588-03-CCOVER



NOTES

1. THESE MINIMUM DIMENSIONS ARE LIMITED BY THE SIZE OF THE CORNER RADII ON THE WINDOW.
2. THE BLADE ARM MAY BE CRANKED WHERE DIMENSION "R" IS GREATER THAN 75.
3. OPTIONAL HEATER AND PARKING SWITCH STANDARD CABLE LENGTH 2 METRES. PARKING SWITCH POSITIONED AT MOTOR END WHEN FITTED.
4. THE HEATER AND PARK SWITCH CABLING TO RUN THROUGH THE BULKHEAD.
5. THE WATER CONNECTION BLANKING PLUG CAN BE FITTED AT EITHER END.
6. RIGID WIPER BLADE LENGTHS RANGE FROM 300 TO 800 AND ARTICULATED WIPER BLADE LENGTHS RANGE FROM 500 TO 1000 BOTH IN 50 INCREMENTS.
7. SEE MANUAL HEATER POWER RATINGS TABLE FOR STROKE OPTIONS AND HEATER DETAILS.
8. THE MOTOR CAN BE POSITIONED RADIALLY THROUGH 360 DEGREES AROUND THE DRIVE SHAFT CENTRE-LINE TO SUIT THE INSTALLATION. ENSURE THAT THE ACCESS SPACE AROUND THE MOTOR SHOWN ON THE DRAWING IS MAINTAINED.

ALL DIMENSIONS IN MM FOR REFERENCE ONLY



CAD FILENAME+DIRECTORY	M:\DRAW\1588\1588-03-BKT								
3rd ANGLE PRD.									
TOLERANCES UNLESS OTHERWISE STATED									
DECIMAL DIMS. TO 2 PLACES ± 0.1mm				3		25.10.18			
NO DECIMAL PLACES ± 0.5mm				2		19.01.16			
ANGLES ± 1°				1		25.07.14			
MAT'L:-	ISS.	DIN	DATE	ISS.	DIN	DATE	ISS.	DIN	DATE
FINISH:-	SCALE:-	NTS	DRAWN:-	DD	CHKD:-	CHANGED:-			

THE COPYRIGHT OF THIS DRAWING IS VESTED IN WYNN MARINE LTD. AND MUST NOT BE REPRODUCED WITHOUT THE WRITTEN PERMISSION OF THE COMPANY OR USED FOR ANY PURPOSE OTHER THAN THAT FOR WHICH IT HAS BEEN SUPPLIED.

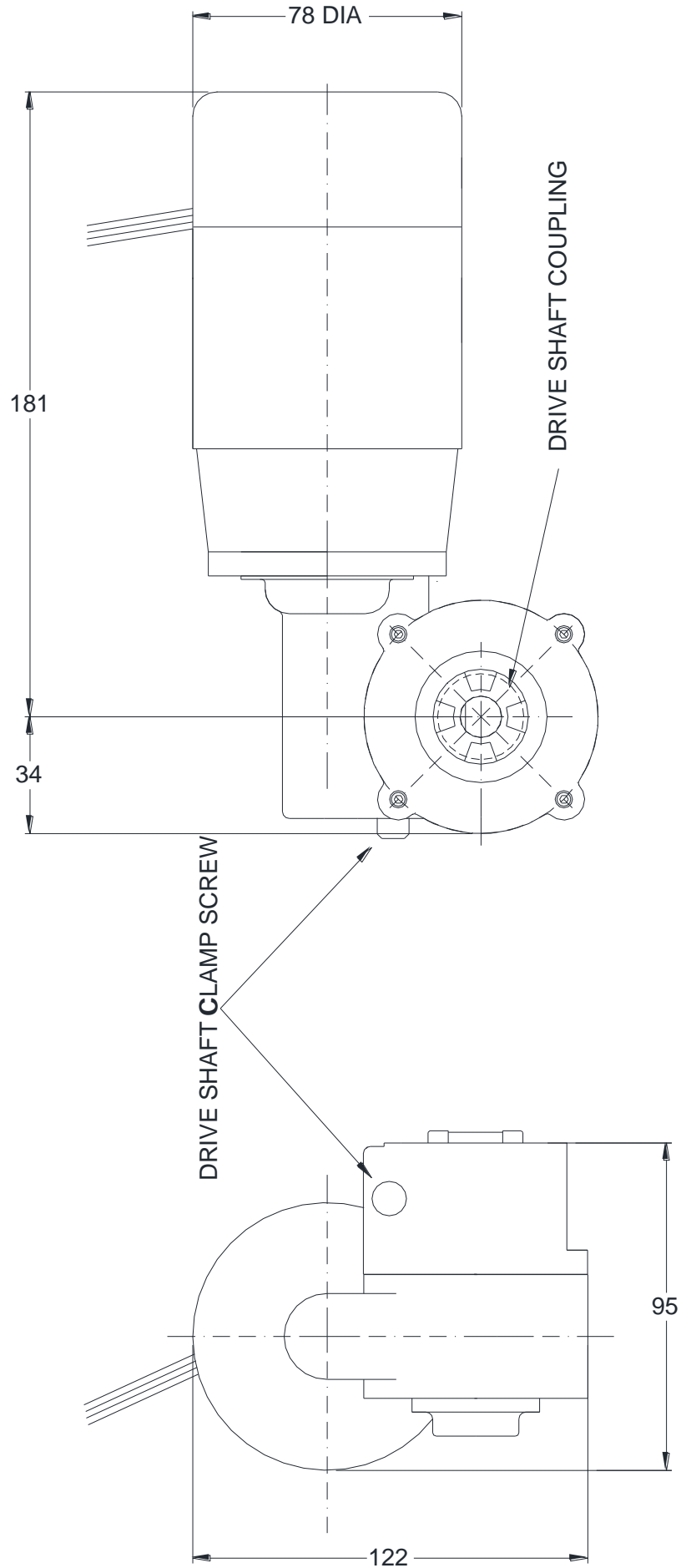
WYNN MARINE LIMITED

REDDITCH ENGLAND

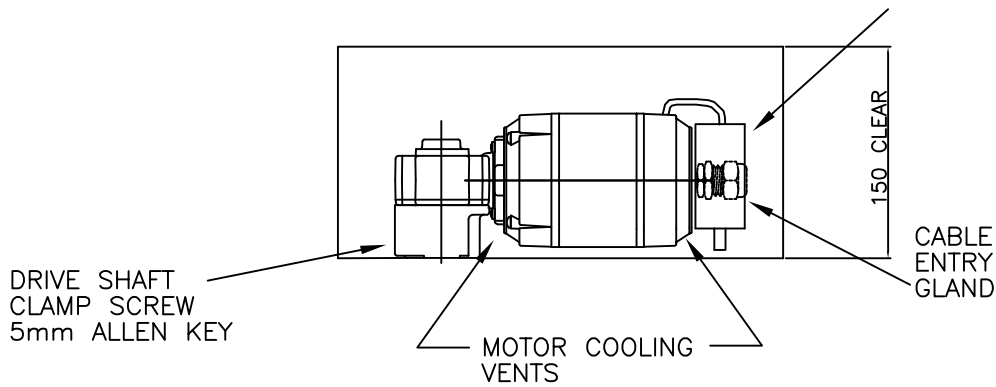
TITLE:- TWIN TYPE C
INSTALLATION DRG.

DRAWING No. 1588-03-BKT

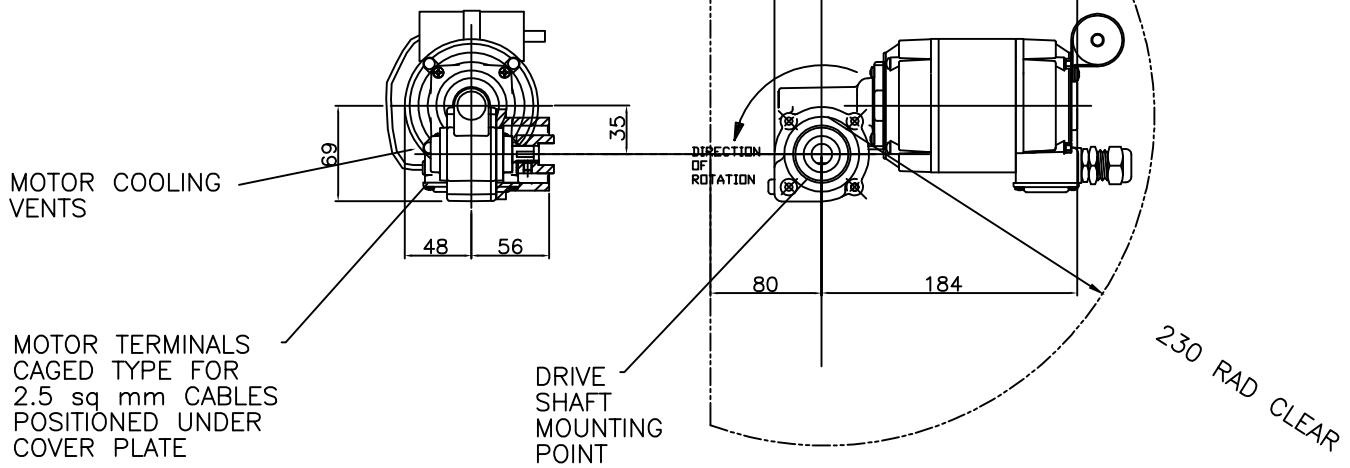
DC MOTOR DIMENSIONS



CAPACITORS FITTED TO SINGLE PHASE MOTORS ONLY



THIS SPACE SHOULD NOT BE OBSTRUCTED TO PERMIT ACCESS FOR MAINTENANCE & INSTALLATION



NOTES

1. USE T RATED FUSES.
2. EARTH BONDING TO CONFORM TO APPROPRIATE NATIONAL CODES AND STANDARDS.
3. CUSTOMER TO WIRE FROM MOTOR CABLES OR TERMINATIONS TO TERMINALS ON THE CONTROLLER WHEN SUPPLIED.
4. ALL MOTORS CAN BE ROTATED THROUGH 360 DEGREES AROUND THE DRIVE SHAFT CENTRE-LINE. NOTE THE ACCESS SPACE WILL ROTATE WITH THE MOTOR.

PARVALUX MOTORS WEIGHT 4.5Kg

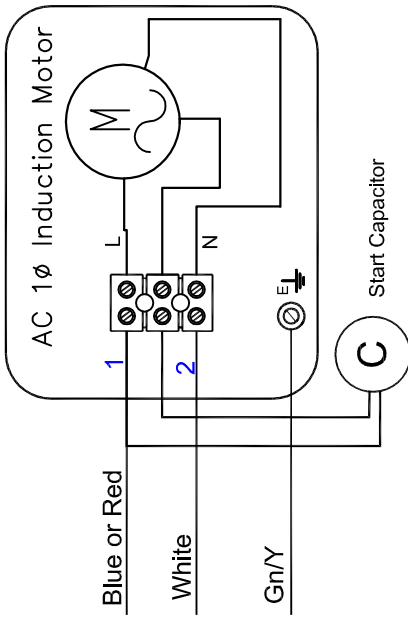
M O T O R O P T I O N S

MOTOR TYPE	VOLTAGE	Hz	PHASE	SPEED	SAFE COMPASS DISTANCE MIN	RUN CURRENT		FUSE RATING		CAPACITOR
						50Hz	60Hz	50Hz	60Hz	
PARV61	115AC	50/60	3	2	0.5M	1.3A	1.1A	2.0A	1.6A	-
PARV62D	230AC	50/60	3	2	0.5M	0.6A	0.6A	1.0A	1.0A	-
PARV64	230AC	50/60	1	1	0.5M	1.2A	1.6A	1.6A	2.0A	8.4uF M-MISC-098PARV
PARV64L	230AC	50/60	1	1	0.5M	0.75A	0.95A	1.0A	1.6A	5uF M-MISC-095PARV
PARV65	115AC	50/60	1	1	0.5M	2.3A	2.6A	2.5A	3.15A	28uF M-MISC-099PARV
PARV65L	115AC	50/60	1	1	0.5M	1.5A	1.6A	2.0A	3.15A	28uF M-MISC-099PARV
PARV81	115AC	50	3	V	0.5M	1.5A		CONTROLLER		-
PARV82	220AC	50	3	V	0.5M	1.1A		CONTROLLER		-

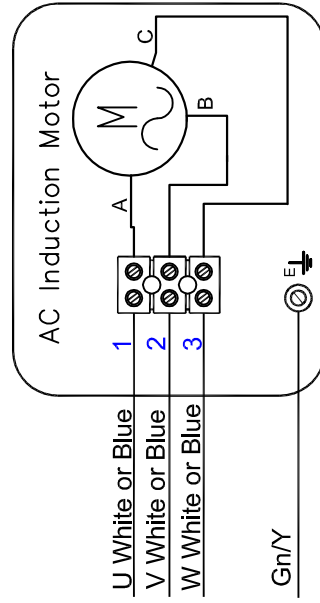
ALL UNSPECIFIED UNITS OF LENGTH IN mm's

5		12.05.11	WYNN MARINE LTD REDDITCH ENGLAND	THE COPYRIGHT OF THIS DRAWING IS VESTED IN WYNN MARINE LTD. AND MUST NOT BE REPRODUCED WITHOUT WRITTEN PERMISSION OR USED FOR ANY PURPOSE OTHER THAN THAT FOR WHICH IT HAS BEEN SUPPLIED.	
4		03.11.10			TITLE:- TYPE C WIPER STANDARD PARVALUX MOTOR OPTIONS CHART
ISSUE	DIN	DATE			DRAWING NUMBER:- INST-1588-06

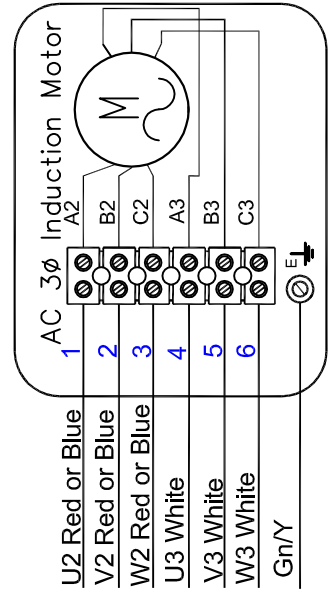
**CUSTOMER
WIRING**



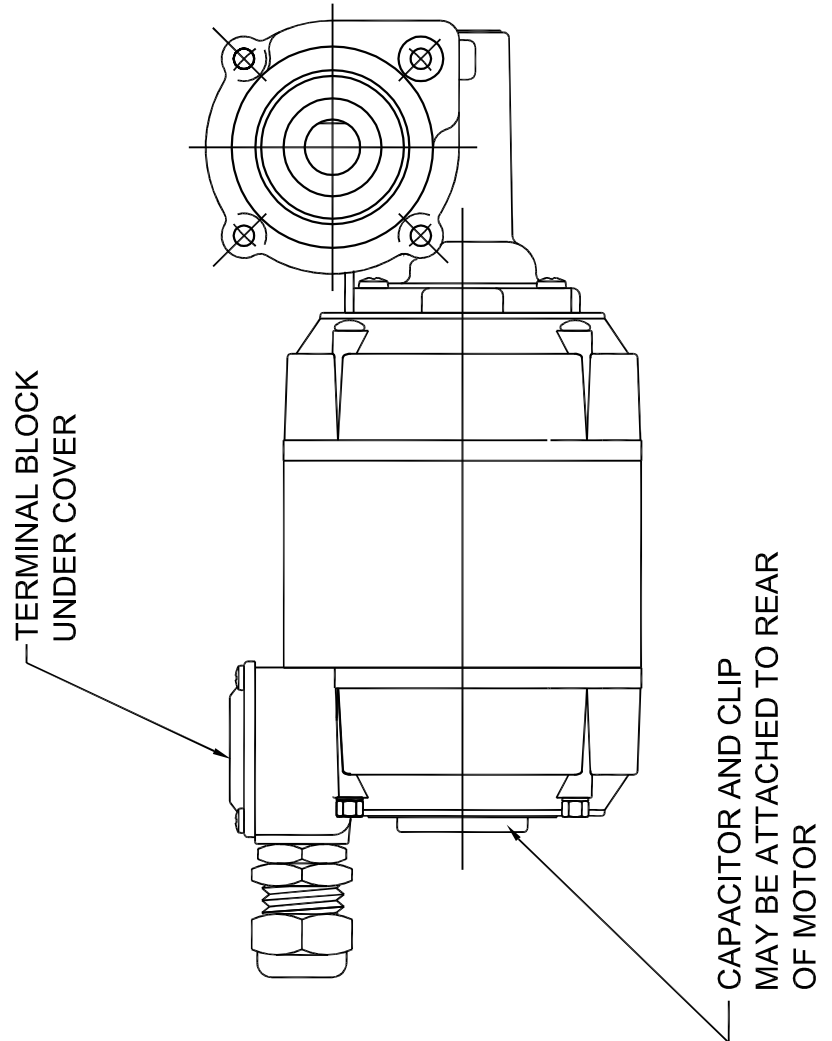
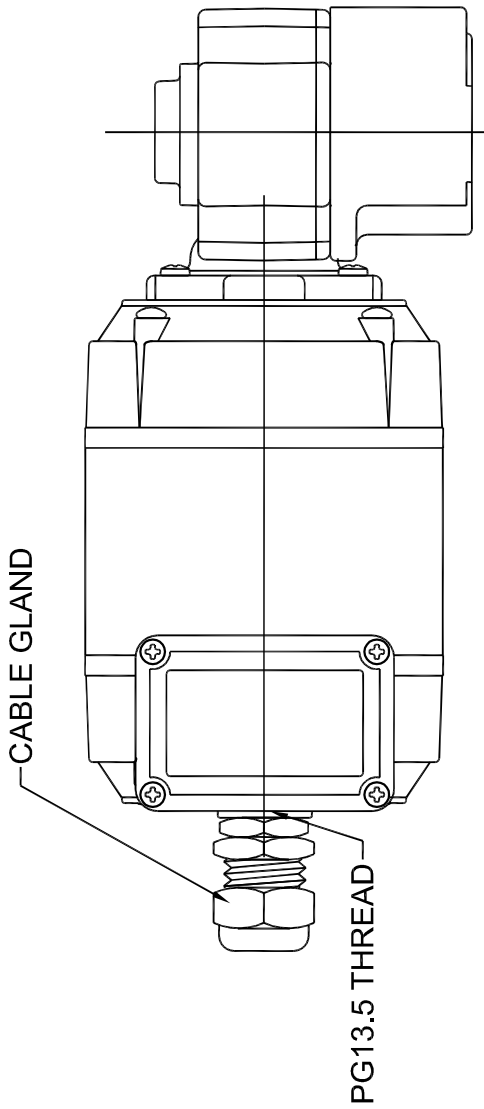
**MOTOR TERMINAL BLOCK WIRING DIAGRAM
FOR A PARVALUX 1 PHASE MOTOR
FIT CAPACITORS AS SUPPLIED**



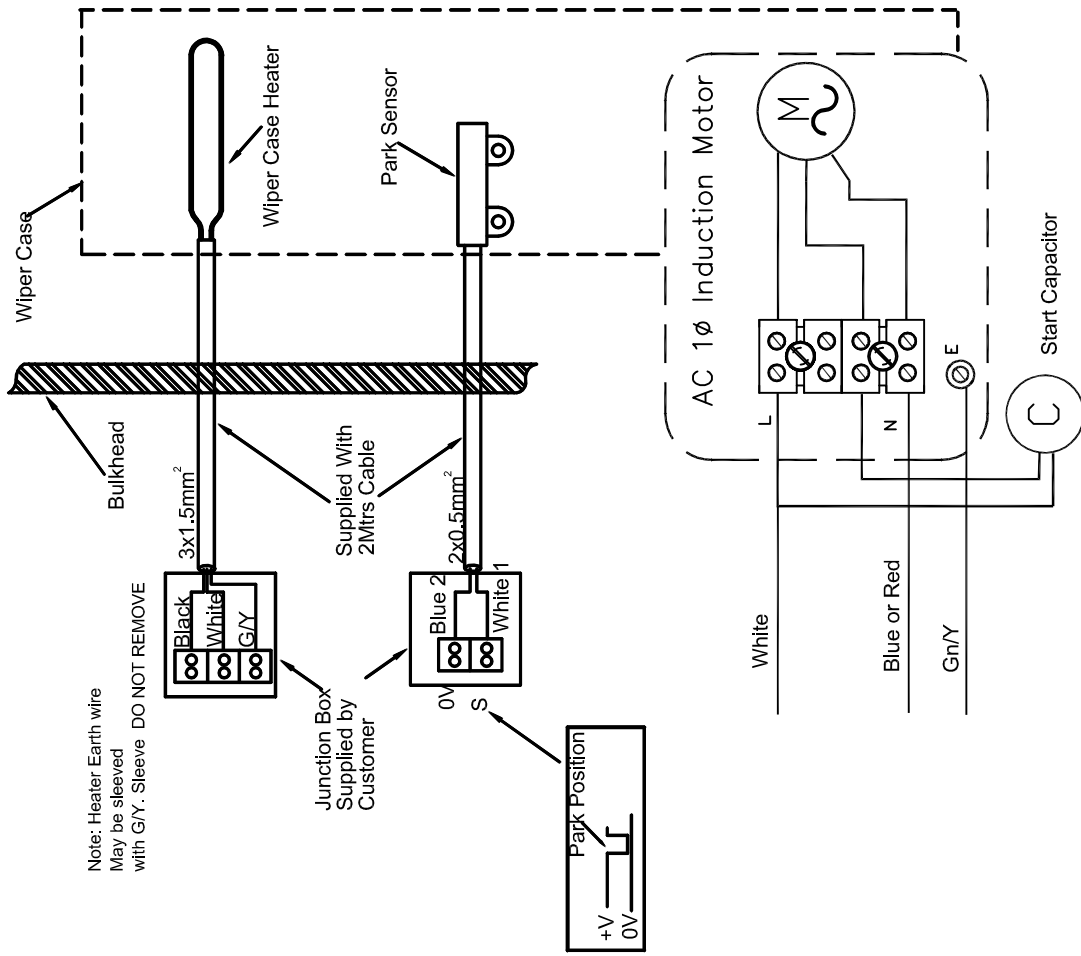
**MOTOR TERMINAL BLOCK WIRING DIAGRAM
FOR A PARVALUX GA81/GA82 MOTOR**



**MOTOR TERMINAL BLOCK WIRING DIAGRAM
FOR A PARVALUX 3 PHASE 2SP MOTOR**

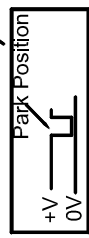



**WIRING DIAGRAM FOR PARVALUX TYPE AC MOTORS
FOR WYNN TYPE C STRAIGHT LINE WIPER**

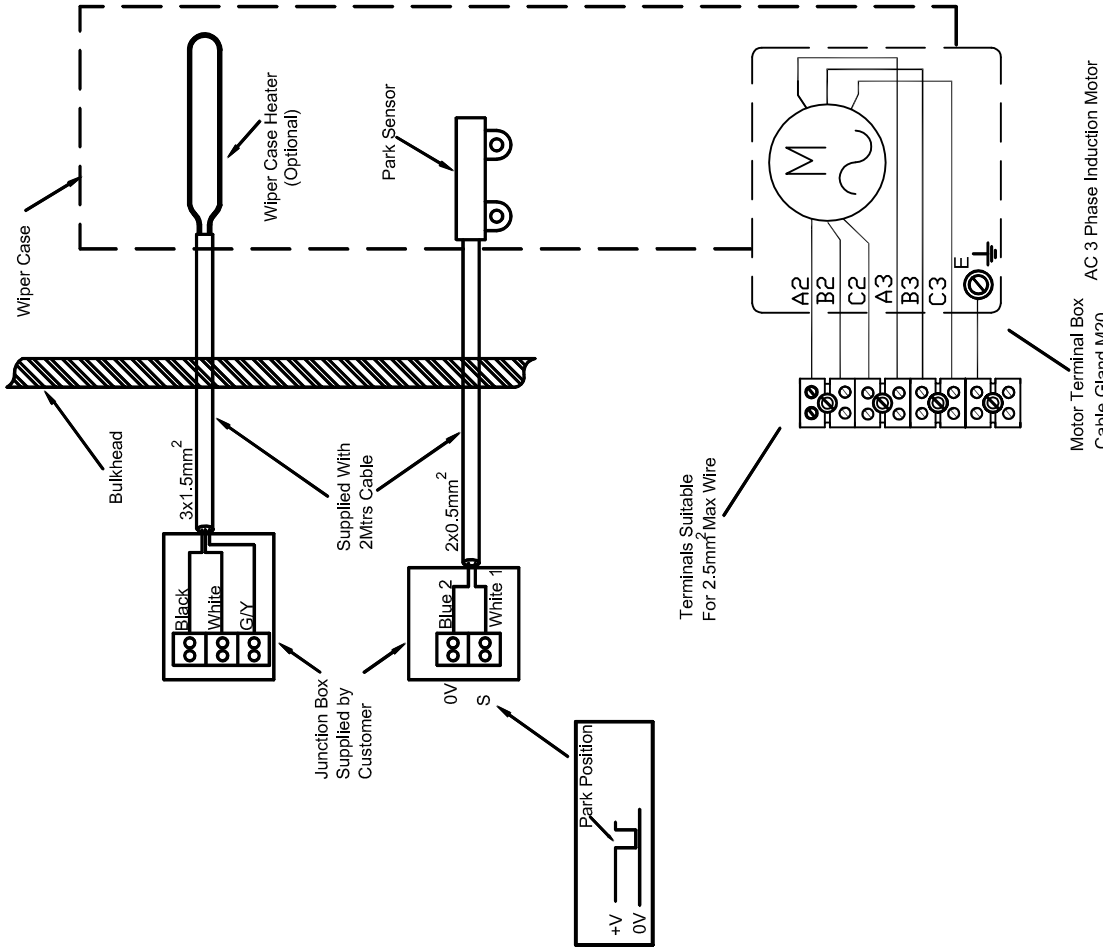



Note: Heater Earth wire
May be sleeved
with G/Y. Sleeve DO NOT REMOVE

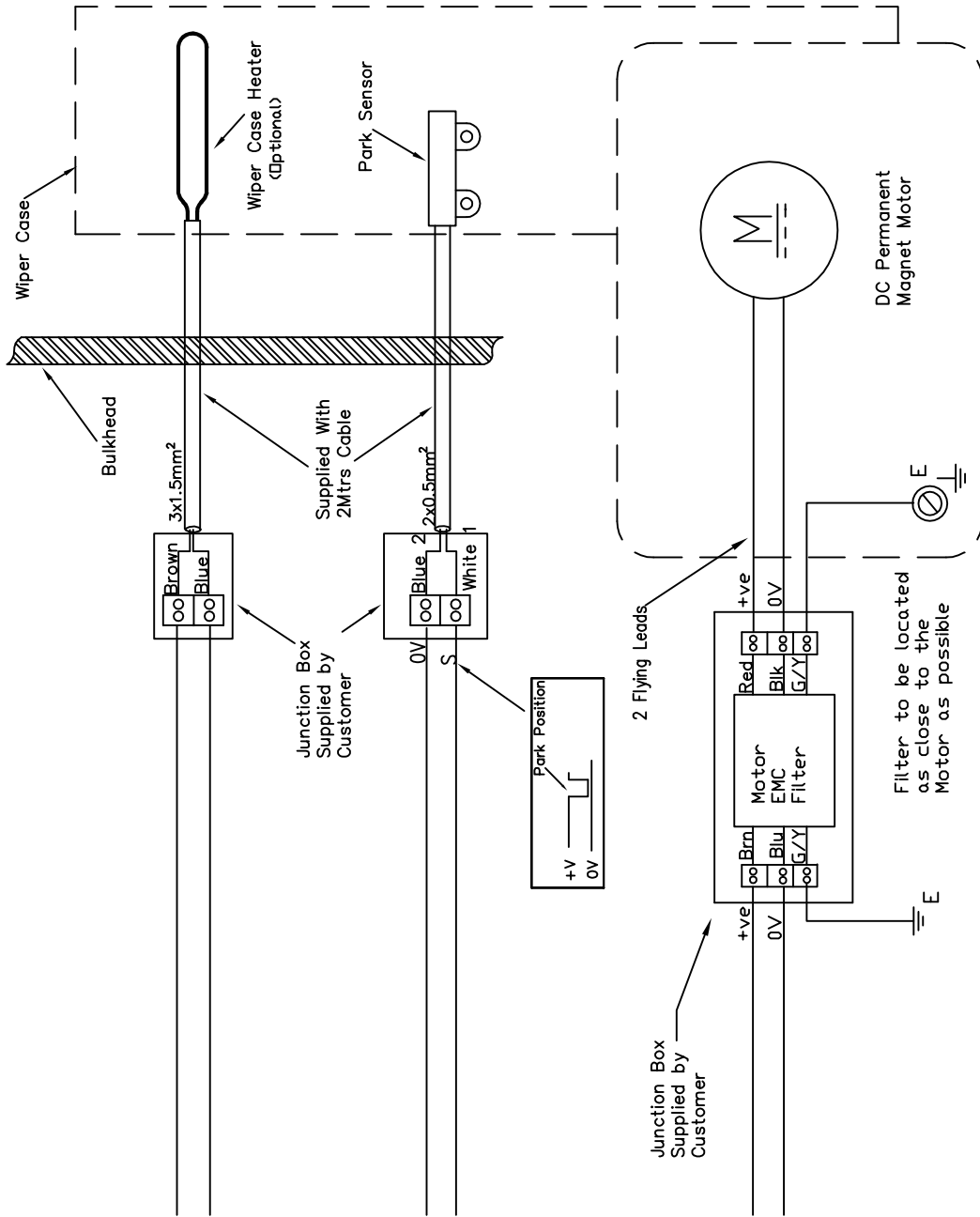
Junction Box
Supplied by
Customer



3rd ANGLE PRO.  TOLERANCES UNLESS OTHERWISE STATED DECIMAL DIMS. TO 2 PLACES ± 0.1mm. DECIMAL DIMS. TO 1 PLACE ± 0.25mm NO DECIMAL PLACES ± 0.5mm ANGLES ± 1° MAT'L:- 1588\EL\DC-NC-1	ISS.		DIN	DATE	ISS.	DIN	DATE	ISS.	DIN	DATE	ISS.	DIN	DATE	MOD STATUS	THE COPYRIGHT OF THIS DRAWING IS VESTED IN WYNN MARINE LTD. AND MUST NOT BE REPRODUCED WITHOUT WRITTEN PERMISSION OF THE COMPANY OR USED FOR ANY PURPOSE OTHER THAN THAT FOR WHICH IT HAS BEEN SUPPLIED. WYNN MARINE LIMITED CHELTENHAM ENGLAND TITLE:- CONNECTION DIAGRAM Type 'C' Wiper with a 1 Phase AC Motor DRAWING No. 1588-EL-AC-C	
														5		01.08.13
														4		23.6.08
														3		27.11.99
														2		2.12.99
													1	2.12.99	DATE	
															CHANGED:-	
															SCALE:- NTS	
															DRAWN:- DCT	
															CHKD:-	



3rd ANGLE PRO. 	MOD STATUS						THE COPYRIGHT OF THIS DRAWING IS VESTED IN WYNN MARINE LTD. AND MUST NOT BE REPRODUCED WITHOUT WRITTEN PERMISSION OF THE COMPANY OR USED FOR ANY PURPOSE OTHER THAN THAT FOR WHICH IT HAS BEEN SUPPLIED.					
	TOLERANCES UNLESS OTHERWISE STATED DECIMAL DIMS. TO 2 PLACES ± 0.1mm, DECIMAL DIMS. TO 1 PLACE ± 0.25mm NO DECIMAL PLACES ± 0.5mm ANGLES ± 1°						WYNN MARINE LIMITED CHELTENHAM ENGLAND					
MAT'L:- 1588\EL\DC-NC-1	ISS.	DIN	DATE	ISS.	DIN	DATE	ISS.	DIN	DATE	ISS.	DIN	DATE
							3		23.6.08			
							2		25.5.01			
							1		2.12.99			
	SCALE:-NTS			DRAWN:- DCT			CHANGED:-			DRAWING No. 1588-EL-3AC-C		
TITLE:- CONNECTION DIAGRAM Type 'C' Wiper with a 3 Phase AC Motor												



THE COPYRIGHT OF THIS DRAWING IS VESTED IN WYNN MARINE LTD. AND MUST NOT BE REPRODUCED WITHOUT WRITTEN PERMISSION OF THE COMPANY OR USED FOR ANY PURPOSE OTHER THAN THAT FOR WHICH IT HAS BEEN SUPPLIED.

WYNN MARINE LIMITED
 CHELTENHAM
 ENGLAND

TITLE:- CONNECTION DIAGRAM
 Type 'C' Wiper with a DC Motor and EMC filter

DRAWING No. 1588-EL-DC-NC

MOD STATUS	ISS.	DIN	DATE	ISS.	DIN	DATE	CHGD:-
	3		02.3.09				
	2		23.6.08				
	1		2.12.99				

3rd ANGLE PRO.

TOLERANCES UNLESS OTHERWISE STATED
 DECIMAL DIMS. TO 2 PLACES ± 0.1mm.
 DECIMAL DIMS. TO 1 PLACE ± 0.25mm
 NO. DECIMAL PLACES ± 0.5mm
 ANGLES ± 1°

MAT'L:-

SCALE:- NTS DRAWN:- DCT

1588\EL\DC-NC-1

GENERAL FAULT FINDING GUIDE

NOTE: This fault finding guide assumes a reasonable level of technical ability and should be carried out by a suitably qualified person.

Problems: Control panel does not operate wiper.

Possible Cause	Solution
No Power.	Check power supply is on and working.
Power not reaching motor	Check ship's incoming supply fuses or circuit breakers. Check for wiring fault, broken wire or loose terminal. If possible confirm (with voltmeter) power is present at motor input and output terminals of control module.
Connections to motor incorrect.	Check wiring according to the appropriate electrical installation drawing.
Ship's voltage too low.	Check voltage as close to the motor as possible, with motor running. See relevant tables for acceptable values.
Motor Thermal Cut Out tripped. Single Phase AC motors only.	The 1 Ø AC motors have a thermal cut out embedded into the stator winding. If the motor gets too hot the thermal cut out disconnects the supply to the motor. Switch off and allow the motor to cool down. About 20 minutes later the cut out will reset allowing normal operation.
Motor brushes or commutator worn (DC motor only)	Check motor commutator and brushes
Motor burned out.	This should not be possible - could happen by incorrect voltage of motor, or a motor fault. The motor needs a reasonable amount of free space to provide sufficient cooling airflow – check. The motor should be protected by fuses, check type and rating.
Wiper motor not fully engaged on coupling.	Slacken pinch bolt, move motor and/or wiper arm to align coupling and push motor into engagement with coupling. Retighten pinch bolt. Make sure that the rubber coupling is fitted
Carriage motion jammed.	It should be possible by pushing the blade arm to move the mechanism over the stroke length. Remove cover and check for obstructions. Check the Blade Arm Screws.
Drive pulley turning but belt slipping.	Excessive friction - Check carriage rollers and motor drive coupling. Replace as required. Idler pulley springs broken or missing. Replace.
Drive belt broken or damaged.	Inspect belt for slip or burn damage. Belt at end of life. Replace.
Idler pulley jammed.	Damaged by impact, or bearing system failed. Replace assembly.
Corrosion.	If corroded, check for water ingress through seals and tightness of connections, Replace wiper unit if necessary

Problem: Wiper runs but at wrong speed

Possible Cause	Solution
Ship's voltage incorrect.	Check voltage as near as possible to the motor, with motor running.
Motor brushes worn (DC Only)	Inspect brushes and replace as necessary.
High / Low speed wiring incorrect (3 Phase 2 Speed models only)	Check wiring complies with appropriate drawing.
One phase missing (3 Phase 2 Speed models only)	Check controller. Check ships fuses.

Problem: Wiper runs but is noisy

Possible Cause	Solution
Wiper arm is obstructed by: - Window frame, spray jets, etc.	If necessary gently bend arms or spray jets out of path of wiper arm.
Incorrect arm attachment screws.	These must not be longer than the 10mm screws provided by Wynn
Vibration of wiper unit	Check the front cover fixing screws are secure.
Arm attachment plate fouling on wiper case	Attachment screws not fully tightened - check. Blade arm or bracket bent out of place - check.

Problem: Wiper does not clean the screen properly.

Possible Cause	Solutions
Blade not in contact with screen.	Blade or arm bent - inspect and replace. Arm pivots seized due to corrosion - replace. Heaters ineffective allowing ice build up.
Weak springs on blade arm.	Stronger springs may be required. Contact Agent/Distributor
Broken springs on blade arm.	Investigate reason of failure and replace. Springs are good down to -40°C.
Blade rubber missing or damaged.	Maintenance item. Replace as required.

Problem: Wiper does not park correctly

Possible Cause	Solution
Park Sensor failed.	Check reed sensor action, will need tester (meter).
Park Sensor Actuator missing.	Check magnet/spacer arrangement on carriage.

Problem: If fitted, heater does not become warm when switched on

Possible Cause	Solutions
Fuse blown or circuit breaker tripped (if fitted).	Check for short-circuited heater, will need tester (meter). Check for wiring damage or loose wires. Check connections are good.
Heater failed.	Check for continuity, will need tester (meter).
Earth leakage circuit breaker trips.	It is common for earth leakage to rise if a heater has not been used for a while - if possible allow heater the warm up so to dry out. The heater's water seal or cable may be damaged allowing ingress of water - check and replace.
No power.	Check Controller.

Problem: If fitted, little or no washer water comes out when button pressed.

Possible Cause	Solution
Pump or supply pressure too low.	Check Ship's water supply, or pump for output pressure.
On reservoir systems, empty.	Check - refill.
Water control valve faulty or not operating.	Check solenoid valve continuity. Replace if open circuit.
Supply lines or jets blocked.	Try air purge, if available. Dismantle and flush pipes.
Water frozen.	Switch on heaters.

TYPE C WIPER MAINTENANCE

Wynn products have been proven over many years to perform well under the harshest condition of use. To maintain their performance the following schedule is recommended:

TOOLS REQUIRED:

- I. 4MM ALLEN KEY
- II. 5MM ALLEN KEY
- III. 6MM ALLEN KEY
- IV. 6MM SOCKET
- V. 8MM SPANNER
- VI. 10MM SPANNER
- VII. 10MM SOCKET
- VIII. 11MM SPANNER
- IX. 3MM FLAT BLADE SCREWDRIVER
- X. NO2 CROSS POINT SCREWDRIVER

Every 6 Months

DC motors only

1. Inspect the motor brushes. Remove motor end cover. Prevent brushes from running down to less than 6mm height in service. Brushes can be lifted out of their holder after lifting off the springs. Replace brushes back into same holder and in the same orientation. Ensure that the brush 'pig tails' is free and that the springs are correctly replaced.
2. When replacing brushes, carefully clear out any residual carbon dust from the motor.



WARNING: DO NOT INHALE THE CARBON DUST.

3. Inspect the motor commutator – it should still be bright. If it is blackened the motor should be replaced or serviced. This can be done with light cleaning with 'flour' paper, but not 'emery' paper.

Every 12 Months

1. Check condition of the Articulated/Rigid Wiper Blade. Replace if necessary.
2. Check Heaters if fitted. If these have not been used for some time, then leave them on for approximately 2 hours.

NOTE: If not used for long periods, some mineral insulated heaters will take up moisture and begin to show current leakage to ground. By running them for the stated time this process can be reversed and the insulation returned to near infinity values. When dry, insulation resistance is > 100 M ohm at 500V.

3. Check the drive belt for deterioration. Replace if necessary.
4. Check carriage is smooth and all guide rollers are free to rotate. Inspect 'tyres' on the guide rollers for splitting / perishing. Replace complete roller if necessary.



Caution: Guide rollers have an integral dry bearing and **MUST NOT** be oil or grease lubricated.

5. Check for free movement of idler pulleys in response to belt tension. Lubricate as necessary with water resistant grease.

6. Ensure free movement of drive pulley. Replace if damaged or when showing signs of excessive wear.

NOTE: The drive pulley is jig assembled and should not be dismantled.

7. Check for free blade arm spring movement. Dismantle, re-grease or replace if necessary.

TYPE C WIPER INSPECTION / RENEWAL OF PARTS



WARNING: To ensure health & safety, remove power from the control unit, before working on any parts of the wiper either inside or outside.

TOOLS REQUIRED:

- I. 4MM ALLEN KEY
- II. 5MM ALLEN KEY
- III. 6MM ALLEN KEY
- IV. 6MM SOCKET
- V. 8MM SPANNER
- VI. 10MM SPANNER
- VII. 10MM SOCKET
- VIII. 11MM SPANNER
- IX. 3MM FLAT BLADE SCREWDRIVER
- X. NO2 CROSS POINT SCREWDRIVER

Blade Replacement

1. Loosen the 2 x 8mm nuts on the blade attachment clip.
2. Slide the blade attachment clip and blade assembly off the wiper arm.
3. Re-assembly is reversal of above instructions.

Arm Replacement

1. If Heaters are fitted disconnect from terminals to allow the cover to be removed from the wiper.

OUTSIDE

2. Remove any pipework fittings / blanking plugs from both ends of the wiper.
3. Slacken cable glands and withdraw heater cable from bulkhead.
4. Remove the 2 x M8 Cap head bolts at each end of the cover and set aside.
5. Carefully remove the cover and set aside.
6. Remove the 4 x M6x10mm screws securing the arm to the carriage plate. The arm and blade assembly is now free from the wiper, set both assembly and fasteners aside.
7. Slacken the blade clip bolts and remove blade. Set aside for reuse.
8. Re-assembly is reversal of above instructions.

Drive Belt

1. If Heaters are fitted disconnect from terminals to allow the cover to be removed from the wiper.

OUTSIDE

2. Remove any pipework fittings from both ends of the wiper.
3. Slacken cable glands and withdraw heater cable from bulkhead.
4. Remove the 2 x M8 Cap head bolts at each end of the cover and set aside.

5. Carefully remove the cover and set aside.
6. Remove the 4 x M6x10mm screws securing the arm to the carriage plate. The arm and blade assembly is now free from the wiper, set both assembly and fasteners aside.
7. Slip the belt off the spring-loaded pulleys then slide the carriage/belt assembly out of the end of the case at the idler pulley end. Note: The assembly can be removed from the drive pulley end, but the park sensor will then need to be detached first (where fitted).
8. In multi wiper installations, if there is insufficient space between adjacent wipers to remove the carriage, then it will be necessary to draw the carriage / belt assembly through adjacent wiper cases, detaching park sensors where necessary.
9. Inspect the drive belt and replace if damaged or worn. To detach the drive belt, note how the parts are assembled, then undo the 2 small nuts securing the belt to the clip.
10. Fit a new belt. Spare belts are supplied with nuts and clip plate. Refit and tighten nuts to the same height as the original and secure with Loctite thread lock (or similar).
11. Fit the carriage & belt assembly back into the casing and slip the belt onto the drive & idler pulleys.
12. Move the carriage by hand and ensure that it travels the full stroke length freely and without any obstruction. (Motion will feel restricted because the motor is being rotated if in doubt discount the motor). Refit the blade assembly with special screws removed.
13. Refit the front cover and secure with the 2 off M8 cover bolts. Reconnect any pipework fittings removed in para 2, and heater cable if removed at para 1.

Guide Rollers

1. Follow the Drive Belt renewal instructions 1 to 7 above.
2. Remove the M5 Nylock nut & flat washer securing the guide roller and remove the guide roller. M5 Nylock nuts & flat washers supplied with set of 8 guide rollers.
3. Fit the new guide roller and secure with the M5 Nylock nut & flat washer. Ensure that M5 Nylock nut is tightened firmly.
4. Re-assembly is reversal of above instructions.



Caution: Guide rollers have an integral dry bearing and **MUST NOT** be oil or grease lubricated.

Drive Shaft and Pulley Assembly

1. Slacken the clamping bolt securing the motor to the drive shaft assembly, withdraw the motor from the shaft and set aside ensuring the black coupling is kept with the motor.
2. Follow the Drive Belt renewal instructions 1 to 6 above.
3. Remove the 2 screws securing the park switch to the wiper case, withdrawing the cable through the slot in the case. Keep screws and fittings safe.
4. Dismount wiper from bulkhead and set aside fixings.

5. Unbolt drive shaft and pulley assembly from the main body of the wiper and set the fixings aside.
6. Withdraw the assembly from the wiper body and discard.
7. Insert the new assembly onto the body. Re-assembly is reversal of the above instructions and in accordance with the standard wiper installation instructions elsewhere in the manual.

Wiper Motor Replacement

1. Disconnect motor wiring and make a note of the connections.
2. Loosen motor pinch bolt and remove motor.
3. Ensure new motor has a rubber coupling fitted to the dog gear. Line up motor dog gear with drive shaft dog gear and slide motor into position. Tighten pinch bolt.
4. Wire to motor terminal connections.

Type C Common Cover Wiper Spares List

Ident	Description	Quantity	Part Number
1a	Flat Blade Assembly	1	FB WSL ***
1b	Articulated Blade Assembly	1	SP1279-553-***
1c	Heavy Duty Dual Blade Assembly	1	805201-***
2	Blade Attachment Clip (14mm Articulated Blade & FB)	1	SP1279-493
	Blade Attachment Clip (20mm Articulated Blade)	1	SP1279-532
3	Blade Arm Assembly	1	CC**#R
4	Blade Arm Torsion Spring	1	SP1292-221
4a	Arm Spring(s) - where fitted at top of arm ‡	A/R	1279-157
5	Blade Arm Pivot Blocks	1 Kit/arm	SP1279-486-#.#
6	Arm Attachment Screws	Set of 4	SP1588-488
7	Carriage Plate Assembly – Single Blade	1	SP1588-005-M
	Carriage Plate Assembly – Twin Blade	1	SP1588-312-***
8	8 Guide Rollers C/W Nuts	Set of 8	SP1588-117
	Guide Roller Assy	1	SP1588-006
10	Connecting Rod Assembly – Single	1	SP1588-474
	Connecting Rod Assembly – Twin Blade	1	SP1588-474T
11	Vee-Belt	1	SP1279-106-###
12	Idler Pulley Assembly c/w Springs (Single Blade)	1	SP1588-452
	Idler Pulley Assembly c/w Spring (Twin Blade)	1	SP1588-452T
13	Idler Pulley Tension Spring (Single Blade)	Set of 2	SP1279-157
	Idler Pulley Tension Spring (Twin Blade)	Set of 2	SP1279-496
14	Idler Pulley Guide Assembly	1	SP1588-490
15	Drive Shaft and Pulley Assembly - 84mm Std	1	SP1588-009-117
	Drive Shaft and Pulley Assembly - 140mm	1	SP1588-009-173
	Drive Shaft and Pulley Assembly - 200mm	1	SP1588-009-233
	Drive Shaft and Pulley Assembly - 220mm	1	SP1588-009-253

Ident	Description	Quantity	Part Number
	Drive Shaft and Pulley Assembly - 240mm	1	SP1588-009-273
	Drive Shaft and Pulley Assembly - 310mm	1	SP1588-009-310A
	Drive Shaft and Pulley Assembly - 35mm	1	SP1642-003
	Gas Tight Drive Shaft and Pulley Assembly Std	1	SP1588-030-117
	Gas Tight Drive Shaft and Pulley Assembly 140mm	1	SP1588-030-173
	Gas Tight Drive Shaft and Pulley Assembly 200mm	1	SP1588-030-233
17a	Parvalux 61, 115V AC, 50/60Hz, 3-Ph, 2 Speed	1	SP1490-000GA61
	Parvalux 62D+, 230V AC, 50/60Hz, 3-Ph, 2 Speed	1	SP1490-000GA62D
	Parvalux 64-T, 230V AC, 50/60Hz, 1-Ph, 1 Speed	1	SP1490-000GA64
	Parvalux 64L, 230V AC, 50/60Hz, 1-Ph, Low Speed	1	SP1490-000GA64L
	Parvalux 65, 115V AC, 50/60Hz, 1-Ph, 1 Speed	1	SP1490-000GA65
	Parvalux 65L, 115V AC, 50/60Hz, 1-Ph, Low Speed	1	SP1490-000GA65L
	Parvalux 81, 115V AC, 3 Speed	1	SP1490-000GA81
	Parvalux 82, 220V AC, 3 Speed	1	SP1490-000GA82
17c	PM3M 24Vdc Motor	1	SP1279-558-24
	PM3M 24Vdc Motor Slow Speed	1	SP1279-558L-24
18	Front Cover - Less Heater	1	See calculator 1681-161
19	Heater - Single Wiper	1	SP1588010\$\$\$^^
19a	Heater Clip	A/R	SP1588-056
20	Spray Tube Assembly	1	SP1588-418
21	Cover Bolts	each	zA0008-090S
22	End Cover Left Hand	each	SP1588-058L*
	End Cover Right Hand	each	SP1588-058R*
23a	Fixing Screw	6	zP00012S-1.0S
23b	Blanking Plug	2	1588-062
23c	Metric Pipe Fitting	1	1588-038
23d	Tubing Plug	1	1588-037

Ident	Description	Quantity	Part Number
24	Self-Parking Assembly (Reed sw and magnet) 2m	1	SP1588-012-1
	Self-Parking Assembly (Reed sw only) 2m	1	SP1587-034-1
25	Main Frame	1	See calculator 1681-161
26	Motor Housing Nut	each	10015100
27	Motor Housing Washer	each	10025306B
28	Motor Housing Bolt	each	zA0006-020S
29	Pivot Block Securing Nut	2	zNL0.25F-S
not shown	Wash Fittings SLW Single	1	SP1588-672
not shown	Wash Fittings SLW Twin	1	SP1588-673
not shown	Wash Fittings SLW Single Long	1	SP1588-674
not shown	Drive Coupling – fitted inside Drive Shaft	1	SP1279-250
not shown	L050 Rubber Spider – fitted to Drive Coupling	1	SP1279-252
not shown	Sealing Grommet – fitted around Drive Shaft	1	SP1279-137
not shown	Sealing Grommet Spacer– fitted around Drive Shaft	1	SP1588-745

*** In the Part Number means length in mm.

**# In the Part Number means length in cm and arm spring pressure code.

In the Part Number means spring pressure in lb/ft. This is determined by Wynn according to arm and blade dimensions, together with any window rake angle from the vertical. This value can also be obtained from the original order documentation. See Wynn Agent for more details.

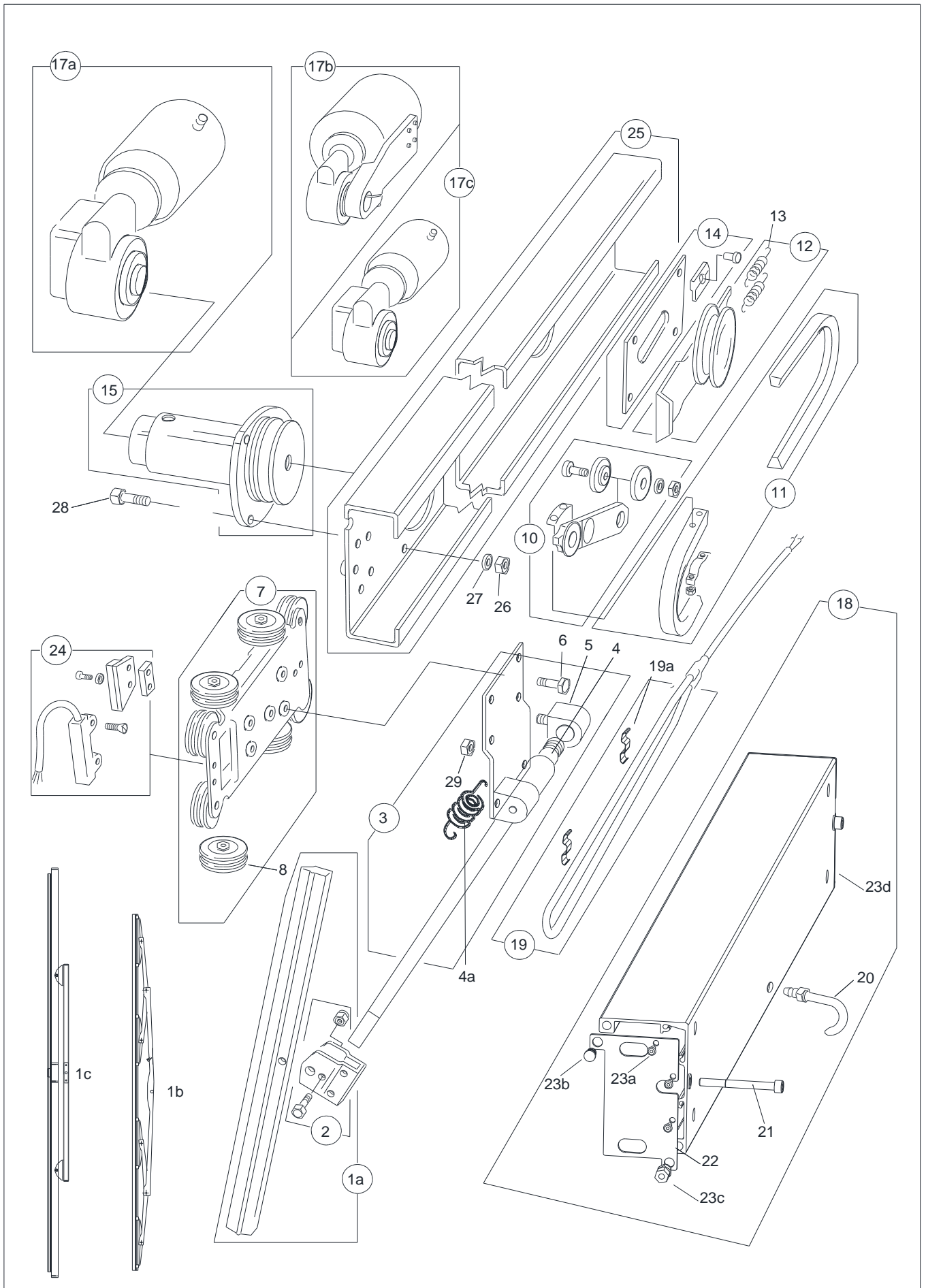
Belt length (written on belt as A####) in Inches.

‡ Where required, extra spring pressure is obtained by the addition of 1 or 2 springs to the wiper arm. Where fitted, order 1 or 2 as required. Contact Wynn Agent for more details.

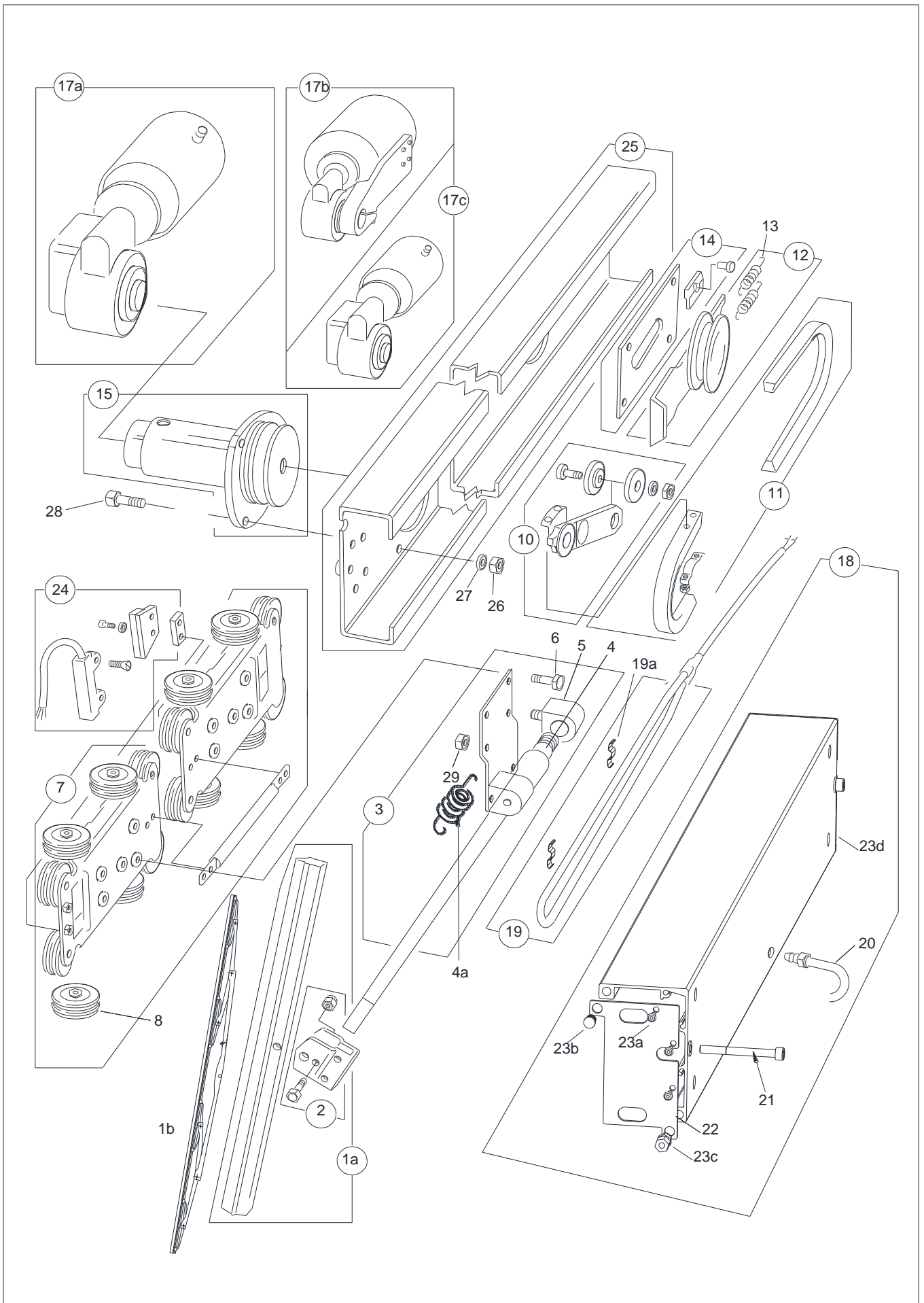
\$\$\$ Where \$\$\$ is voltage (220,115 or 024)

^^ Where ^ is heater length code.

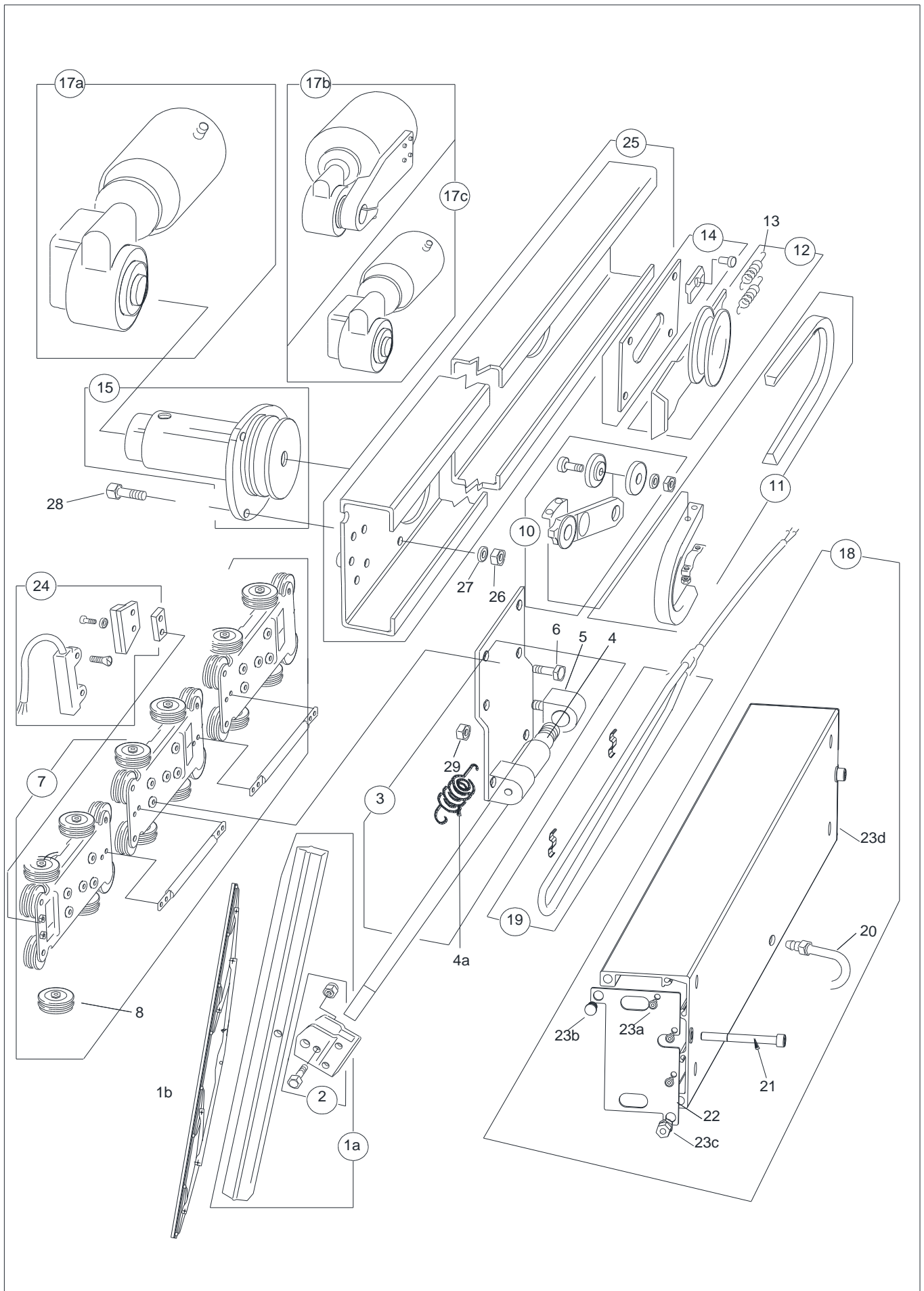
Type C Common Cover Single Spare Parts Drawing



Type C Common Cover Twin Spare Parts Drawing (Short)



Type C Common Cover Twin Spare Parts Drawing (Long)



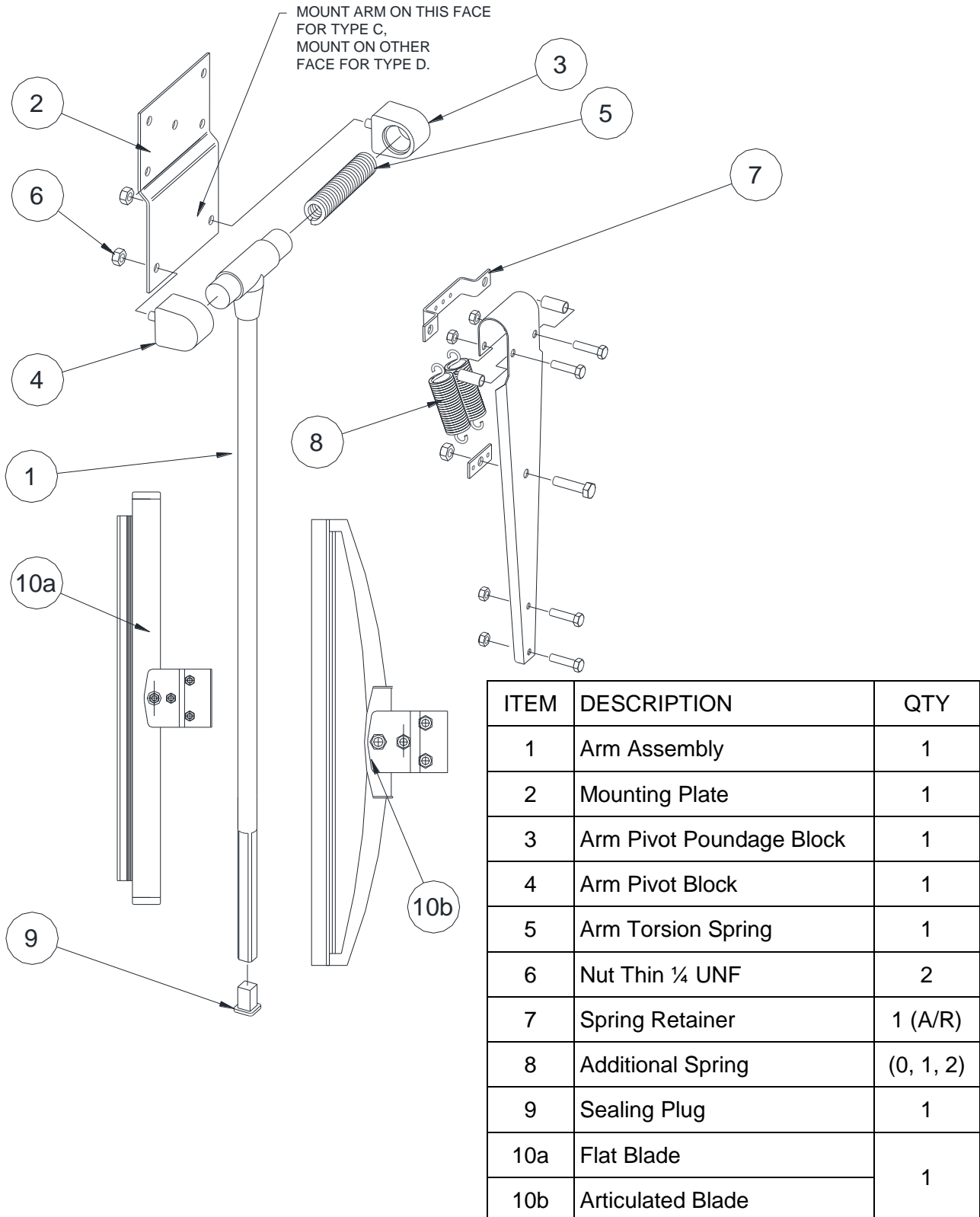
SLW Wiper Arm

The wiper arm is manufactured from stainless steel.

The wiper arm is shown below. One wiper arm assembly is used on a single bladed wiper, two wiper arm assemblies on a twin bladed wiper and three wiper arm assemblies on a triple bladed wiper unit.

The wiper arm assembly mounts on to the wiper assembly carriage plate. The wiper arm is secured to the carriage plate via four 10mm long mounting bolts.

The blade is secured to the arm assembly using the blade clip arrangement fitted to the wiper blade.



QUICK FIT SLW WIPER ARM INSTALLATION

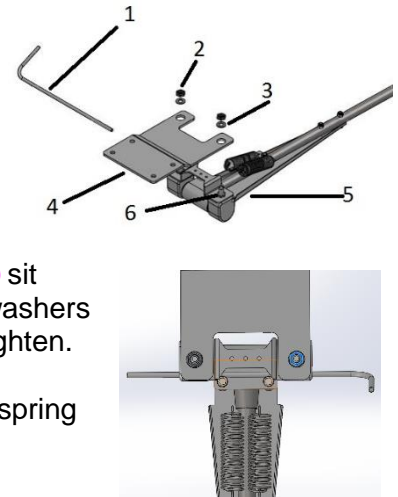


CAUTION: Ensure that the correct wiper, blade and arms are selected for each window. The wiper arm should not be installed/removed without the spring retaining pin fitted.

Installation

NOTE: The wiper unit should be supplied with the arm mounting plate (4) already fitted. If it is not fitted, remove 2 x ¼ UNF Thin Nuts (2) and 2 x M6 washers (3) from the pivot block threads and remove the wiper arm sub assembly (5) from the arm mounting plate (4). Fit the arm mounting plate (4) to the wiper unit before installing the wiper unit.

1. Remove 2 x ¼ UNF Thin Nuts (2) and 2 x M6 washers (3) from the pivot block threads.
2. Fit the wiper blade to the wiper arm sub assembly (5), ensuring that the captive end of the wiper is at the top.
3. Fit the wiper arm sub assembly (5) to the arm mounting plate (4) ensuring that the wiper arm sub assembly pivot block nuts (6) sit inside the holes in the arm mounting plate (4). Refit the 2 x M6 washers (3) and 2 x ¼ UNF Thin Nuts (2) to the pivot block threads and tighten.
4. Gently lift the wiper arm away from the window and remove the spring retaining pin (1). Keep safe for future use.



Arm Removal/Replacement

Removal

1. Gently lift the wiper arm away from the window and insert the spring retaining pin (1).
2. Remove 2 x ¼ UNF Thin Nuts (2) and 2 x M6 washers (3) from the pivot block threads. Keep safe for future use.
3. Remove the wiper arm sub assembly (5) from the arm mounting plate (4).

Replacement

1. Fit the wiper arm sub assembly (5) to the arm mounting plate (4) ensuring that the wiper arm sub assembly pivot block nuts (6) sit inside the holes in the arm mounting plate (4). Refit the 2 x M6 washers (3) and 2 x ¼ UNF Thin Nuts (2) to the pivot block threads and tighten.
2. Gently lift the wiper arm away from the window and remove the spring retaining pin (1). Keep safe for future use.

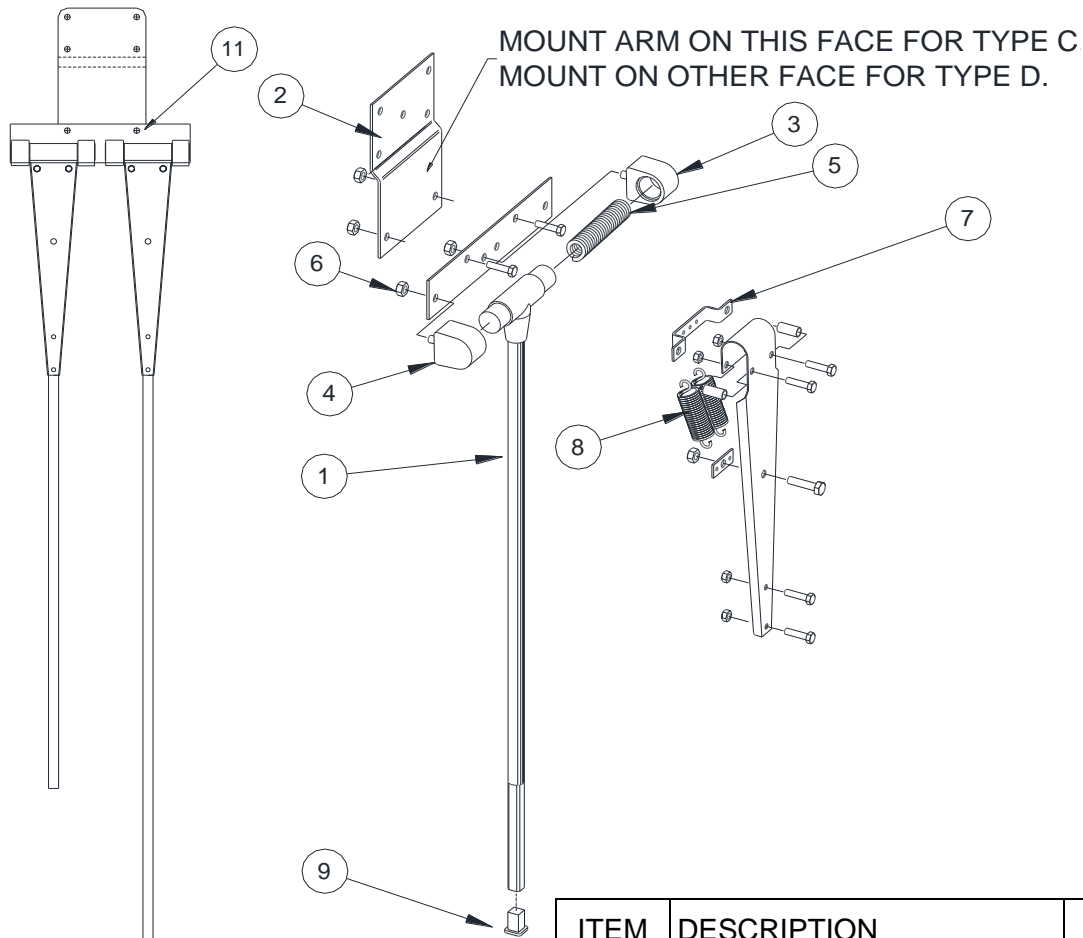
SLW Double Wiper Arm Assembly

The wiper arm is manufactured from stainless steel.

The wiper arm is shown below. One wiper arm assembly is used on a single bladed wiper, two wiper arm assemblies on a twin bladed wiper.

The double wiper arm mounting plate is secured to the wiper arm mounting plate with two bolts, washers and nuts. The complete wiper arm assembly mounts on to the wiper assembly carriage plate. The wiper arm is secured to the carriage plate via four 10mm long mounting bolts.

The blade is secured to the arm assembly using the blade clip arrangement fitted to the wiper blade.



VIEWED FROM OUTSIDE

ITEM	DESCRIPTION	QTY
1	Arm Assembly	2
2	Mounting Plate	1
3	Arm Pivot Poundage Block	2
4	Arm Pivot Block	2
5	Arm Torsion Spring	2
6	Nut Thin ¼ UNF	4
7	Spring Retainer	2(A/R)
8	Additional Spring (per arm)	(0, 1, 2)
9	Sealing Plug	2
11	Double Arm Mtg Plate	2

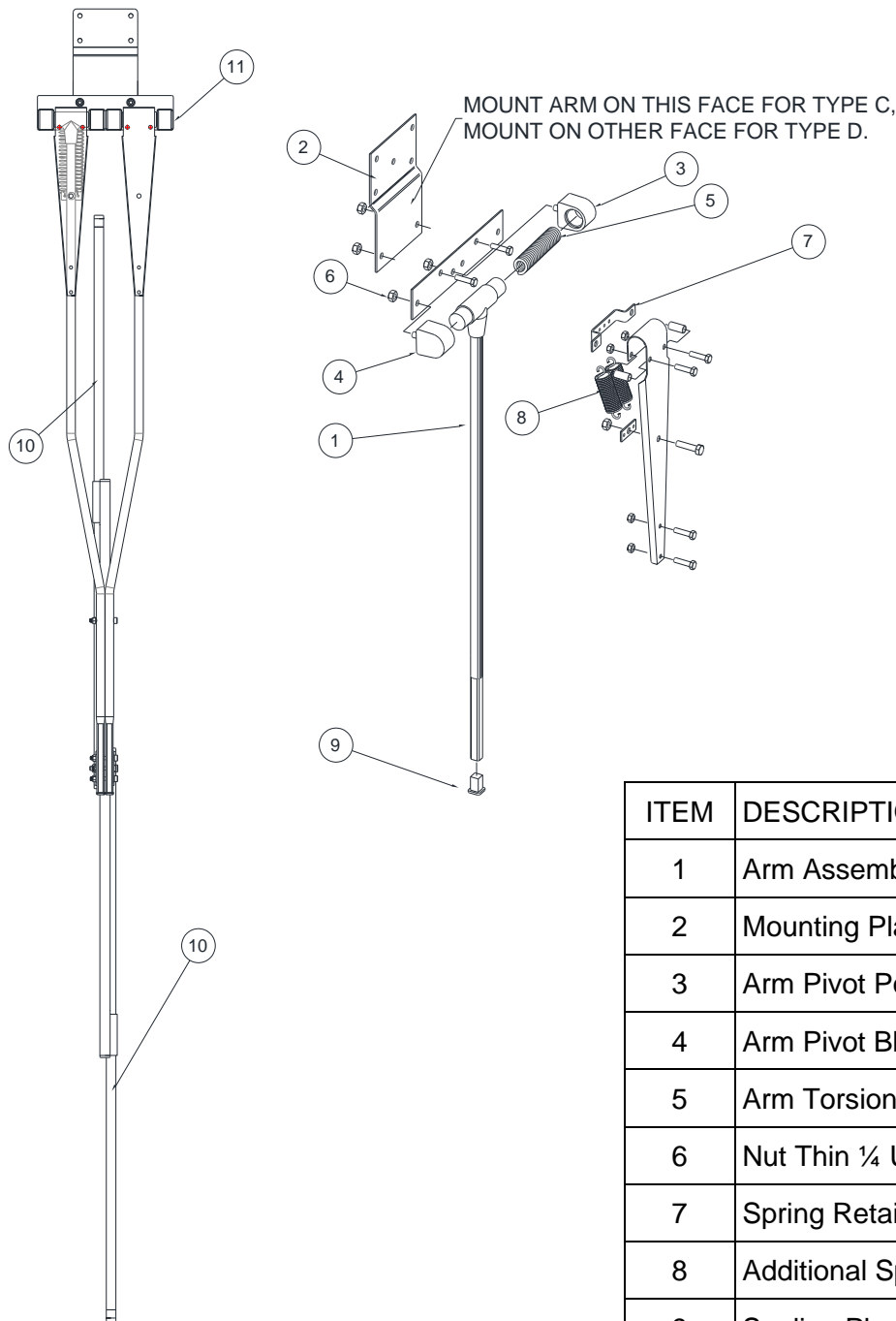
SLW Heavy Duty Wiper Arm Assembly – 600-950mm

The wiper arm is manufactured from stainless steel.

The wiper arm is shown below. One wiper arm assembly is used on a single bladed wiper.

The heavy duty wiper arm mounting plate is secured to the wiper arm mounting plate with two bolts, washers and nuts. The complete wiper arm assembly mounts on to the wiper assembly carriage plate. The wiper arm is secured to the carriage plate via four 10mm long mounting bolts.

The blade is secured to the arm assembly using the blade clip arrangement fitted to the wiper blade.



OUTSIDE LOOKING IN

ITEM	DESCRIPTION	QTY
1	Arm Assembly	2
2	Mounting Plate	1
3	Arm Pivot Poundage Block	2
4	Arm Pivot Block	2
5	Arm Torsion Spring	2
6	Nut Thin ¼ UNF	4
7	Spring Retainer	2
8	Additional Spring (per arm)	2
9	Sealing Plug	2
10	Flat Blade	2
11	Double Arm Mtg Plate	2

SLW Heavy Duty Wiper Arm Assembly – 1000-1150mm

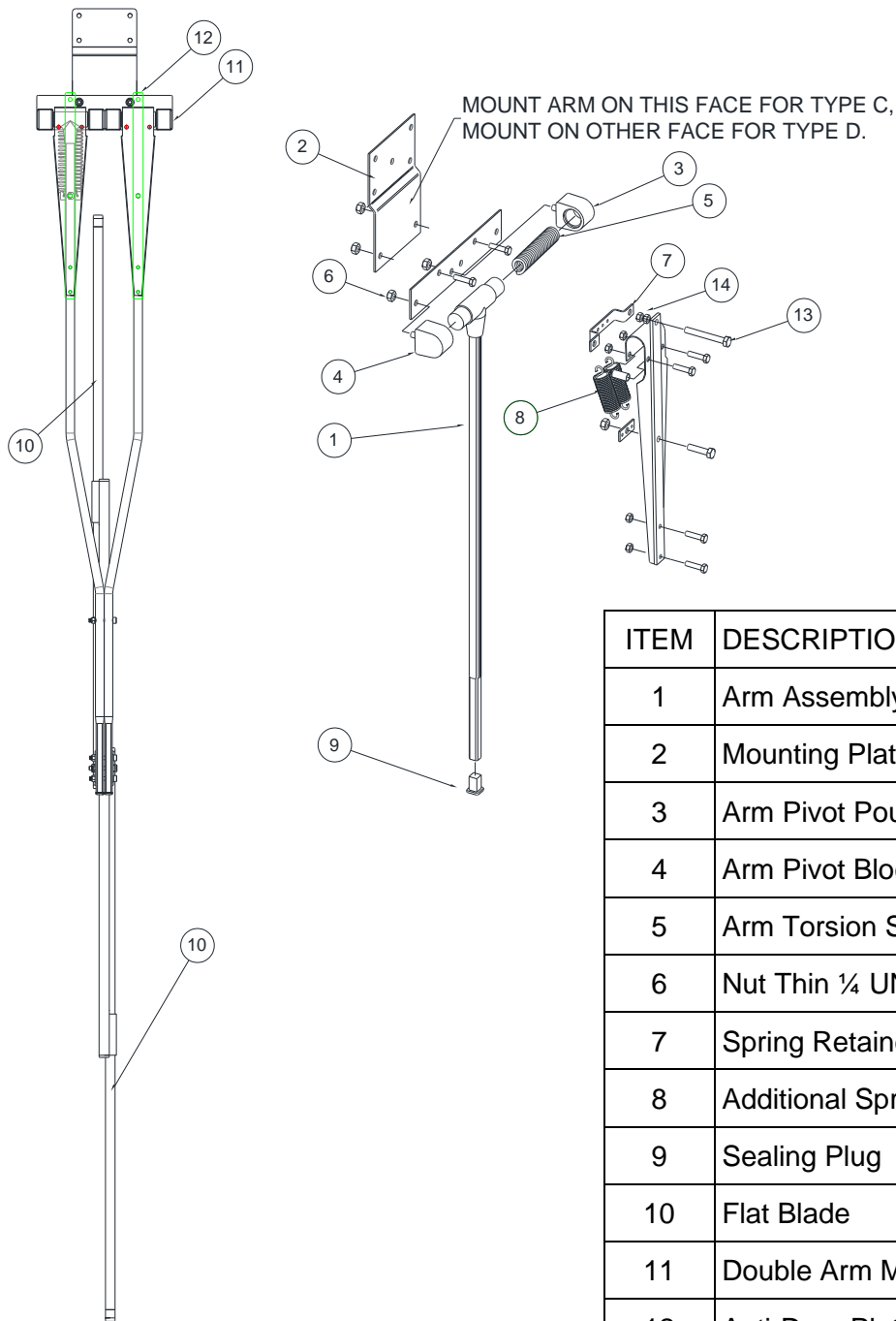
The wiper arm is manufactured from stainless steel.

The wiper arm is shown below. One wiper arm assembly is used on a single bladed wiper.

The heavy duty wiper arm mounting plate is secured to the wiper arm mounting plate with two bolts, washers and nuts. The complete wiper arm assembly mounts on to the wiper assembly carriage plate. The wiper arm is secured to the carriage plate via four 10mm long mounting bolts.

The blade is secured to the arm assembly using the blade clip arrangement fitted to the wiper blade.

The arm is fitted with an Anti-Drop plate. This can be adjusted to provide addition pressure to the wiper blade.



OUTSIDE LOOKING IN

ITEM	DESCRIPTION	QTY
1	Arm Assembly	2
2	Mounting Plate	1
3	Arm Pivot Poundage Block	2
4	Arm Pivot Block	2
5	Arm Torsion Spring	2
6	Nut Thin ¼ UNF	4
7	Spring Retainer	2
8	Additional Spring (per arm)	3
9	Sealing Plug	2
10	Flat Blade	2
11	Double Arm Mtg Plate	2
12	Anti-Drop Plate	2
13	Adjustment Bolt	2
14	Lock Nuts	4

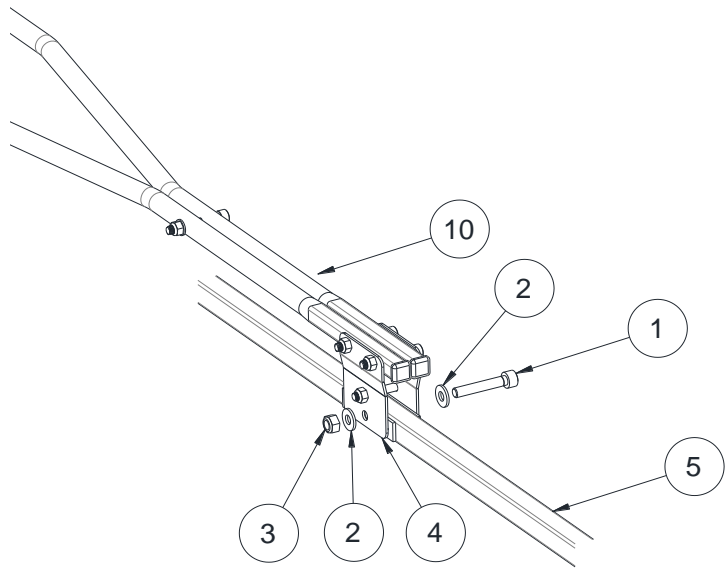
FITTING THE WIPER BLADE CARRIER

The wiper blades should be changed every 12 months but this is dependent on use and operating conditions

Ref Figure – Dual Blade Clip

1. Remove one M6 blade retaining bolt (1), two M6 flat washers (2), and M6 Nylock nut (3), from blade clip on double wiper arm assy (10).
2. Place dual blade carrier assy (5), into blade clip on Arm (10).
3. Ensure that all fixing holes align.
4. Secure in place with one M6 blade retaining bolt (1), two M6 flat washers (2), and M6 Nylock nut (3).

Figure – Dual Blade Clip



IMPORTANT

DO NOT over tighten blade carrier retaining bolt and nut, as blade carrier is required to pivot on glass.

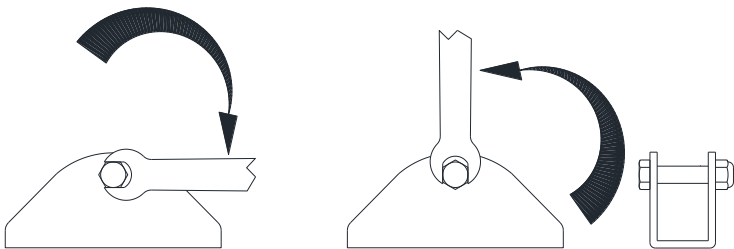
Ref Figure – Nut Tightening

5. Secure nut until tight – then 1/4 turn back

Figure – Nut Tightening

Secure nut
until tight

1/4 turn back

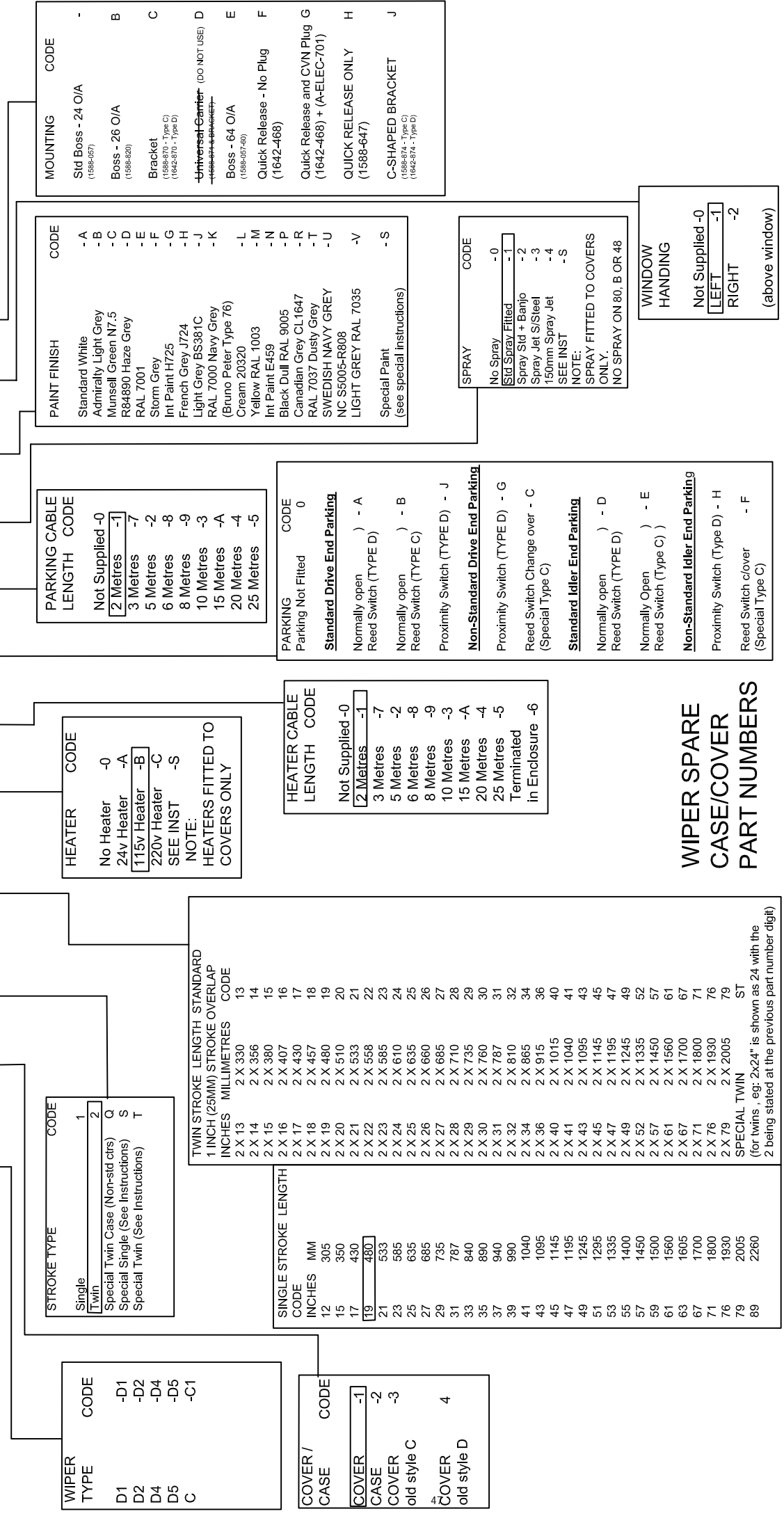


NOTE

Pictorial representation only, May not be exact to supplied arm

SPARES ORDERING

EXAMPLE NUMBER D 5 1 1 1 1 1 1 9 B 1 1 A 1 1 A 1 1 - * * * * * * * * * * * * * * * * * *



WIPER TYPE

CODE	D1	D2	D4	D5	C
DESCRIPTION	-D1	-D2	-D4	-D5	-C1

COVER / CASE

COVER / CASE	COVER -1	CASE -2	CASE -3	CASE old style C	CASE old style D
CODE	-1	-2	-3		4

STROKE TYPE

CODE	1	2	Q	S	T
DESCRIPTION	Single	Twin	Special Twin Case (Non-std ctrs)	Special Single (See Instructions)	Special Twin (See Instructions)

TWIN STROKE LENGTH STANDARD 1 INCH (25MM) STROKE OVERLAP

INCHES	2 X 13	2 X 14	2 X 15	2 X 16	2 X 17	2 X 18	2 X 19	2 X 20	2 X 21	2 X 22	2 X 23	2 X 24	2 X 25	2 X 26	2 X 27	2 X 28	2 X 29	2 X 30	2 X 31	2 X 32	2 X 34	2 X 36	2 X 40	2 X 41	2 X 43	2 X 45	2 X 47	2 X 49	2 X 52	2 X 57	2 X 61	2 X 67	2 X 71	2 X 76	2 X 79	2 X 89
MILLIMETRES	2 X 330	2 X 356	2 X 380	2 X 407	2 X 430	2 X 457	2 X 480	2 X 510	2 X 533	2 X 558	2 X 585	2 X 610	2 X 635	2 X 660	2 X 685	2 X 710	2 X 735	2 X 760	2 X 787	2 X 810	2 X 865	2 X 915	2 X 1015	2 X 1040	2 X 1095	2 X 1145	2 X 1195	2 X 1245	2 X 1335	2 X 1450	2 X 1560	2 X 1700	2 X 1800	2 X 1930	2 X 2005	ST

PARKING CABLE LENGTH

CODE	Not Supplied	0	1	2	3	4	5
LENGTH	Not Supplied	2 Metres	3 Metres	5 Metres	6 Metres	8 Metres	10 Metres
DESCRIPTION	Not Supplied	2 Metres	3 Metres	5 Metres	6 Metres	8 Metres	10 Metres

PAINT FINISH

CODE	-A	-B	-C	-D	-E	-F	-G	-H	-J	-K	-L	-M	-N	-P	-R	-T	-U	-V	-S		
DESCRIPTION	Standard White	Admiralty Light Grey	Munsell Green N7.5	R84890 Haze Grey	RAL 7001	Storm Grey	Int Paint H725	French Grey J724	Light Grey BS381C	RAL 7000 Navy Grey	(Bruno Peter Type 76)	Cream 20320	Yellow RAL 1003	Int Paint E459	Black Dull RAL 9005	Canadian Grey CL1647	RAL 7037 Dusky Grey	SWEDISH NAVY GREY	NC S5005-R808	LIGHT GREY RAL 7035	Special Paint (see special instructions)

PARKING

CODE	0	A	B	J	D	G	C	D	E	F	
DESCRIPTION	Parking Not Fitted	Normally open Reed Switch (TYPE D)	Normally open Reed Switch (TYPE C)	Proximity Switch (TYPE D)	Non-Standard Drive End Parking	Proximity Switch (TYPE D)	Reed Switch Change over (Special Type C)	Standard Idler End Parking	Normally open Reed Switch (TYPE D)	Normally Open Reed Switch (Type C)	Non-Standard Idler End Parking

WINDOW HANDING

CODE	-1	-2
DESCRIPTION	LEFT	RIGHT

Not Supplied - 0

(above window)

WIPER SPARE CASE/COVER PART NUMBERS

CAD FILENAME + DIRECTORY M:\DRAW\1681\1681-161.DWG													
3rd ANGLE	PRO.		30	s1702	17.10.11	40	S21993	15.12.16	35	S7760	21.08.13	MOD STATUS	
TOLERANCES UNLESS OTHERWISE STATED DECIMAL DIMS. TO 2 PLACES ± 0.1mm. NO DECIMAL PLACES ± 0.5mm ANGLES ± 1°													
MAT'L:-	ISS.	DIN	DATE	DRAWN:-	ISS.	DIN	DATE	CHKD:-	ISS.	DIN	DATE	CHANGED:-	
	41	S23510	03.05.17	36	S11968	16.10.2014	31	S2641	15.02.12				
	29	S618	10.05.11	39	S21025	14.12.16	34	S6646	18.04.13				
	28	S448	19.04.11	38	S21726	24.11.16	33	s6249	07.03.13				
	27	11-134	08.03.11	37	S15178	30.07.2015	32	s2930	16.03.12				

USED ON:

THE COPYRIGHT OF THIS DRAWING IS VESTED IN WYNN MARINE LTD. AND MUST NOT BE REPRODUCED WITHOUT WRITTEN PERMISSION OF THE COMPANY OR USED FOR ANY PURPOSE OTHER THAN THAT FOR WHICH IT HAS BEEN SUPPLIED.

MARINE LIMITED
CHELTENHAM ENGLAND

TITLE:- STRAIGHT LINE WIPER COVER/CASE SPARES PART NUMBER OPTIONS

DRAWING NO. 1681-161 SHEET 2 OF 2

DOCUMENTATION

Whilst every effort is made to provide accurate information in good faith, no responsibility can be accepted by Wynn for inaccuracies and Wynn reserves the right to alter and amend specifications and designs without prior notice in line with our policy of continued improvement.

Spares Parts

To enable technical troubleshooting and ordering of spare parts, this manual should be kept in a safe place on board. It is also advisable to keep one set of spare parts on board for emergency use. Please contact Wynn directly or your local distributor / service centre for all order requirements.

Maintenance Schedules

Plan your maintenance work according to the schedule in this manual.

Our Commitment

We are committed to a 10 year product support programme. This ensures that any spare part will be available for any wiper at least 10 years after its purchase. It is strongly recommended that only genuine replacement parts manufactured by WYNN be used. This will guarantee that only suitable materials have been used and will ensure interchangeability of parts.

Quality and Testing

We are committed to the principles of Total Quality Management, ISO 9000. We manufacture our range of marine products to the highest standard and quality. We therefore maintain an ongoing schedule of product improvement and testing. To help us sustain such standards we maintain a salt-water test rig on which our products are taken, at random from the production line, and subjected to 3,000 hour continuous testing. We are sure you will receive many years trouble-free service from your Wynn product and hope you find this information pack comprehensive.

Guarantee

All Wynn equipment is tested before despatch from our works. The Windscreen Wiper System supplied has a 1 year warranty period provided the installation of the system and the subsequent maintenance is in accordance with the installation/maintenance instructions.

We cannot accept any responsibility for the installation of equipment, or damage to the equipment during installation, or normal wear and tear. The guarantee is negated if the equipment is not installed strictly observing the instructions set out in this manual, or not maintained as specified.

The Wiper System is very reliable but to ensure its continued smooth running we recommend that the following guidelines are adhered to:-

Monthly

- Check for wear on all parts subject to friction
- Visual inspection should be made of the blades to ensure that they are still in good condition and replace as soon as there are signs of wear or damage

Annually

- It is recommended that the blades are changed every 12 months

After the Wiper System has been operating in severe weather conditions it is advisable to thoroughly check the unit for signs of wear or damage.

This warranty excludes the wiper blades which are a consumable item and any replacements that are detailed in the manual as part of any regular maintenance requirement.

This guarantee is expressly in lieu of all other guarantees expressed or implied and of all other obligations of liabilities on our part, and we neither assume nor authorise any other person to assume for us any other liability in connection with the sale of our equipment. Faulty equipment must be returned, carriage paid, to our works for examination. Any legal action must be settled in the English courts under English law.

THIS PAGE INTENTIONALLY LEFT BLANK

THIS PAGE INTENTIONALLY LEFT BLANK

THIS PAGE INTENTIONALLY LEFT BLANK

A worldwide network of agents supports Wynn's Marine product range. For details of the nearest Wynn agent please contact our Head Office. Wynn Agents operate in the following countries.

Algeria, Argentina, Australia, Brazil, Bulgaria, Canada, Chile, China, Columbia, Croatia, Denmark, Egypt, Estonia, Finland, France, Germany, Greece, Hong Kong, Iceland, India, Israel, Italy, Japan, Latvia, Lithuania, Netherlands, New Zealand, Norway, Peru, Portugal, Romania, Russia, Singapore, South Africa, South Korea, Sweden, Taiwan, Thailand, Turkey, UAE, U.S.A.



Wynn Marine Ltd
2-4 Merse Road, North Moons Moat, Redditch, Worcestershire B98 9HL
Tel: +44 (0) 1527 61243, Fax: +44 (0) 1527 66836
Email: customerservice@b-hepworth.com, website www.b-hepworth.co.uk