

# Hepworth Newsletter January 2024

---

*"Quality means doing it right when no one is looking."*

1. USNS Robert Ballard (T-AGS-67)Hepworth Fabrications
  2. Hepworth Rail
  3. Tugboats Singapore
  4. Fabrications
  5. Palm Beach Motor Yachts GT60
  6. Norway Orders
  7. Product Focus Monitor Marine: Multi-Purpose Plug-In Connectors:
  8. Brandon Giles
  9. Arctic P
  10. All Electric Harbour
  11. Grace McAllister
- 

## 1. USNS Robert Ballard (T-AGS-67)

A future Pathfinder-class oceanographic survey ship was named after the deep-sea explorer who discovered the final resting place of RMS Titanic, the Navy announced on Wednesday.



The future USNS Robert Ballard (T-AGS-67) was named by Secretary of the Navy Carlos Del Toro named after the retired Navy commander who served as the former director of the Center for Ocean Exploration.

Inmar Systems supplied 13 Single and 4 Twin Type C Straight Line Wipers.

## 2. Hepworth Rail

Adam our After Sales Technician and Phil our Senior Tech Support Engineer, had a successful trip to Alstom Frankfurt for an overhaul/upgrade of the original Frankfurt projects supplied into Bombardier in 2008.



We have built and supplied 20 wiper systems to trial which has so far been a success.

## 3. Tugboats Singapore

Our Distributors in Singapore Aquanautic have been awarded to supply 6 x Type D Straight Line Wipers – 5 per boat. The projects are two 31m ASD Tugboats, two KDZ-6-431 and two KDZ-6-432 Tugboats.



engineered to perform at high speed with unrivalled efficiency. This is the ultimate escape craft!

## 6. Norway Orders

- SERVI have received two orders to Ulstein Verft (NB 320 and 321) each with 28 Wynn Type D and Servi Vision Control.
- Two orders with Vard (NB 973 and 974) each with 36 Wynn Straight-line Type wipers and Servi Vision Control.



- One order to Mundal Båt AS for five Wynn Straight Line Type D wipers with the 6000 Series Control System.
- One order to Tess AS for 6 Wynn Straight Line wipers.

## 4. Fabrications

This month Hepworth Fabrications are making an inaugural delivery to the new Siemens UK manufacturing site in Goole.



The delivery marks the first ever shipment to the brand-new facility where the London Underground Piccadilly-line trains will be built. We look forward to many more successful deliveries to Goole over the coming years.

## 5. Palm Beach Motor Yachts GT60

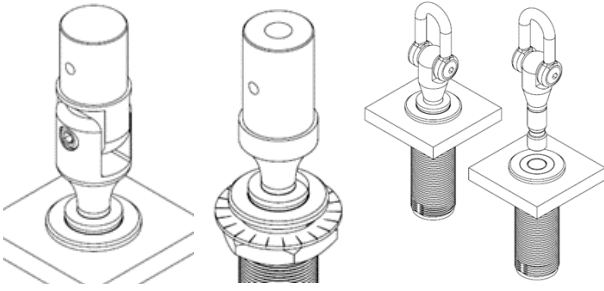
Hepworth's Australian distributor AMI Sales have worked closely with Grand Banks Yachts for many years and have supplied another quality Hepworth Wiper System to the new Palm Beach Motor Yachts GT60 high-performance family cruiser.



The GT60 is the alpha model of the Palm Beach range, a stunning combination of power and beauty. It is

## 7. Product Focus Monitor Marine: Multi-Purpose Plug-In Connector – 2165

- ❖ Probe supplied with shackle fitting as standard.
- ❖ Unobtrusive, flush fitting, watertight and easy to use.
- ❖ Suitable for use with toys, tenders, stanchions, guard rails and awnings.
- ❖ Quick attachment and release mechanism.
- ❖ Available in 1 & 3 Tonne SWL options.
- ❖ Material specification 316 and 17-4ph stainless steel.
- ❖ Alternative probe ends available.
  - Jointed & Stanchion.



## 8. Brandon Giles

The much-needed replacement for the U.S. Coast Guard's long-serving medium endurance cutters (WMEC) took a giant step closer to joining the fleet as the first Offshore Patrol Cutter (OPC) was launched and christened at Eastern Shipbuilding Group (ESG) in Panama City, Fla. on October 27, 2023.



Onboard are 20 1770 wipers with a custom touch screen 8000 Series controls. There is also C350 Clear View Screen, all supplied by Inmar Systems in the USA.

## 9. Arctic P

As part of ongoing service and support Marinair have recently supplied Type D Wiper motors to Motor Yacht Arctic P, a 87.57mtr (287.3Ft) overall length vessel built in Bremerhaven and launched in 1969, outfitted for use in ice conditions and refitted in 2008.



Marinair in New Zealand have, over the years, provided Wynn wiper components, parts and service to the vessel at various ports around the world.

Fitted with two Deutz-MWM diesel engines, the 1610 gross tonne Tonne ship has a cruise speed of 20knots and top speed of 22knots with accommodation for up to 12 Guests and a crew of 25.

## 10. All-electric Harbor Tug eWolf

America's first all-electric tug started sea trials at the end of 2023 and was delivered at the end of January 2024, according to shipowner Crowley.



The electrically-powered eWolf was designed by Crowley's engineering team for a ship-assist application, and was built by Master Boat Builders of Coden, Alabama.

Onboard are Type C Wynn Straight Line Wipers supplied by Inmar Systems.



## 11. Grace McAllister

Washburn & Doughty, East Boothbay, Maine, recently delivered the 93'x38' tug Grace McAllister to New York-based McAllister Towing.



Main propulsion comes from two Caterpillar 3516E Tier 4 engines producing a total of 6,770 hp that power twin Schottel SRP 490 Z-drive units, giving the tug a bollard pull of 85 metric tons.

Onboard are three 1850 wiper systems supplied by Inmar.

### Contact Us:

Hepworth Group  
4 Merse Road, North Moons Moat.  
Redditch, Worcestershire, B98 9HL,  
United Kingdom  
Phone: 01527 61243  
Email: [enquiries@b-hepworth.com](mailto:enquiries@b-hepworth.com)

**Marine** [www.b-hepworth.co.uk](http://www.b-hepworth.co.uk)

**Rail** [www.hepworthrail.co.uk](http://www.hepworthrail.co.uk)

**Monitor Marine** [www.b-hepworth.co.uk/monitor-marine](http://www.b-hepworth.co.uk/monitor-marine)

**Fabrication** [www.hepworthfabrications.co.uk](http://www.hepworthfabrications.co.uk)



Follow us on LinkedIn for the latest news and exclusive content:

<https://www.linkedin.com/company/b-hepworth-&-company-limited/posts/?feedView=all&viewAsMember=true>