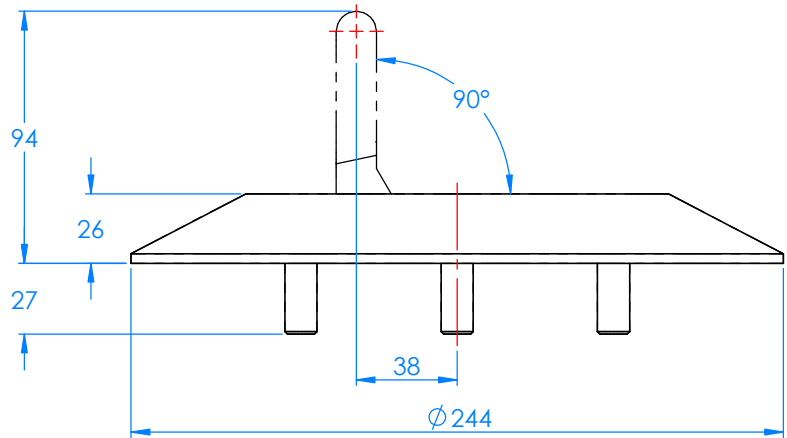
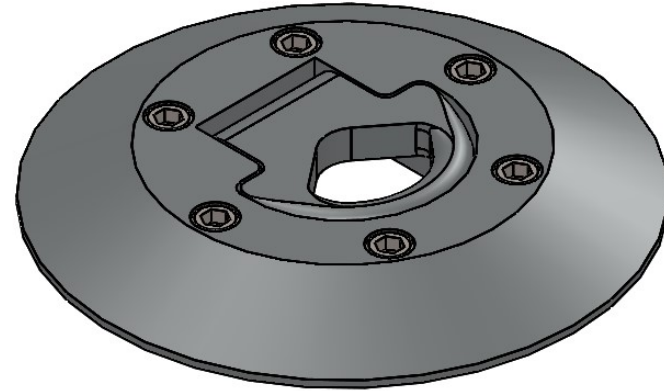
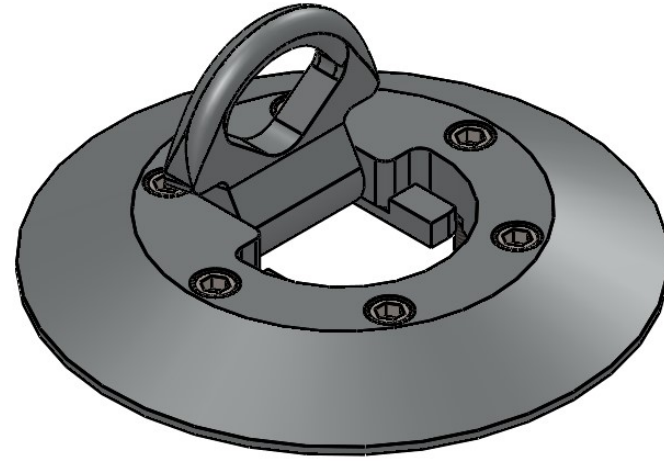
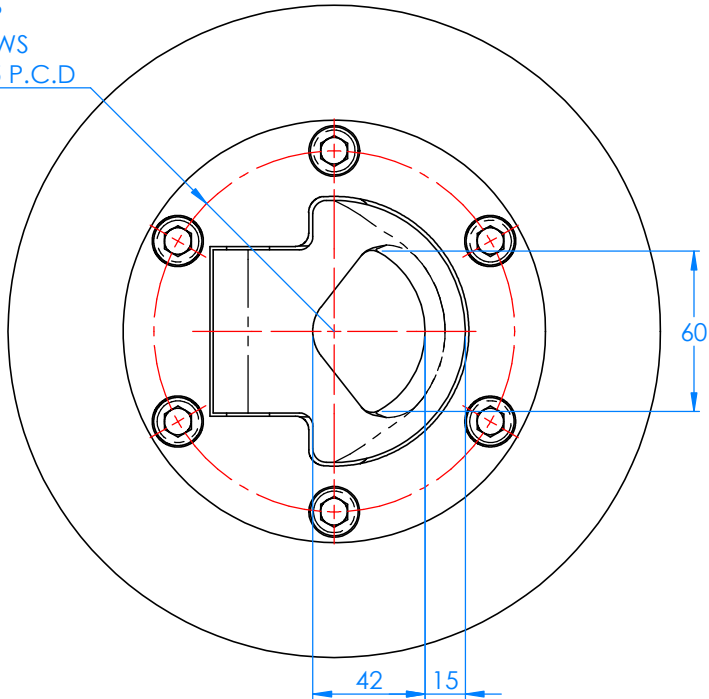



6 X M12 X 1.75P
CAP HEAD SCREWS
EQUI SPACED ON 135 P.C.D



27275

C	\$39178 - PITCH CORRECTED	01/09/2023	S.P.J
B	\$29985 - DRAWN ONTO SOLIDWORKS	17/09/2019	M.J.I
REV.	DESCRIPTION	DATE	APPROVED

CRITICAL DIMENSIONS MARKED THUS: 
REFERENCE DETAILS MARKED THUS: ()

Matl. Part No. -
Matl. Type -
Matl. Size -
Finish - -
Estimated Weight - 6.21 KG

GENERAL TOLERANCES unless otherwise stated

Dimension - No decimal place ±1
Dimension - One decimal place ±0.5
Dimension - Two decimal places ±0.15
Angular Dimension ±1°
Weld Bead Length ±5
Surface Flatness (inc. weld) ±0.5

MONITOR MARINE INTERNATIONAL
B. Hepworth & Co. Ltd
3-5 Merse Road,
North Moons Moat,
Redditch B98 9HL
Tel: +44 (0)1527 61243
www.b-hepworth.com

Date	Drawn by	Approved by	Drawing Log No.
17/12/2014	J.R.C	M.J.I	S29985
SURFACE MOUNT HELICOPTER TIE DOWN			
Size	Scale	Sheet	ISSUE No.
A3	1:2	1 of 1	

B. Hepworth & Co. Ltd., (the 'Owner') holds intellectual property rights in the article shown. This drawing and the article may not be copied in any form without prior written permission of the owner. ©B. Hepworth & Co. Ltd., 2023

3RD ANGLE 

DO NOT SCALE IF IN DOUBT ASK O/D - OUTSIDE DIM. I/D - INSIDE DIM. OUTSIDE LOOKING IN

All dimensions are in mm unless otherwise stated

REMOVE ALL BURRS & SHARP EDGES

27275 C