

Hepworth Newsletter September 2021

"A business that makes nothing but money is a poor business".

- Henry Ford

-
1. Hepworth Marine
 2. Michael Ollis Ferry
 3. Croatia Yachts
 4. Observator Vision Netherlands Exhibition
 5. RAstar 3200 Hin Lee Shipyards
 6. Manxman Isle of Man Ferry
 7. 140ft Wooden Yacht
 8. Nautic Solutions Brazil Site Expansion
 9. Monitor Marine 15025 Vertical Hatch Handle
-

1. Hepworth Marine

Hepworth Marine have received 43 newbuild projects for September and we are carrying on with production at full force.



HEPWORTH MARINE

2. Michael Ollis Ferry

Eastern Shipbuilding Group (ESG) has delivered the first of three new 320'x70'x21'6" Ollis-class ferries to the New York City Department of Transportation (NYCDOT) Staten Island Ferry Division.



New York City has operated Staten Island Ferry since 1905. The ferries, which run 24/7 on a 5.2-mile route between St. George Terminal on the north shore of

Staten Island and Whitehall Terminal in Lower Manhattan, carry close to 23 million passengers annually.

On board are 14 of our wipers with the 8000 control system supplied by our USA supplier [Inmar Systems](#).

3. Croatia Yachts

Scenic Eclipse II

AB Marine, our supplier in Croatia, have received an order from MKM Yachts, member of SCENIC Group, for Type D Straight Line wipers and the 8000 series control system. It will be installed on the highest class polar cruiser Scenic Eclipse II which is under construction in SY 3 MAJ Croatia.

Hondius

Type C Straight Line wipers with the 6000 Series controller are being delivered for a new Polar Cruiser in SY Brodosplit. This is the same order as has previously been delivered for the Hondius explorer vessel.



Last year a set of 17 Type C wipers was delivered with the 8000 Series controller for a Polar Cruiser built in SY Brodosplit for Quark Expeditions.



4. Observator Vision Netherlands Exhibition

Observator Vision contributes to sustainable ferries

Commissioned by [Holland Ship Electric](#), [Observator Vision](#) provides two zero-emissions battery powered ferries with straight line window wiper systems. The ships are designed by Wärtsilä. Client / operator of the vessels: Norwegian operator Boreal Sjø. Construction by Holland Shipyards, in the Netherlands (Vlissingen and Hardinxveld-Giessendam).



[Observator](#) also installed installed sunscreens and wipers on board the Sandoy, the first fully electric ferry for Brevik Fergeselskap. The Sandoy will operate within the waters of the Eidangerfjorden, connecting Brevik with Sandoya and Bjorkoya.

[Observator](#) Sustainable Ferries:
<https://observator.com/news/ferries-fitted-with-sunscreens-and-window-wipers-by-observator-vision/>

Europort Exhibition

With the Europort exhibition (Rotterdam Ahoy) on the horizon, it promises to be a beautiful autumn in the Netherlands!



This year, Observator Vision can again be found in hall 1, at the Holland Pavilion of the NMT (Netherlands Maritime Technology). Manager Bram Bezemer is busy with the preparations, including the decoration of the stand (1213).

Do you want to visit the event? You can register via: <https://lnkd.in/eUJDRsNs>

Or check out Observator's website for more information: <https://lnkd.in/ekEDyhYW>

5. RAsstar 3200 Hin Lee Shipyards

RAsstar 3200-CL tug COLOSO I has been delivered to Hin Lee Shipyards with sets of our Type D Straight Line Wipers, and will be heading to Chile.



Technical Specifications:

Length Overall LOA: 32.0m

Breadth: 12.8m

Speed: 13.0 knots

Bollard Pull: 80 tons

6. Manxman Isle of Man Ferry

Our supplier in South Korea Sangmyung have been proceeding with the project Isle of Man Steam Packet during last year and this year with B-hepworth.

The ship is a Ro-Pax vessel for the carriage of 1000 passengers, cars, vans, driver accompanied trailers, and unaccompanied commercial drop trailers on short international voyages, building at Hyundai Mipo Dockyard(HMD) in South Korea. The vessel name has been decided to be Manxman.



In August 2021, Kick Off Meeting and Steel Cutting Ceremony took place ahead of the commencement of Manxman's construction at HMD Head Office in South Korea with all representatives were in attendance.

Finally, HMD and B-Hepworth signed a contract in July for the type C straight wipers for Wheel House and SRtP, and onboarded at the end of September, and will be arrived at Busan Korea in November.

7. 140ft Wooden Yacht

Our suppliers in China and Hong Kong [Foilborne](#), have provided wipers for this 140ft wooden yacht, built by Hong Kong's traditional local shipyard. The luxury yacht uses five WYNN Type C wipers with Series 1000 control system. In order to maintain the integrity of the ship's appearance, the shipyard cleverly hides the wiper behind the front bulkhead and the wiper arm is sprayed black to go with the overall luxury aesthetic.



Elegant Wooden Yacht



Type C Straight Line Wiper

8. Nautique Solutions Brazil Site Expansion

One of our suppliers Nautique Solutions have recently expanded their site in Rio de Janeiro Brazil downtown. They now have around 400m² dedicated only to warehouse and more than 9000 SKU in stock.

You can see more on their website here:

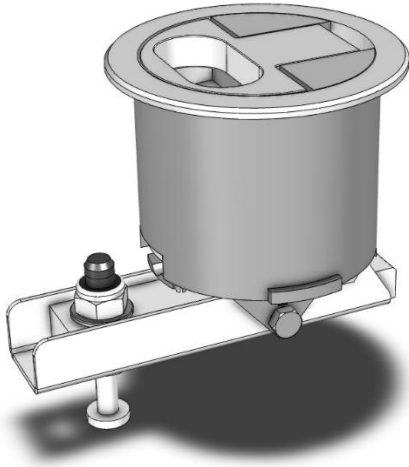
<http://www.nautiquesolutions.com/en/home-en/>

9. Monitor Marine 15025 Vertical Hatch Handle

The Monitor Marine 15025 Vertical hatch handle offers positive locking as well as seal compression for the most challenging applications. It was designed for the larger hatches used by a leading UK RIB manufacturer because at high speeds conventional compression latches are no longer an option.



Monitor's Vertical handles resist scrubbing of the hatch seals, instead drawing the lid closed and positively dogging the hatch lid in place. Its flush surface means it does not intrude into valuable cockpit space, and the integrated lock ensures security both at sea and at the dock.



Contact Us:

Hepworth Group
4 Merse Road, North Moons Moat.
Redditch, Worcestershire, B98 9HL,
United Kingdom
Phone: 01527 61243
Email: enquiries@b-hepworth.com

Marine www.b-hepworth.co.uk

Rail www.hepworthrail.co.uk

Monitor Marine www.b-hepworth.co.uk/monitor-marine

Fabrication www.hepworthfabrications.co.uk

Follow us on LinkedIn for the latest news and exclusive content:



<https://www.linkedin.com/company/b-hepworth-&-company-limited/posts/?feedView=all&viewAsMember=true>