

Newsletter April 2021

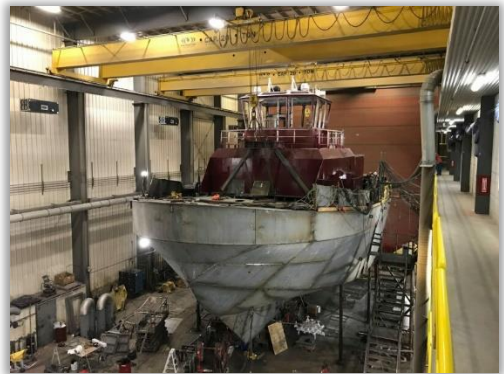
“Whenever you see a successful business, someone once made a courageous decision”.
-Peter F. Drucker

1. Dorothy Day
 2. Wyatt Moran
 3. C.D. White
 4. FRC Glen Harris
 5. Mv Rusty Moore
 6. Monitor Marine
 7. Fabrications
 8. Rail
-

Dorothy Day

The third new ferry being built for the New York City Department of Transportation was recently launched at the Eastern Shipbuilding Group’s Allanton facility in Panama City, Florida.

The vessel is part of a \$300 million investment to bring larger and more state-of-the-art ferries into service connecting Staten Island to lower Manhattan.



The Wyatt Moran is equipped with 4 of our Wynn Type 1850 external pantograph units, provided by [Inmar Systems](#).

C.D. White

The sister vessel, the C.D. White, was delivered in January 2020. The two vessels are examples of the trend toward higher horsepower, more compact tugs.



Our United States supplier [Inmar Systems](#) have supplied 14 of our 70Nm Pantograph wipers with the 8000 series controller.

Wyatt Moran

Tugs, such as the Wyatt Moran under construction at Washburn & Doughty Associates, have put up consistently big numbers in Work Boat magazine’s annual Construction Survey for more than 20 years.



Both of these vessels are a great example of the modernisation and technological advances that are occurring in the tug building industry.

On board are 4 of our bespoke Sea Horse wipers provided by [Inmar Systems](#).

FRC Glen Harris

Bollinger Shipyards LLC has delivered the fast response cutter (FRC) Glen Harris to the U.S. Coast Guard in Key West, Fla.



This is the 167th vessel Bollinger has delivered to the Coast Guard over a 35-year period and the 44th FRC delivered under the current program. Glen Harris is the third of six cutters destined for overseas operations in Manama, Bahrain.

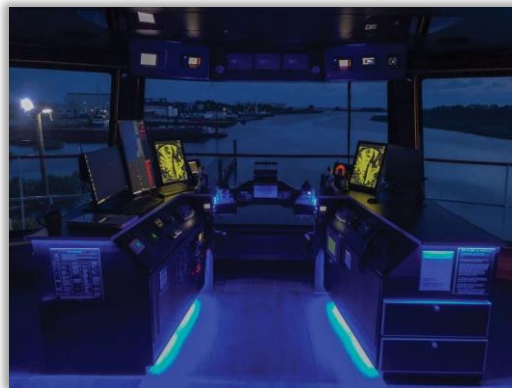
For this vessel [Inmar Systems](#) provided a one-off Triple Type C Wynn Straight Line wiper and two Twin Type C Straight Line wipers.

Mv Rusty Moore

The boat, built by Master Boat Builders on a triple-screw design from Sterling Marine, was delivered in August.



The mv. Rusty Moore is a 2,400 hp., open-wheel, triple-screw towboat that measures 94 by 34 by 10.75 feet. The hull models our 2,800 hp. class boats and uses the same rudders and tail shafts, reducing the need for spares.



A single Type D wiper with a 1000 series controller have been provided by [Inmar Systems](#).

Monitor Marine

A refit project on a well-known 57m yacht has just incorporated Monitor Marine's 2082 fittings into their lightweight helideck extension.



While preserving the vessel's classic "look" was critical, lightness was just as important because the new helideck is nearly three stories above sea-level.

The refit incorporated a set of 8 rectangular tie-down fittings into the 8mm alloy deck with the aid of specially made deck receivers. This installation solution is strong enough for a single fitting to support the weight of the entire helicopter.

Fabrications

This month Hepworth Fabrications have been delivering a series of new Panel Assemblies for one of our Rail clients.

The Assemblies required reverse engineering in parts and have been an interesting project for the whole team to work on. Which has now been delivered, ahead of schedule.

Rail

The Rail team have been winning new deals, while contributing to supporting dispatch, and dealing with the high demand.



We are currently prepping for IRIS re-certification. B.Hepworth has been the first LRQA approved UK company to achieve the coveted IRIS2 accreditation.



If the September exhibitions are to go ahead in September as planned, the rail team will be ready to attend Rail Tech and TRAKO.

Contact Us:

Hepworth Group
4 Merse Road, North Moons Moat,
Redditch, Worcestershire, B98 9HL
United Kingdom
Phone: 01527 61243
Email general.web@b-hepworth.com



Wipers www.b-hepworth.com

Fabrications www.hepworthfabrications.co.uk

Follow our **LinkedIn** for the latest news and exclusive content.

<https://www.linkedin.com/company/b-hepworth-&-company-limited/?viewAsMember=true>