



THE ULTIMATE IN MARINE HARDWARE



PRODUCT GUIDE 2017

INDEX

Multi-Purpose Plug-in Connectors	4
50mm Finger Pull / SnapShut Latches	6
50mm Compression Hatch Handle	6
70mm SnapShut Latches	7
70mm StayPut Latch	8
70mm Finger Pull / Mini Pad Eye	8
80mm Hatch Handles	9
80mm Vertical Hatch Handles	10
100mm Hatch Handles	11
Hatch Handle with Rear Shootpin	12
70 & 100mm Deck Drains	13
100mm Bayonet Deck Filler System	14
100mm System 5 Deck Fillers	15
Retractable Cleats	16
Pull-Up Cleats	17
4-Bar Hinge	18
Helicopter Tie-Downs	19
Maintenance Kit	23



INTRODUCTION

Over the last 30 years Monitor Marine International has developed a range of precision engineered, high quality interior fittings, deckware, tender attachments and helipad tie-downs for SuperYacht and quality volume boat builders. Monitor operates under the Hepworth Marine International division based in the West Midlands, UK. Hepworth International is the Worldwide leader in Marine Wiper Systems.



All the products are designed, engineered and manufactured in the UK from marine grades of stainless steel and aluminium, produced under ISO 9001/2008 quality standards and with a number of products carrying Load Test results.



The product range includes SnapShuts, a Mini Pad Eye, Compression and Crew Cabin Hatch Handles, Releases and Hatch Hinges, and for on deck there is a range of Deck Filler options, Deck Drains and Cleats. There are also 1 tonne and 3 tonne SWL Plug-in Connectors available.

The unique range of Helicopter tie-downs includes 6 versions suitable for use with all types and sizes of aircraft. They can be installed on most composite, wood, GRP, steel or aluminium decks and helipads. The latest addition to the range is the Surface Mount model for adding to most types of existing decks or for ground installations.

All our products are backed up by an engineering team and we can offer a wide range of specialist services, including marine fabrications and a design facility for either new build or re-fits.

Please contact us by calling 0044 (0)1527 61243, via email: mmi@b-hepworth.com, or visit our website: www.monitor-marine.co.uk for further information and installation drawings.

Most products are available in a range of finishes including:

MP MIRROR POLISH

A superb high quality mirror polish finish is accomplished by hand finishing external surfaces.

SY SUPERYACHT POLISH

A superb high quality mirror polish finish is accomplished by hand finishing to ALL VISIBLE surfaces.

The two finishes above are indicated by the symbols shown located next to each Part Number.

‘SATIN’ and POWDER COATED finishes can be supplied on request. Please contact us for more information.



Perfect for many applications including use as lift points for tenders and toys, as well as stanchions, awning and guard rail anchor points.



1 TONNE CONNECTOR WITH STRAIGHT AWNING/STANCHION PROBE (SWL = 1 TONNE)

MP Part no. 2165-1T-ST Weight: 585g approx.
Probe only: **MP** Part no. 27245-1T-ST

1 TONNE CONNECTOR WITH JOINTED AWNING PROBE (SWL = 1 TONNE)

MP Part no. 2165-1T-JT Weight: 670g approx.
Probe only: **MP** Part no. 27245-1T-JT



180° smooth
angle of arc

Suitable for:

- Support couplings for Awnings / Biminis / Canopies
- Anchor points for ladders and stanchions
- Lift points for Toys and Tenders

*Other probe designs
available - please contact
us for more information.*

www.monitor-marine.co.uk

MULTI-PURPOSE PLUG-IN CONNECTOR

1 TONNE SWL, FACTOR OF SAFETY 5:1

3 TONNE SWL, FACTOR OF SAFETY 5:1

- Probe supplied with shackle fitting (standard)
- Unobtrusive, flush fitting, watertight and easy to use
- Suitable for use with toys and tenders, or for stanchions, guard rails, awnings, biminis etc.
- Quick attachment and release mechanism
- 316 and 17-4ph stainless steel
- Flush fitting, watertight
- Alternative probe ends available
- Option to be fitted with auxiliary attachment to enable distribution of part load to the hull (3 tonne version only)
- Test reports can be supplied if required

MULTI-PURPOSE PLUG-IN CONNECTOR

Shown with probe and shackle fitting

Dimensions	Part No:	2165-1T	2165-3T	2181-3T
Flange diameter		35mm	60mm	60mm
Deck opening		30mm	52mm	52mm
Height of probe centre above deck		40mm	68mm	68mm
Depth below deck		80mm	111mm	141mm

1 tonne model

MP Part no. 2165-1T Weight: 395g approx. (ex-shackle)
460g approx. (inc. shackle)

3 tonne model

MP Part no. 2165-3T Weight: 1.7kg approx. (ex-shackle)
1.9kg approx. (inc. shackle)

Versions for areas with no under-deck installation access:

1 tonne model

3 tonne model

MP Part no. 2175-1T

MP Part no. 2175-3T

Further information is available upon request.

MULTI-PURPOSE PLUG-IN CONNECTOR WITH AUXILIARY ATTACHMENT FOR ADDITIONAL SUPPORT

3 tonne model:

MP Part no. 2181-3T Weight: 1.7kg approx. (ex-shackle)

For installation drawings please contact us
or visit our website.

www.monitor-marine.co.uk

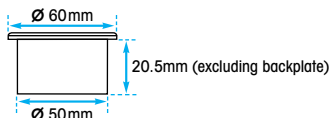


50MM FINGER PULL HANDLE

MP Part no. 8350

SY Part no. 8350-SY Weight: 260g approx.

- 60mm flange diameter, 50mm body diameter
- Handle accommodates lift with two fingers
- Flush fitting, 316 stainless steel
- Complete with backplate



50MM SNAPSHOT LATCH

20.5MM CATCH DEPTH Weight: 280g approx.

MP Part no. 8950

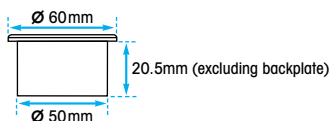
SY Part no. 8950-SY

32MM DEEP CATCH DEPTH Weight: 290g approx.

MP Part no. 8950-DC

SY Part no. 8950-DC-SY

- 60mm flange diameter, 50mm body diameter, complete with backplate
- Secure non-locking spring-loaded catch
- Flush fitting, 316 stainless steel
- Logo can be included

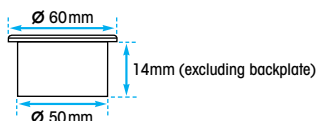


50MM COMPRESSION HATCH HANDLE (SHORT AND LONG BEAM VERSIONS)

MP Part no. 8450-CMP-SB Weight: 300g approx.

MP Part no. 8450-CMP-LB

- Flush fitting, 316 stainless steel
- Logo can be included
- Simple adjustment, pre-set compression
- Grip range - 8mm to 100mm
- Reach - 26mm to 89mm



Picture shows
Long Beam
version.

Part no.
8450-CMP-LB

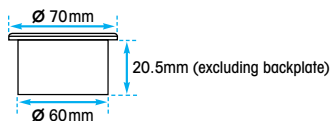


70MM SNAPSHOT LATCH (20.5MM CATCH DEPTH)

MP Part no. 8925

SY Part no. 8925-SY Weight: 450g approx.

- 70mm slam shut latch complete with backplate
- Secure non-locking spring-loaded catch
- Flush fitting, 316 stainless steel
- Logo can be included

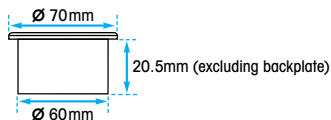


70MM SNAPSHOT LATCH (DEEP CATCH, 32MM CATCH DEPTH)

MP Part no. 8925-DC

SY Part no. 8925-DC-SY Weight: 465g approx.

- 70mm slam shut latch with deeper catch depth, complete with backplate
- Secure non-locking spring-loaded catch
- Flush fitting, 316 stainless steel
- Logo can be included



70MM SNAPSHOT LATCH (INTEGRAL HEX LOCK, DEEP CATCH OPTION)

Standard

Deep Catch

MP Part no. EL8925

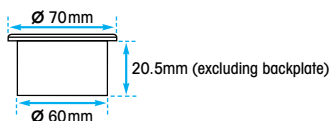
EL8925-DC

SY Part no. EL8925-SY

EL8925-DC-SY

Weight: 450g approx. 475g approx.

- 70mm slam shut latch with integral hex key lock, backplate and hex key
- Available with Deep Catch option
- Positive click-click action
- Flush fitting, 316 stainless steel
- Logo can be included



Deep catch

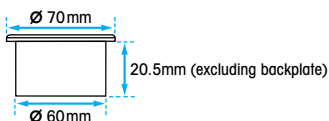


70MM STAYPUT LATCH (20.5MM CATCH DEPTH)

MP Part no. 15206

SY Part no. 15206-SY Weight: 435g approx.

- 70mm outer diameter shoot bolt latch
- Flush fitting, 316 stainless steel
- Complete with backplate

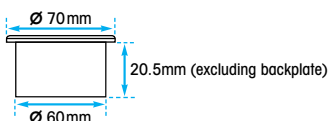


70MM FINGER PULL HANDLE

MP Part no. 8385

SY Part no. 8385-SY Weight: 430g approx.

- 70mm outer diameter
- Handle accommodates lift with two fingers
- Flush fitting, 316 stainless steel
- Complete with backplate



Rope
version

70MM MINI PAD EYE (ROPE OR STRAP/WEBBING VERSION)

Rope:

MP Part no. 11619

SY Part no. 11619-SY

Weight: 415g approx.

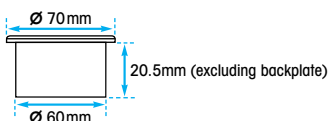
Strap / Webbing:

MP Part no. 11619-STRAP

SY Part no. 11619-STRAP-SY

SWL: 400kg

- 70mm outer diameter
- 316 stainless steel with 17-4ph eye
- Flush folding when not in use
- Suitable for securing jet bikes, small tenders / ribs, life rafts and inflatables



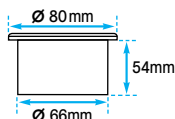
Strap
version

80MM HATCH HANDLE

MP Part no. 15022

SY Part no. 15022-SY Weight: 1.1kg approx.

- Clamping 1/4 turn with secure key locking
- Cam operated locking mechanism
- Watertight
- Flush fitting, 316 stainless steel



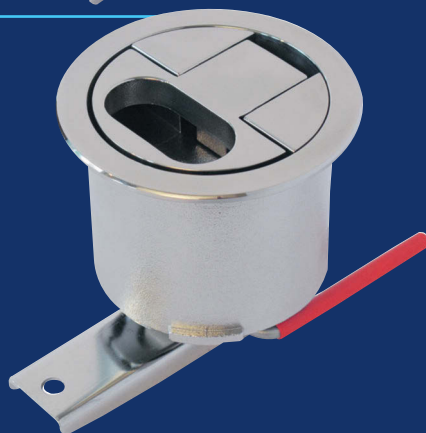
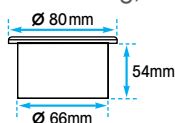
80MM HATCH HANDLE

(EMERGENCY RELEASE)

MP Part no. 15022-E

SY Part no. 15022-E-SY Weight: 1.1kg approx.

- Clamping 1/4 turn with secure key locking
- Internal emergency release pin
- Cam operated locking mechanism
- Watertight
- Flush fitting, 316 stainless steel



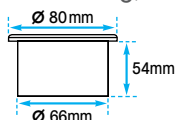
80MM HATCH HANDLE

(CREW CABIN, EMERGENCY RELEASE)

MP Part no. 15022-CC

SY Part no. 15022-CC-SY Weight: 1.35kg approx.

- External key locking 1/4 turn with internal release for Crew Cabin installation
- Cam operated locking mechanism
- Watertight
- Flush fitting, 316 stainless steel



For installation drawings please contact us or visit our website.

**VIBRATION
PROOF!**



**VIBRATION
PROOF!**



For installation drawings
please contact us or
visit our website.

80MM VERTICAL HATCH HANDLE (BEAM 65MM FROM CENTRE)

MP Part no. 15025

SY Part no. 15025-SY Weight: 1.1kg approx.

- Vertical installation, clamping 1/4 turn
- **Vibration proof** - ideal for cockpit lockers and high speed ribs
- Secure key locking, watertight
- Cam operated locking mechanism
- Flush fitting, 316 stainless steel

80MM VERTICAL HATCH HANDLE (LONG BEAM, 100MM FROM CENTRE)

MP Part no. 15025-L

SY Part no. 15025-L-SY Weight: 1.13kg approx.

- Vertical installation, clamping and key locking
- 1/4 turn with longer length cramping beam
- **Vibration proof** - ideal for high speed ribs
- Cam operated locking mechanism, watertight
- Flush fitting, 316 stainless steel

80MM HATCH HANDLE (FLUSH TOP, LOCKABLE WITH KEY/HEX KEY)

Flush Top with Key

with Hex Key

MP Part no. 2114-F

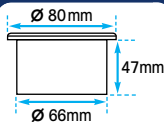
2114-F-HK

SY Part no. 2114-F-SY

2114-F-HK-SY

Weight: 900g approx.

- Clamping 1/4 turn
- Secure key locking
- Cam operated locking mechanism
- Flush fitting, 316 stainless steel
- Watertight



Dimensions as
above for
all products
on this page



With
Hex Key

Visual top face
comparison of
the 80mm
Hatch Handle
models.

P/no. 15022 & 15025

P/no. 2114-F

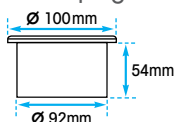


100MM HATCH HANDLE (FLUSH TOP)

MP Part no. 2115-F

SY Part no. 2115-F-SY Weight: 1.18kg approx.

- Ideal for larger hatches and thicker panels
- Clamping and locking 1/4 turn
- Cam operated locking mechanism
- Watertight, flush fitting, 316 stainless steel
- Cramping beam can be customised

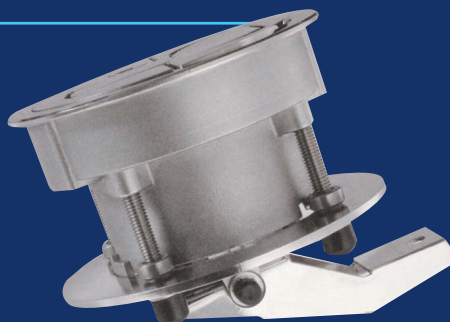
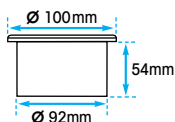


100MM HATCH HANDLE (DEEP REACH)

MP Part no. 2115-F-DR

SY Part no. 2115-F-DR-SY Weight: 1.18kg approx.

As above but with a deeper reach cramping beam, which can be customised.

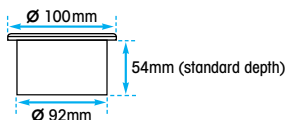


100MM HATCH HANDLE (CREW CABIN)

MP Part no. 2115-F-CC

SY Part no. 2115-F-CC-SY Weight: 1.53kg approx.

- External locking 1/4 turn with internal release for Crew Cabin installation
- Watertight, flush fitting, 316 stainless steel
- Easily customised to fit thicker door panels



This model can easily be customised for very thick panels.

Image to right shows a customised handle.

100MM HATCH HANDLE WITH REAR SHOOTPIN UNIT

MP Part no. 2115-F-RS-100

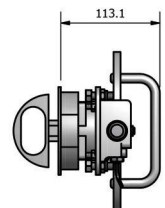
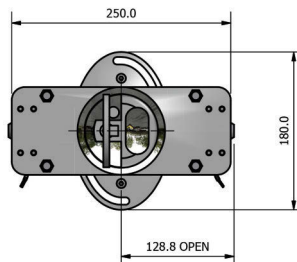
SY Part no. 2115-F-RS-100-SY

Weight: dependent upon length and type of shootpin.

- Ideal for larger doors and hatches
- 316 stainless steel, watertight
- 100mm flush fitting 1/4 turn hatch handle to front
- Finger shutter plate to finger pull
- Shootpin unit to rear

Available options:

- Handle for rear operation
- 120v reed switch position sensor
- Customised shootpin length to suit installation
- Key locking / hex key lock, or lock blank



70 & 100MM DECK DRAINS

These Deck Drains feature unique removable grilles for ease of fitting and enables access to clear any debris to avoid blockages.



70MM DECK DRAIN (ACETAL SLEEVE)

- 316 stainless steel grille and acetal sleeve
- Flush to deck fitting
- Acetal sleeve accepts 38mm and 50mm hoses

MP Part no. D21910 Weight: 290g approx.

Dimensions: Depth : 74mm
Hole diameter required : 50mm

100MM DECK DRAIN (ACETAL SLEEVE)

- 316 stainless steel grille and acetal sleeve
- Flush to deck fitting
- Acetal sleeve accepts 38mm, 50mm and 63mm hoses
- Offers a more economic, lighter weight alternative to our standard Deck Drain (9300)

MP Part no. D21908 Weight: 370g approx.

Dimensions: Depth : 140mm
Hole diameter required : 70mm

100MM DECK DRAIN

- 316 stainless steel sleeve and grille
- Barrel takes a 50mm diameter hose allowing quick clearance of excess water

MP Part no. 9300 Weight: 885g approx.

Dimensions: Depth : 101.7mm
Hole diameter required : 70mm

Logos can be incorporated into grilles - please contact us for further information.



Please note: any text can be engraved, including logos.
Contact us for further information.

100MM BAYONET DECK FILLER SYSTEM

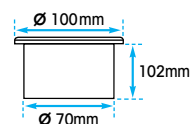
- Bayonet twist-action with 'pop-up' cap
- Double sealed, secure key locking
- Flush to deck with no visible fixings when closed
- Eliminates problems associated with threaded fillers
- Alternative engraving available
- All supplied with deck fitting as per Petrol image
- Manufactured to CE requirements

100MM BAYONET DECK FILLER SYSTEM (DIESEL)

MP Part no. D11621

SY Part no. D11621-SY

Weight: 1.53kg approx.

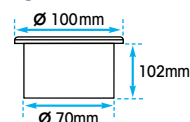


100MM BAYONET DECK FILLER SYSTEM (PETROL)

MP Part no. P11621

SY Part no. P11621-SY

Weight: 1.53kg approx.

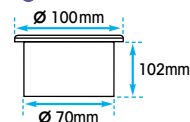


100MM BAYONET DECK FILLER SYSTEM (WATER)

MP Part no. W11621

SY Part no. W11621-SY

Weight: 1.53kg approx.



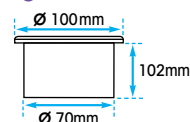
100MM BAYONET DECK FILLER SYSTEM (WASTE)

- Supplied with international pumpout adaptor

MP Part no. WS11621

SY Part no. WS11621-SY

Weight: 1.6kg approx.



100MM SYSTEM 5 DECK FILLERS

- Unlatches and opens in one smooth movement
- Totally watertight lid, cannot be lost overboard
- Flush top, secure key locking, hinged lid
- When key locked, the handle is disconnected
- 316 stainless steel and black acetal sleeve construction
- Acetal sleeve accepts 38mm, 50mm and 63mm hoses
- Manufactured to CE requirements

SYSTEM 5 DECK FILLER (DIESEL)

MP Part no. 2101-D Weight: 646g approx.

Dimensions: Depth : 140mm approx.
Hole diameter required : 70mm

SYSTEM 5 DECK FILLER (PETROL)

MP Part no. 2101-P Weight: 646g approx.

Dimensions: Depth : 140mm approx.
Hole diameter required : 70mm

SYSTEM 5 DECK FILLER (WATER)

MP Part no. 2101-W Weight: 646g approx.

Dimensions: Depth : 140mm approx.
Hole diameter required : 70mm

SYSTEM 5 DECK FILLER (WASTE)

- Flush top hinged lid - cannot be lost overboard
- Pumpout conforms to ISO 8099:2000

MP Part no. 2101-WS Weight: 675g approx.

Dimensions: Depth : 140mm approx.
Hole diameter required : 70mm

For installation drawings please contact us
or visit our website.

*Lid cannot be
lost overboard!*

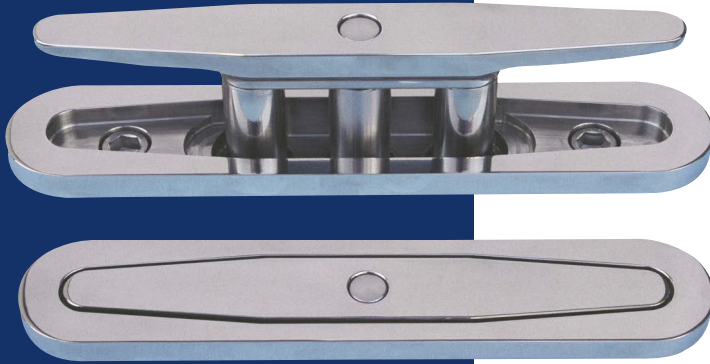
*Secure hinged
lid, totally
watertight.*



*Please note: any text
can be engraved,
including logos.
Contact us for
further information.*

RETRACTABLE CLEATS

(LENGTH: 200 / 300 / 400MM)



A range of manual and power operated Flush Fitting Automatic Retractable Cleats has been developed. The cleat has two positions, stowed and raised ready for use. In the stowed position the entire cleat and base is flush with the deck.

The manual cleat is provided with a control button in the centre of the cross bar. To make the cleat ready for use the control button is

depressed. This releases the cleat lock and allows the internal gas struts to drive the cleat top into the ready for use position. The cleat rises at a controlled speed and is locked at the top of its stroke.

The cleat is stowed by pressing the control button and simultaneously pressing the cleat top down. The button can be released once the cleat top has started to descend. The cleat top will automatically lock when the cleat top reaches the stowed position.

The powered electric/hydraulic cleats have the same physical appearance to the manual unit and can be both locally and remotely operated and controlled from the bridge by the use of control panel switchgear. The system can be configured so that the bridge control can inhibit local control.

The cleat is provided with a force sensing system that will prevent personnel injury by trapment.

Weight: 7.3kg approx. for 300mm length version.

- 316 stainless steel, flush fitting when closed
- Lifts when centre button is pressed: gas struts lift the crossbar until it locks in place ready for use
- To retract, press button & push down until locked



All Cleats are available in three lengths: 200mm, 300mm and 400mm long. When ordering, simply change the second part of the order code for the length you require.

Manual Cleat

MP Part no. 9450-**200** (200mm long version)

MP Part no. 9450-**300** (300mm long version)

MP Part no. 9450-**400** (400mm long version)

BRIDGE CONTROL MODELS

Powered Electric Cleat

MP Part no. 9450-EL-**200**

MP Part no. 9450-EL-**300**

MP Part no. 9450-EL-**400**

Powered Hydraulic Cleat

MP Part no. 9450-HYD-**200**

MP Part no. 9450-HYD-**300**

MP Part no. 9450-HYD-**400**

LOW PROFILE PULL-UP CLEATS

A range of high quality mirror polished marine grade 316/17-4 stainless steel, low profile pull-up cleats. Requiring very little under-deck space these cleats need no drainage as they are completely watertight with sliding pistons. Easy to install and simple to operate with one hand, they can be supplied with top face logo or insignia.

- Base plate can be recessed into deck
- Easy-lift streamlined design prevents snagging - no sharp edges

Cleats are available in the following range of sizes:

320mm

Height above deck if base plate recessed: 22mm

SY Part no. 9500-320-SY

Weight: 3.8kg approx.

MWL: 7,000kg

240mm

Height above deck if base plate recessed: 16mm

SY Part no. 9500-240-SY

Weight: 1.8kg approx.

MWL: 6,000kg

180mm

Height above deck if base plate recessed: 15mm

SY Part no. 9500-180-SY

Weight: 905g approx.

MWL: 3,000kg

120mm

Height above deck if base plate recessed: 9mm

SY Part no. 9500-120-SY

Weight: 290g approx.

MWL: 2,000kg



For installation drawings please contact us or visit our website.

ALL 4-BAR HINGES
ARE CUSTOM MADE
TO ORDER.

PLEASE CONTACT US
WITH YOUR REQUIREMENTS.

CUSTOM 4-BAR HINGE WITH GAS STRUT

Ideal for large SuperYacht doors, hatches and garages.

- 316 stainless steel
- Actual size of hinge plates and closure fixing can be defined for a specific project
- 4-bar mechanism lowers hatch squarely onto its seat ensuring a positive seal
- Optional integrated gas strut

MP Part no. 9400 Weight: 4.27kg approx.
(base length 200mm)



HELICOPTER TIE-DOWNS

Our unique range of helicopter tie-downs has been developed from a military requirement for securing helicopters on warships at sea. The civil versions offer similar performance but in configurations and materials specifically aimed at SuperYachts, commercial vessels, supply ships and drilling rigs etc.

There are six versions within the range, offering Safe Working Loads up to 4 tonnes - see table below. All tie-downs can be installed to all types of deck structures and ground applications (*please contact our design engineers for further information*).

Mill certificates are supplied with all tie-downs. Test reports can be supplied on all tie-downs if required.

There is a minimum order requirement of 4 units. Engineering support is available to customise installation requirements, including a design facility for new builds and re-fits.

HELICOPTER TIE-DOWN SPECIFICATION TABLE

	T45C	T45R	4-Bar	Surface Mount
SWL*	39kN (4 tonnes)	39kN (4 tonnes)	17kN (1.75 tonnes)	39kN (4 tonnes)
Factor of Safety*	5:1	5:1	5:1	5:1
Max. Loading	20 tonnes	20 tonnes	8.75 tonnes	20 tonnes
Weight	8kg	5kg	2.5kg	5.86kg
Diameter	167mm	142mm	95mm	244mm

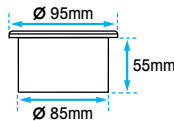
* Safe Working Load and Factor of Safety figures are calculated on a 45 degree line of pull.



4-BAR HELICOPTER TIE-DOWN

SY Part no. 7516-SY Weight: 2.5kg approx.

- The most compact tie-down of the range
- Suitable for securing helicopters to all types of helidecks and helipads (For securing jet bikes, small tenders / ribs, life rafts and inflatables, see Mini Pad Eye on p8.)
- Rotates through 360° for tie-down alignment
- Bolt-in format, flush fitting when not in use
- Includes integral drain
- Stud and drain lengths to suit application



DECK HOUSING FOR 4-BAR HELICOPTER TIE-DOWN

MP Part no. 21975 Weight: 7kg approx.

Dimensions: Diameter - 130mm, Depth - 145mm

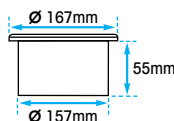
- 316 stainless steel - aluminium versions also available
- Supplied with acetal cup for steel or aluminium deck installation

(NB 4-Bar tie-down shown in illustration not included)

T45C HELICOPTER TIE-DOWN

MP Part no. 2037 Weight: 8kg approx.

- Non-rotating - designed for commercial applications
- Offers ease of use for ground crew wearing foul weather gear and fireproof gloves
- Fully serviceable, can be rebuilt in situ with only a few minutes down-time
- Suitable for 'weld-in' applications only



T45R HELICOPTER TIE-DOWN

The T45R has been designed to have all of the performance characteristics of the T45C but in a smaller package.

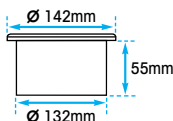
The eye in the T45R will revolve and allow alignment with the aircraft's position on the deck. This allows a lower number of tie-downs to be fitted to a heli-pad. It also provides flexibility allowing a large range of aircraft types to be accommodated.

This unit is available in both 'bolt-in' and 'weld-in' formats, with options for aluminium decks and installations with no under deck access.

- Rotates through 360° tracking direction of load
- Flush to deck when not in use
- Bolt-in versions: studs to suit application

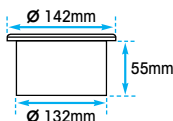
T45R (WELD-IN) HELICOPTER TIE-DOWN

MP Part no. 2079 Weight: 5kg approx.



T45R (BOLT-IN) HELICOPTER TIE-DOWN

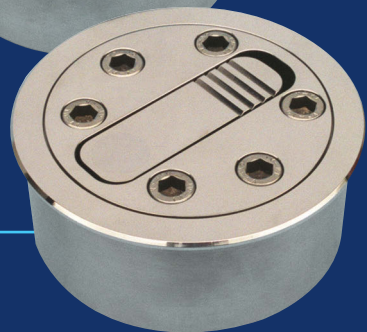
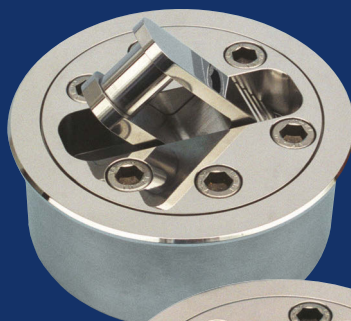
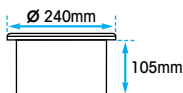
MP Part no. 2080 Weight: 5kg approx.



T45R (BOLT-IN) HELICOPTER TIE-DOWN COMPLETE WITH ALUMINIUM WELD-IN DECK CUP AND INSULATOR (SHOWN)

- For aluminium deck installations

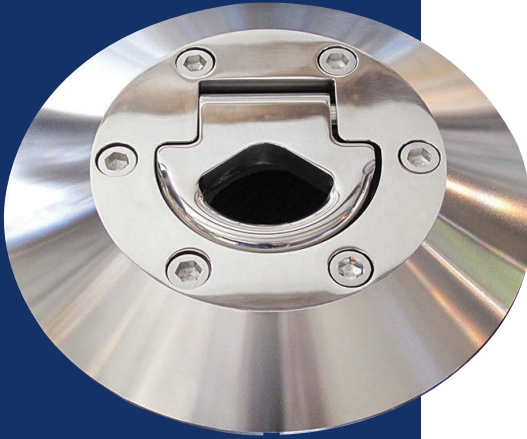
MP Part no. 2172 Weight: 12.8kg approx.



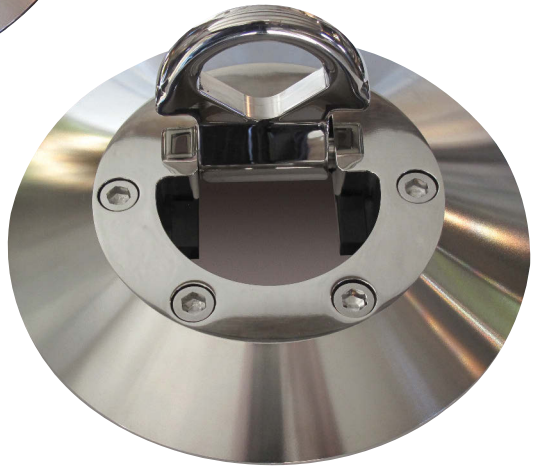
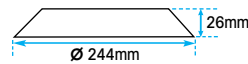
SURFACE MOUNT HELICOPTER TIE-DOWN

MP Part no. 27275

Weight: 5.86kg approx.



- 316 and 17-4ph stainless steel
- Install directly on the deck or ground by drilling and tapping holes for 6 x M12 bolts
- 26mm high with ramped edges for smooth roll-over by aircraft wheels
- Ideal for re-fits and retro installations



For installation drawings please contact us or visit our website.



MULTI-PURPOSE PLUG-IN CONNECTOR

The 3 tonne version can be used for helipads, helidecks and rotor blade tie-downs, as well as helipad guard rails and stanchions. Ideal for installations where there is restricted under-deck access.

Please see product listing on page 5 for further information.

www.monitor-marine.co.uk

MAINTENANCE KIT

Specifically intended for routine maintenance and general upkeep of all Monitor Marine lock types and deckware.

Part no. 1234MMK

- Instructions
- Salt-Away Spray -safely removes salt
- Corrosion X - kills rust and corrosion
- Super Stainless™ - removes rust staining, cleans and protects
- Silicone Grease - to seal & protect locks
- Micro Cloth, cotton buds and tissues
- White cotton gloves



COMMERCIAL FINISHES

Satin stainless steel or aluminium finishes are available and we also offer powder coated versions.

Please contact us with your requirements and technical specifications and we will quote accordingly.

Tel: 0044 (0)1527 61243

Email: mmi@b-hepworth.com

Website: www.monitor-marine.co.uk

BRITISH
DESIGNED

BRITISH
ENGINEERED

BRITISH
MANUFACTURED





showing the way...to quality



LEAVING OTHERS IN OUR WAKE



Monitor Marine International

4 Merse Road, North Moons Moat, Redditch
Worcestershire B98 9HL UK

T +44 (0)1527 61243

F +44 (0)1527 66836

E mmi@b-hepworth.com

www.monitor-marine.co.uk

**BRITISH
MARINE** 
LEADING THE INDUSTRY


SUPERYACHT UK